

## DECEMBER HOLIDAYS

**Christmas:** In the Christian faith, Christmas is the historical celebration of the birth of Jesus Christ. Whether celebrated for this religious reason or solely as a cultural celebration, Christmas traditions vary around the world. Americans celebrate with Christmas trees, visits from Santa Claus, and dreams of snowy landscapes.

**Hanukkah,** or Chanukah, is an eight-day Jewish celebration that commemorates the re-dedication of the Second Temple in Jerusalem following the Maccabean Revolt. Those who took part in the re-dedication witnessed what they believed to be a miracle. Even though there was only enough untainted oil to keep the menorah's candles burning for a single day, the flames continued to burn for eight nights.

**Kwanzaa** was created by Dr. Maulana Karenga in 1966 after the Watts riots in Los Angeles. He founded US, a cultural organization, and started to research African "first fruit" (harvest) celebrations. From there, he combined aspects of several different harvest celebrations to form the basis of Kwanzaa. The name Kwanzaa comes from the phrase "matunda ya kwanza" which means "first fruits" in Swahili.



### TRASH PICKUP

The Post Office has asked that we **NOT** place our trash and recycle bags against the mailbox posts. These bags should be at least five feet away on the driveway or lawn. Bulk trash items should be even farther away and not close to any trees or other objects that may interfere with the grabber arm used to pick up the bulk trash.

### IMPORTANT NOTICE

#### NEW MAINTENANCE PAYMENTS

Beginning January 1, 2022, our monthly maintenance payments will be:

- Single Family Home \$367
- Plexes \$340

If you have automatic payments through your bank, be sure to advise them of the increase. Automatic payments directly through our accountants, Juda Eskew & Associates, will be adjusted automatically.

Don't forget: Payments are due on the first day of each month. Thank you.





8581 NW 17th Place  
Lauderdale West



This is the Admiral "extended" model that allows for both formal dining and family rooms.

2/2 W/F Sold for  
**\$245,000.00**

**Lauderdale West -**  
*Thank you allowing me to represent so many wonderful homeowners and new community residents*  
  
*- Call me for any of your real estate needs.*



8553 NW 12th St.  
Lauderdale West



Completely remodeled 1/2 Villa  
  
1 Bed - 2 Bath  
Sold in the first week on the market for  
**\$180,000.00**



1121 NW 90th Ave  
Lauderdale West



This 2/2 WF has been nicely updated. Remodeled kitchen with granite countertops, impact windows, and doors for your hurricane protection.

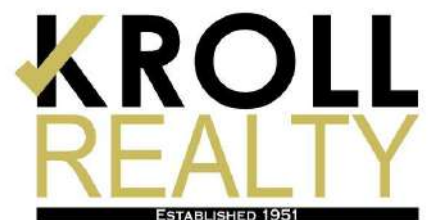
Sold in 4 days for  
**\$280,000.00**

**Call Now-  
We Need  
Inventory !!**

*Making dreams  
a reality*

Natalie Canestri  
Local Sales Agent

954-465-0291  
www.krollrealty.com



# Featured Articles

Board Meeting Dates ..... 7  
 Board of Director Elections..... 7  
 Bulk and Garbage Pickup .....15  
 Bus Schedule ..... 6  
 Calendars ..... 23-26  
 Clubs & Activities .....19-21  
 Directors' Contact Information..... 5  
 Directors' Corner ..... 5  
 Entertainment ..... 22&27  
 Extermination.....17  
 From the Editor ..... 6  
 From the President ..... 4  
 Gym Rules & Etiquette.....18  
 Helpful Phone Numbers ..... 9  
 Home Inspection Report.....40  
 Household Hazardous Waste .....14  
 LW Clubs and Activities Contacts...20  
 Maintenance Auto Debit Form .....35  
 Maintenance Procedures .....16  
 Newspaper Deadlines ..... 9  
 Plantation News.....28&29  
 Puzzles.....36&37  
 Recycling Guidelines.....32  
 Safety Tips.....12,21,29,41,45  
 Swimming Pool Rules ..... 18  
 Veterans .....43  
 Web Site/Social Media Alert.....12



**LAUDERDALE WEST NEWS**

1141 NW 85 Avenue  
 Plantation, FL 33322-4624  
 (954) 473-8219 Ext 126  
 newspaper@lauderdalewest.org

**MANAGING EDITOR**  
 Joanne Hill

**ASSISTANT EDITOR**  
 Lana Famiano

**ADVERTISING EDITOR**  
 Connie Guzzi

**LW ANNEX & GYM**  
 1301 NW 87 Lane  
 Plantation, FL 33322

**LW Board of Directors and Areas of Responsibility 2021**

**Business Office Phone Number: 954-473-8219**



**JENNIE LIPARI, *President***

Notary Public; Administration; Association Compliance; Home Inspections, Bus Schedule  
 Contact: Extension 108 Email: jlipari@lauderdalewest.org



**JOANNE HILL, *1st Vice President***

Notary Public; Legal; Association Insurance; Exterior Painting; LW Newsletter; Recording Secretary; Estoppels  
 Contact: Extension 114 Email: jhill@lauderdalewest.org



**BARBARA BUCCI, *2nd Vice President***

Maintenance Department; Entertainment/Social Events; Landscaping/Trees; Roof Repair/Replacement  
 Contact: Extension 124 Email: bbucci@lauderdalewest.org



**MARLENE NEWMAN, *Secretary***

Lease Applications/Approvals; Pools/Spas  
 Contact: Extension 113 Email: mnewman@lauderdalewest.org



**PAULINE GOSSELIN, *Assistant Secretary***

Notary Public; Sales Applications/Approvals; Volunteers  
 Contact: Extension 127 Email: pgosselein@lauderdalewest.org



**BERNADETTE BRODMERKEL, *Treasurer***

Notary Public; Finance; Irrigation, Pest Control  
 Contact: Extension 104 Email: bbrodmerkel@lauderdalewest.org



**ROSEMARIE DEMMONS, *Director***

Library; Club and Activities  
 Contact: Extension 117 Email: rdemmons@lauderdalewest.org



**JOHNNY McLEAN, *Director***

Facilities Management; Parking Lot/Roadway Paving; Gym  
 Contact: Extension 125 Email: jmclean@lauderdalewest.org



**HAL SPECTOR, *Director***

Director; Plex Insurance Certificates; HO3/HO6 Insurance  
 Contact: Extension 112 Email: hspector@lauderdalewest.org



**JAY STAHL, *Director***

Home Inspections; Exterior Maintenance Compliance  
 Contact: Extension 103 Email: jstahl@lauderdalewest.org



**KRISTI K. WOODS, *Director***

Notary Public; Blue Stream; Technology; Purchasing; Modifications/Architectural Review  
 Contact: Extension 109 Email: kwoods@lauderdalewest.org

**COPYRIGHT**

IF YOU ARE SUBMITTING ARTICLES, DRAWINGS, ETC. FROM A PRINTED SOURCE OR A WEBSITE, PLEASE BE AWARE THAT COPYRIGHTED ARTICLES MAY BE REPRINTED WITH EXPRESS WRITTEN PERMISSION FROM THE COPYRIGHT HOLDER. CREDIT MUST BE GIVEN TO THE ORIGINAL AUTHOR OR SOURCE IN ALL CASES.

**EDITORIAL POLICY**

ALL MATERIAL SUBMITTED IS SUBJECT TO EDITORIAL DISCRETION. PLEASE BE BRIEF AND TO THE POINT AND KEEP A COPY OF ANY ITEM YOU SUBMIT. WE ARE NOT RESPONSIBLE FOR THE LOSS OF ORIGINAL MATERIALS.

**DISCLAIMER**

PLEASE BE ADVISED THAT LAUDERDALE WEST COMMUNITY ASSN NO. 1 INC AND LAUDERDALE WEST NEWS DO NOT ENDORSE ANY OF THE ADVERTISERS HEREIN. THEREFORE, WE ARE NOT RESPONSIBLE FOR ANY CLAIMS, DEFECTS IN PRODUCTS, WORKMANSHIP OR TIMELINESS IN THE PERFORMANCE OF THE WORK. THE ADAGE "LET THE BUYER BE AWARE" APPLIES.

# from the PRESIDENT

**THANK YOU:** To my fellow Board members who continue to work hard for the benefit of LW without the benefit of a salary. They show up every day and make sure that the work they do is done in a professional manner that exceeds the standards for condominium management. We hear almost daily from vendors and residents who are amazed at how efficient and professional we are. The fact is that we do this because we care about our Community. Most of us work overtime without personal benefit or salary. We are proud of our commitment and know that many of you appreciate our efforts to maintain and upgrade our facilities while protecting your financial investment. Thank you to all the residents of Lauderdale West who continue to be good neighbors and friends of the Association. The Board appreciates your continued patience and understanding while we upgrade our facilities and move the Association onto a business platform that will protect us into the future and assist the Board in remaining self-managed. We also appreciate those residents who understand our Declaration of Restrictions limits individual freedom for the benefit of the whole Community.

**FEES:** In accordance with the Florida Statute, we will be raising the fee for Condo Questionnaires and Estoppel Requests to \$250.00 from \$200. These are legal documents that are time-consuming and require specific information about a unit or the Association for a potential buyer and mortgage company.

**PARKING VIOLATIONS:** We have begun to enforce the parking violations as discussed at the last Board Meeting. For the past 2 years we have been placing notices that were being ignored on illegally parked cars. We now place bright orange stickers on illegally parked cars and we have seen a positive response. Suddenly, there are fewer cars that are parked illegally in LW. We will continue to tow cars that are illegally parked. Parking in the daytime with 2 wheels on the same side of the vehicle on the grass is permitted on the swale from 8 am – 12 midnight.

**WORKSHOPS:** The Board has started to meet on Wednesday mornings at 10:00 in the Craft Room to discuss any issues in their area of responsibility. We openly discuss problems and solutions. We do not

vote on anything. We just review and if something needs a vote, we put it on the agenda for the next Board Meeting. This is an open meeting, and the agenda is posted on the Bulletin Board and on our website. The purpose of these meetings is to keep the entire Board aware of what others are working on and to receive input that may benefit LW. We work better together when we are all on the same page.

**LANDSCAPING UPGRADES:** We have begun to upgrade the landscaping around the pump houses and the FPL boxes in LW. 40-year-old woody bushes are being removed along with broken concrete walkways. Walkways will be rebuilt to reduce the liability to the Assn. Our maintenance staff will be doing the work. Many trees along the shoreline that are dipping into the lakes will be removed and new plantings placed further back. We have removed all the dangerous failing concrete tables and benches at the park, and we will replace all the bushes and trees that are removed. We will be adding more benches throughout our Community in the future.

**MAIN CLUBHOUSE A/C UPGRADE:** We are still in the design process and have met with the design engineer, who has completed his evaluation of the ventilation system, and he did not have good news. Apparently, the duct system on both the first and second floors is in terrible condition. Ducts may have to be replaced in certain areas; are no longer connected correctly; are deteriorating significantly or were incorrectly installed originally. Many of these issues could have been from a/c repairs over the years, leaky roofs, or poor design. We are awaiting proposals for the work that can be spread out in phases so we can budget accordingly. We have the necessary funds, but this will increase the cost significantly. We want to let everyone know that this is a major project and we will try our best to reduce any inconvenience or closings of the Clubhouse. This new information reinforces the decision of the Board to do whatever is necessary to repair the entire system correctly for the future.

**Gym/Pool:** When you clean machines before and after use, please put the used towels, empty cups, and bottles in the trash. Inconsiderate people are leaving their trash all around the gym and that is wrong. When you move any furniture at the pool, please put it back where it was. This is our home and if we want it to look nice, we must keep it that way.

# DIRECTOR'S CORNER

By Joanne Hill

According to the new Florida State Law, a specific letter must be sent to those unit owners who are delinquent in their payments. The Board has decided to begin sending out these letters ourselves instead of having our accountants, Juda Eskew and Associates, do so in order to save the cost of their fees. Letters regarding delinquent fees went out in late September.

If payment is not made within thirty days, your file will go to our attorneys, Frank, Weinberg and Black. You will then be responsible for their fees, as well as what is owed to Lauderdale West and our late fees. They usually charge \$195 plus FedEx postage for the first letter they send but those fees are subject to increase as well. After that, their fees accumulate quickly, and you have to pay them.

Remember, payments are due on the first day of each month.

**Be responsible, make your payments on time.**

The Board has been having what we refer to as Coffee Klatch meetings on Wednesdays at 10 AM in the craft room. An agenda will be posted for these meetings, and they are open to all residents. The purpose of our Coffee Klatch meeting

is to give each Director an opportunity to keep all other Directors apprised of what each is doing on a weekly basis and to up-date them on open issues.

Our annual Budget Meeting was held on November 10, 2021. At that time the Board voted to adopt a budget with full reserves. Beginning January 1, 2022, the single family home monthly maintenance will be \$367.00 which is an increase of \$27.00 per month. As was discussed at the meeting, the majority of this increase was due to the replacement of tile roofs which the Board decided to fund over a five-year period thereby keeping the increase as low as possible.

The plex monthly maintenance will be \$340.00 which is an increase of \$10.00 per month.

As with our home budget, the cost of everything is increasing and the Association is not exempt from that.

If you have automatic deductions with your bank, don't forget to notify them of the increase prior to January 1st. If you scheduled your automatic payments directly with our accountants, Juda Eskew and Associates, they will automatically make these increases. Be sure to adjust your account withdrawals accordingly.

**DIRECTORS' PHONE EXTENSION AND EMAIL ADDRESS  
LAUDERDALE WEST 954-473-8219**

Jennie Lipari	ext. 108	jlipari@lauderdalewest.org
Joanne Hill	ext. 114	jhill@lauderdalewest.org
Barbara Bucci	ext. 124	bbucci@lauderdalewest.org
Marlene Newman	ext. 113	mnewman@lauderdalewest.org
Pauline Gosselin	ext. 127	pgosselin@lauderdalewest.org
Bernadette Brodmerkel	ext. 104	bbrodmerkel@lauderdalewest.org
Rosemarie Demmons	ext. 117	r-demmons@lauderdalewest.org
H. Johnny McLean	ext. 125	jmclean@lauderdalewest.org
Hal Spector	ext. 112	hspector@lauderdalewest.org
Jay Stahl	ext. 103	jstahl@lauderdalewest.org
Kristi Woods	ext. 109	kwoods@lauderdalewest.org



# From The Editor

*Joanne Hill*

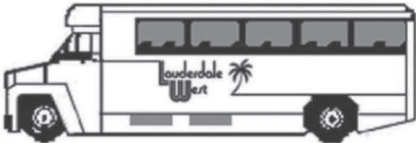
Hallelujah! The pool and spa at the Annex/Satellite Clubhouse are complete and they look great! I'm sure you are enjoying them. If you haven't been there yet, take the time to check them out. You will see a big difference.

The Main Clubhouse has never looked better. A lot of work has been done by our maintenance crew during the pandemic to spruce up all the rooms. Some room changes have been made. The Library is now downstairs where the Gym was and the Pool Room is where the Library used to be. We have many card and game rooms for your use. Why not partake of what our Community has to offer!

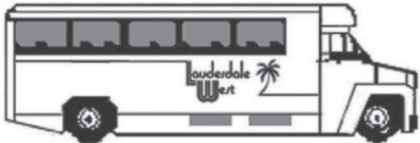
Elections for the Lauderdale West Board of Directors are coming up in March 2022. Now's the time to consider running for the Board. I'm tired of hearing all the complaints about the Board doing this or not doing that. The best way to know what the Board does or doesn't do is volunteer at the Clubhouse and see exactly what we do and how much time is spent by your Directors every day – and many evenings! Do something about it by getting involved or stop complaining.

Speaking of volunteers, we have so many knowledgeable and wonderful people assisting your Directors and the Association by giving their time and expertise every day. We are grateful for all of them. But there's always room for one (or two or three) more! Get involved! It will probably surprise you as to what it takes to run a Community like Lauderdale West. It's not all fun and games, but sometimes it is!!

Wishing you Health and Happiness in the New Year!



# BUS SCHEDULE



*Your Driver is Pete - 954-496-2543*

MONDAY	TUESDAY	WEDNESDAY	THURSDAY	FRIDAY
<p><b>9:00AM-11:00AM</b></p> <p>DESTINATION: PUBLIX BANK OF AMERICA</p>		<p><b>9:00AM-11:00AM</b></p> <p>DESTINATION: WALMART (OAKLAND PARK) BRAVO SHOPPING CENTER WELLS FARGO</p>		<p><b>9:00AM-11:00AM</b></p> <p>DESTINATION: PUBLIX BANK OF AMERICA</p>
<b>NOTICE</b>			<b>PICKUPS</b>	
<p><b>SIGN IN REQUIRED BEFORE BOARDING BUS</b></p> <p><b>DESTINATION STOPS ONLY</b></p> <p><b>PLEASE BE OUTSIDE HOME FOR PICKUP</b></p> <p><b>VIDEO SURVEILLANCE IN USE ON BUS FOR YOUR SAFETY</b></p>			<p><b>FOR PICK UP</b></p> <p><b>CALL PETE ON DAY OF TRIP</b></p> <p><b>954-496-2543</b></p>	
<b>BUS FARE: FREE TO ALL RESIDENTS</b>				





Our Lauderdale West Community has established principles of conduct for the general good and welfare of all our owners, tenants, and guests. Every resident of our Lauderdale West Community has the right to live peacefully in their home and has the right to expect that the value of their property will be upheld in a reasonable manner.

The Board of Directors would like to remind everyone of the following:

- For the safety of everyone, we **MUST** follow all parking restrictions and the directional signs in the parking lots.
- Owners, tenants, and guests are required to follow our documents and rules and regulations.
- Owners are responsible to maintain the exterior of their homes (gutters, awnings, patios, landscaping).
- Residents are not permitted to install any plants, shrubs, or trees without written Board approval.
- Owners (Landlords) must contact the Maintenance Department for all service requests for their property. Requests will not be accepted from tenants or guests.
- Owners, tenants, and guests are required to follow City ordinances regarding animals.
- Owners are required to seek approval for all home modifications in advance.
- Front pole lights and rear security lights must be kept on at night.
- Owners are responsible for their tenants and guests.
- Residents must respect quiet times from 10:00 PM to 8:00 AM.
- Non-adherence to the Lauderdale West documents and rules and regulations will result in the resident being fined accordingly.

For more information, please visit [www.lauderdalewest.org](http://www.lauderdalewest.org) for a full explanation of our violation procedures and fines.

## SHOWERING AT THE POOL

By Joanne Hill



Look at this picture. What do you think you see? Maybe some decorative stones? Maybe some crown molding? Or some kitchen backsplash tiles? How about a border around a garden? Prayer stones?

Nope! What you see are Mr. Clean Magic Erasers in differing stages of clean – or filth! Obviously the one in the center is a brand new, clean one. The others have been used to clean the blue tile around the main pool. Disgusting, right? YES, IT IS!

That gunk on the erasers are the effects of putting on sunscreen – which is absolutely needed without question – but then NOT showering be-

fore you enter the pool!

I hate to say this but it's possible that some of this is from people not cleaning or showering themselves at home.

The Lauderdale West Mermaids (as I like to call us) are a group of ladies who exercise at the pool Monday through Friday mornings beginning at 6:30 AM. They are Pauline Gosselin, Marlene Newman, Kerry Osborne, Sandy Spector, Brenda Wales and me.

At least three mornings a week we use Magic Erasers and clean the gunk off the tiles. Unfortunately, we cannot afford to have our pool contractor clean the pool and tiles every day – that would increase our monthly maintenance exponentially.

We hope you are as grossed-out as we are, and this will encourage you to **SHOWER BEFORE ENTERING THE POOL!** This goes for children as well as we know we must take extra care of them in the sun, and we lather them up with sunscreen. But it doesn't absolve them from showering as well!

Do the right thing, shower!





**Helpful Phone Numbers  
and Email Addresses**

Beach Environmental (Pest Control)	954-458-1104
Blue Stream	954-282-6578
Broward County Health Department	954-467-4700
City Hall – General Information	954-797-2200
Code Enforcement	954-797-2267
COVID Vaccine Appointment (Over 65)	866-201-6313
Fire Department – NON-emergency	954-797-2150
Florida Power & Light (FPL)	954-797-5000
<b>LW Maintenance</b>	<b>954-473-2595</b>
Plantation Recycling	954-452-2535
Poison Control Hotline	800-222-1222
Police Department – NON-emergency	954-797-2100
Suicide Prevention Lifeline	800-273-8255
Water Department	954-797-2290
Westside Hospital	954-473-6600

\* To reach the MAINTENANCE Department during regular hours, please call: **954-473-2595**.

Leases:           leaseapplications@lauderdalewest.org  
 Maintenance:   maintenancedept@lauderdalewest.org  
 Sales:             salesapplications@lauderdalewest.org

**PLEASE READ:  
IMPORTANT  
MESSAGE**

When leaving a voice mail message for your Directors, the Maintenance Department, and/or other departments, please speak **slowly** and **clearly**. Provide your name, address, telephone number and a **brief** description of your issue. Please repeat and spell your last name and repeat your telephone number. Thank you.



**February/March 2022**

**Articles are due December 17**

**New advertisers due December 8**

**Returning advertisers due December 15**

Email to: newspaper@lauderdalewest.org  
 or drop off at room #121

The Newspaper Office is open  
 Monday, Wednesday, and Friday  
 from **9 AM** until **noon**

We can be reached at:  
 newspaper@lauderdalewest.org

**OFFICE**



For our Board to be more efficient in the handling of their responsibilities, a procedural policy continues to be in place.

1. Please make your first stop the Front Desk in the Lobby.
2. Provide your name, address, and the area of your concern.
3. The Lobby Assistant will then notify the Board Member overseeing that area that you are waiting in the Lobby.

Residents are discouraged from just walking into

the President's or other Board Member's office with their concerns. Residents are discouraged from lingering around a Board Member's door. We ask that you wait in the Lobby - you will be called when it is your turn.

**EVERYONE'S TIME IS IMPORTANT AND THIS WILL ENSURE THAT ALL RESIDENTS ARE SEEN IN A TIMELY MANNER.**

We ask for your cooperation, which will enable the Board to budget their time to conduct the business of Lauderdale West. Thank you.



## Lauderdale West AFTER HOURS LOG

To promote safety and quick response time for First Responders, everyone coming into the Main Clubhouse after 12 Noon must sign the Logbook on the front desk. Since you may possibly be in the building alone, we ask that you sign in with your name, area you are going to, time in AND please sign out upon exiting the building. Should an emergency arise, **this could save your life**, as the Responders need to know who is in the building and where you are located. We know it is an extra step for you, but we are working to ensure everyone's safety.

Thank you for your cooperation.

## INFORMATION Update NEEDED

Have you discontinued your telephone land line? Are you using a cell phone instead? Do we have your correct contact information? If you have not already done so, please complete the Resident Contact Update Form on our Website: [www.lauderdalewest.org](http://www.lauderdalewest.org). Just click on the "Resident Contact Update" tab to fill out the simple on-line form. The tab can be found on the main page, third tab on the left in light blue.

If you do not have access to a computer and the internet, you may obtain a form in the Main Clubhouse at the front desk.

It is vital that you complete the Resident Contact Update Form at your earliest opportunity to ensure your information is correct and current.

## Volunteers Make a Difference

Lauderdale West needs you! We are a Community run by residents. Our Board of Directors are all volunteers. There is always a need for many volunteers. Opportunities are here to work in an area of your choice; make new friends; learn a new skill or use the skills you have. You can work as much and as often as you would like. Call Pauline Gosselin at 954-473-8219 ext.127.

# GUTTERS & ROOFS

## ROOFS

**NO ONE** is permitted on your roof **EXCEPT LW APPROVED** contractors. If you hire a contractor to clean or repair your roof, and they damage your roof in any way, you are responsible for any and all repair costs.

## RAIN GUTTERS

All gutters are the responsibility of the owner. They must be kept clean, both inside and out – meaning the owner must remove, on a regular basis, all leaves and trees that may be growing out of the gutters. If the debris in the gutter causes damage to your roof or fascia board, you will be held responsible for all repair costs.

Gutters should be cleaned every other month, especially if you have trees near your homes.



## PLUMBING PROBLEMS

To avoid plumbing problems, **DO NOT** flush cigarette butts, flushable cleaning wipes, paper or cloth towels or diapers. Please, **ONLY** flush toilet paper.



## POLE LIGHTS

If your pole light is not working, make sure the switch inside your house is on. If it still does not work after dark or it stays on during the day, call the **Maintenance Department at 954-473-2595**. They can also replace any missing or damaged numbers on your globe.

# HELPFUL INFORMATION

## ABOUT LIVING IN LAUDERDALE WEST

**LANDLORDS** Please remember that you cannot rent your property until you have owned it for one year. All tenants must complete an Application for Residency which is available on our Website. All leases and lease renewals must be approved by the Board before the tenant can move in. Contact Director Marlene Newman for additional information.

**MAILBOX SAFETY** We recommend that you not place any outgoing mail in the mailbox in front of your home. We are aware of individuals removing that mail. You can safely deposit your outgoing mail in the blue Postal Service Mailbox located at the end of the parking lot of the Main Clubhouse or take it directly to any US Post Office. Incoming mail should be removed from your mailbox at your first opportunity.

**MODIFICATIONS** If you are planning to make any changes to your home, you must complete an Application for Modifications. All modifications must be approved by the Board before any work is started. Modifications may include A/C, windows, doors, patios, enclosures, electrical, plumbing, and widening of driveways. The City of Plantation requires permits for most modifications which includes plumbing and electrical work. Contact Director Kristi Woods for additional information.

**PARKING** Overnight parking is not permitted on any street in Lauderdale West. Parking at the Main Clubhouse and the Annex (Satellite Clubhouse) is limited to those using the clubhouse facilities, the pools/spas, or the tennis courts. Other parking requires written Board approval, and a limited parking permit is available. There is no overnight parking in ANY of our parking lots without prior permission to do so. Follow the directional arrows in all parking lots to avoid a fine. A notice will be placed on illegally parked vehicles before being towed at the vehicle owner's expense.

**SPEEDING** The speed limit in Lauderdale West is 25 miles per hour. All our walkers and bike riders have the right of way. Slow down when you see them. Stop at all stop signs. Signal for all turns. Follow the directional arrows in all parking lots and drive slowly. Driving through the parking

lots as a short cut is not permitted. Violators will be fined. Plantation police are asked to monitor our roadways.

**TRASH** All trash must be placed in City of Plantation blue bags. Trash pickup is on Tuesdays and Fridays. You are permitted to place trash out after 5 PM the night before.

**RECYCLE** All recycle items MUST be placed in City of Plantation clear bags or paper bags. Recycle pickup is on Tuesdays only. Boxes must be flattened first and placed alongside the clear bags.

**BULK PICKUP** You may put large bulk items at the curb usually on the second Tuesday of the month. Please see the Newsletter for the exact date. Black bags will not be picked up.

## BEES AND WASPS

By Bernadette Brodmerkel  
954-473-8219 – Ext 104

It has come to our attention, there are beehives in our area. Stay away from them. We have a beekeeper who will come to your location and remove the hives. Honeybees are not destroyed; they are moved to a safer environment. Africanized bees are destroyed as they are dangerous.

Also, if you see a wasp nest, please let me know. We will send someone out to spray the nest and remove it.



## ROOM RENTAL PROCEDURE

Lauderdale West only rents out Room 113 for immediate family functions for up to 70 people. The cost to rent room 113 is \$100; set up and cleanup is \$50; security deposit is \$500, payable in three separate checks.

The paperwork required to rent room 113 is as follows: photo ID; Declaration page for your Homeowners/Renters Insurance; three checks as stated above.

If you are interested, please call the Clubhouse any morning from 9 AM until Noon and you will be directed to the room coordinator.

## Please remember ... **BE COURTEOUS**

There is never a need to be rude to anyone, whether in person or on the phone. The Board Members and our Business Office Volunteers, Edna, our Maintenance Admin and the Maintenance Team are all busy working for you, the Lauderdale West Community. Please be courteous to them.

Unless you have an absolute emergency, during our regular business hours, your situation will be addressed the following workday.

If you have an active plumbing leak, turn off the water shutoff valve to that sink or toilet or at the main valve outside your home or plex. If you cannot physically turn off the valve, call a neighbor or friend to do it for you. Yelling and threatening our Maintenance Staff will not get your problem addressed any sooner.

Remember, be respectful and courteous!

# ATTENTION!

**MONTHLY MAINTENANCE PAYMENTS are due on or before the first day of each month; NOT the 5th, NOT the 10th.**

If not paid by the 10th, a late fee will be assessed, and you will receive a letter from the LW Board of Directors. If payment is not made within 30 days, expect to receive a collection letter from the Lauderdale West attorneys. Once your account is turned over to our attorneys for collection, you will also be responsible for their fees **(\$195)** for the preparation and service of that collection letter plus FedEx postage. Please remember, all fees are subject to increase.

## WATCH OUT FOR FRAUD SCAMS TARGETING OLDER AMERICANS

*AvMed Aspire Magazine – Summer 2021*

Fraudsters targeting older adults are becoming more creative. "Scammers stay on top of whatever is new, such as the popularity of Zoom, COVID-19 vaccines and online shopping and then move fast to create ploys that best fit the moment," says Amy Nofziger, director of fraud victim support at AARP.

# Be Aware and Beware

## WEBSITE/SOCIAL MEDIA

**Please be aware**, any method used by Lauderdale West to communicate with you will be by posting in the Lauderdale West News, on our existing Website, ([www.lauderdalewest.org](http://www.lauderdalewest.org)), communicated on Lauderdale West stationery, on our Email blasts or text messages or on the Community Channel 901.

Any other online networks, Websites, Facebook pages, etc. are **NOT** sanctioned by Lauderdale West Community Association No. 1, Inc. Even though Lauderdale West may be included in the title and participants may be residents of Lauderdale West, they are **NOT** endorsed by and have nothing to do with Lauderdale West Community Association No. 1, Inc. **BE CAUTIOUS WHEN SHARING YOUR PERSONAL INFORMATION AND BE AWARE OF FALSE INFORMATION COMMUNICATED ON THESE SITES.**

**WARNING!**  
**BUYER  
BEWARE**

## BEWARE OF UNLICENSED WORKERS

When you hire someone to do work in your home, be sure to check their insurance and license. The person/company needs to have a current license issued by the City of Plantation if their business is in Plantation. Be sure to see a copy of their insurance to confirm they have coverage.

Many jobs require a permit from the City of Plantation. It is important that you do your research. Call the City before work begins to determine if you need a permit. **DO NOT** rely on your contractor to inform you of that fact.

Whatever you do, **NEVER** hire someone who just knocks on your door and offers to do work for you. This decision may cost you in the long run for poor workmanship and problems that could arise for which they cannot fix/pay. They may scam you and cause more damage to your property.

Do not wait until there is a problem and wish you had hired a licensed/insured worker.



## TO OUR NEW RESIDENTS

*Jeannet Patricia Amayo & Ramiro Alayon*  
*Diego & María Averta*  
*William Bierbruer*  
*Gary Blair*  
*Joann Calleri & Thomas Noetzel*  
*Carmen Contee*  
*Andrew Corey*  
*Melvina Dick*  
*María DelCarmen Fuentes & Yahsyra Melisa*  
*Dazza*  
*Robin Hofberg*  
*Daniel & Irene Kavanagh*  
*Nancy Landano*  
*Carol Anita Latimor*  
*George Mulero*  
*Bach Nguyen*  
*Frank Puig*  
*David Smith*  
*Martha Isabel Soler*  
*Donna & Edward Stanis*  
*Patricia Turner*  
*Nancy Weiner & Charles Kusmich*  
*Renetta & Jacqueline Williams*



VERONICA JAMIEL



- To Barbara Blake, Dona Volk, Connie Guzzi and Jeff Bender for superbly covering Kristi Woods' office while she was away.
- To Steve Caplan who has the unenviable task of performing home re-inspections for Jay Stahl. Steve has taken flak from owners and has never lost his cool! He is a tremendous help to Jay, and we thank him.
- To Susanna Faver, Estelle Taylor and Pinky Trapani who substitute at the front desk when needed. Thanks for stepping up!
- To our maintenance guys for renovating the dressing rooms and lounge backstage in the LW Auditorium. Thank you, gentlemen!
- To all our new volunteers and those that have been here a while. We could not do this without you! Much thanks.
- To Estelle Taylor and her Entertainment Committee (Diane Burke, Lana Famiano, Hilary Hofstetter, Ricki Johnson and Linda Owen) for a wonderful show with Majesty of Rock! We were rockin'!!
- To Lana Famiano and Connie Guzzi. These Ladies are the ones that put together the LW Newsletter and, as always, it is fabulous! They are much appreciated!

## INHERITANCE OR FAMILY REAL ESTATE TRANSFERS

Lauderdale West is required to maintain correct, up-to-date information on all homeowners. If you inherit a plex or single-family home in Lauderdale West, you must notify the Applications/Sales Office immediately (954) 473-8219 Ext. 127. Before we can change the name in our records, we will need information from you, such as a completed application which can be found on our Website. We will also need a copy of the death certificate and a copy of the legal papers giving you rights to the property. When we have updated our records, you will be able to live here or sell the home. This also applies if you are transferring the property to another family member or a trust. Written Board approval is required of all owners regardless of how you acquired the property. We cannot issue a Certificate of Approval if we do not have the complete and correct information that can be found in the application. Remember, you cannot rent the property for one year after acquisition of title. Thank you for your cooperation.

# HOUSEHOLD HAZARDOUS WASTE (HHW) & ELECTRONIC RECYCLING

## HOUSEHOLD HAZARDOUS WASTE (HHW) & ELECTRONIC RECYCLING

The City of Plantation, in conjunction with the City of Sunrise, conducts Household Hazardous Waste (HHW) Collection Events. These events are open to residents of these cities only, free of charge with proof of residency.

Convenient drive-thru services provide staff to unload your hazardous waste; you are encouraged to remain in your vehicle. You are asked to keep the hazardous waste products in their original containers, or to label them clearly. All lids must be sealed tightly, and leaking containers should be placed in a large plastic container.

### Plantation Location

Public Works Compound  
750 NW 91 Avenue  
Plantation, FL 33324  
Hours: 9:00 AM – 1:00 PM

### Sunrise Location

Public Works Complex  
10500 NW 55 Street  
Sunrise, FL 33351  
Hours: 9:00 AM – 1:00 PM

Household Hazardous Waste (HHW) includes paint, tires, and similar materials. Electronic Materials include computers, computer monitors, televisions, printers, scanners and similar devices. Neither HHW nor Electronic Materials are collected as solid waste, recyclable, or bulk trash.

**ONLY** the **City of Sunrise** allows you to bring 3 boxes of paper to be shredded on-site.

## ALTERNATIVE WASTE DISPOSAL SITE

The City of Plantation, in conjunction with Wheelabrator, offers all residents the opportunity to dispose of Yard Waste, Furniture, White Goods, Household Hazardous Waste, and Electronics at the following location. Proof of residency required.

### Wheelabrator South Broward

4400 S State Road 7  
Davie, FL 33314  
954-581-6606

### Hours of Operation

Saturdays – 8:00 AM – 4:00 PM  
Closed on Holiday weekends

## ELECTRONIC RECYCLING & DISPOSAL

Free drop-off of certain electronics waste, specifically batteries, DVD players, speakers, stereos, VCRs, laptops, computers, wires and cables, battery backups, servers and monitors is available at the following location. Please call for specific drop-off dates.

### Urban Mining Residential Drop-Off

3983 NW 19 Street  
Lauderdale Lakes, FL 33311  
954-906-1609

### Hours of Operation

Tuesday – 7:00 AM – 11:00 AM  
Friday – 1:00 PM – 4:00 PM

## RESIDENTIAL MEDICAL WASTE DISPOSAL

Prescriptions should be sealed with tape and placed into your blue garbage bag. **NEVER** flush medications down the toilet or sink. They will contaminate the drinking water supply.

Needles need to be placed into a Sharps container and can be dropped off at:

- Prescription Pad Pharmacy, 333 NW 70 Avenue, Ste 102, 954-791-2000
- Cost is \$5/2 containers. (Cost is waived if a new container is purchased.)

For more information on the disposal of prescription medications, please contact the Broward County Health Department, 954-467-4700.

## BULK & GARBAGE PICKUP

### Bulk Pickup:

**Tuesday, December 14, 2021**

**Tuesday, January 11, 2022**

*Please* **DO NOT** put Bulk Pickup items out until Monday afternoon **AFTER 5 PM** the day before Bulk Pickup is scheduled. **LW does not need to look like a dumping ground. Place Bulk Pickup AWAY from the mailboxes, trees, and street signs.**

**Thank you for your cooperation.**

**BULK PICKUP** – Our next Bulk Pickups will be Tuesday, December 14 and Tuesday, January 11. The following items will not be accepted: batteries, **black bags**, chemicals, concrete including bricks or pavers, electronics, fencing, fluorescent bulbs, glass not properly wrapped, insecticides, oils and paints, paint cans, x-rays, construction materials, tires. (For disposal of these items, refer to the article on Household Hazardous Waste & Electronic Recycling on page 12). To ensure the safety of Waste Management drivers, mirrors, glass tabletops, windowpanes, plate glass, etc., will only be picked up if they are properly and safely placed in a rigid container. Any broken glass must be placed into a secure container and marked as glass. If items are small enough, they must be put in clear bags. Black bags will not be accepted. Empty cardboard boxes will be accepted.

**GARBAGE PICKUP** – On Tuesday - blue bags and clear recycle bags. On Friday – blue bags only. Bags should not be put out until **5 PM** the night before pickup.



Please add our Lauderdale West telephone number to your contacts to prevent our calls from being tagged as potential spam. It is 954- 473-8219.

If you subscribe to our text messages, please add our outgoing text number to your contacts. It is 844-500-8542. **DO NOT** reply to text messages with questions or comments. To keep costs down, we only pay for outgoing messages. If you have a question or comment, please contact the appropriate Director or our Webmaster. Director names and their areas of responsibility are listed in the LW News, on [www.lauderdalewest.org](http://www.lauderdalewest.org), and Blue Stream Channel 901. Our Webmaster can be reached by email at [webmaster@lauderdalewest.org](mailto:webmaster@lauderdalewest.org).

## AVOID SELLING DELAYS

### Applications and Approvals

If you are planning on selling, please clean up the outside of your home. Any plants, trees or bushes on the common area must be removed; awnings cleaned and painted; flower beds weeded; and patios and driveways pressure washed. The most common holdup in processing the sale of your home is the seller's delay in cleaning up the outside of their home. Be proactive – avoid delays and clean up now!



## BLACK RODENT BAIT BOXES



We live in a water community and wherever you have water, you are more susceptible to rats. Throughout our Community, there are rodent bait boxes set up by our pest control company to deter/kill rats/rodents. Each box is numbered and has been strategically placed on the property against the house.

- Do not move the boxes. The boxes **MUST** remain where they have been placed. Each box is marked on a map and must remain in that spot.
- You will be **finned** if the box on your property is not in its designated position.
- **Do not TOUCH the boxes.** They are filled with **poison**.
- If a rodent problem occurs, call maintenance at 954-473-2595 and report it.
- Broken or missing bait box replacement cost is \$22. We will charge the resident when one is missing.



## ATTENTION *all* ANIMAL OWNERS!



Lauderdale West is a **NO PET** Community. The Board continues to receive complaints about the increase in the number of animals on our property and residents who do not leash or clean up after their animals. Animal noise, i.e. barking, whining, etc. has also become an issue and is creating a nuisance in the Community.

### SERVICE AND EMOTIONAL SUPPORT ANIMALS

Service and emotional support animals are not considered pets, so restrictions that apply to pets do not necessarily apply to them. Emotional support animals are companion animals that provide therapeutic benefits for people with mental disabilities or medical issues. These animals do not have to be trained, unlike service animals that are trained individually to perform specific tasks to help a person who is disabled. You must not discriminate against someone with one of these animals any more than you would if someone were in a wheelchair.

### IF YOU REQUIRE THE SERVICES OF A SUPPORT OR COMFORT ANIMAL

In Lauderdale West, there are obligations you must abide by in order to receive written Board approval to have the animal in your home. There are new laws in Florida for assistance animals. For each animal, you are required to sign and have notarized a Request for Animal Accommodation stating you understand your responsibility as an animal owner and to provide accompanying docu-

mentation such as:

- Register your animal with the Applications and Approvals office.
- A doctor's letter stating your need for such an animal.
- A current dog license.
- Proof that vaccinations/shots are up to date for your animal.
- A homeowner's insurance policy with liability coverage.

All animals must be personally attended to and on a leash when outside the home. They may not be tethered to a tree, porch, or patio. If the animal becomes a nuisance or threat to the Community, it must be removed.

In addition to the foregoing, animal owners **must:**

- Be responsible for animals that reside in their home.
- Follow all City and County Ordinances.
- Clean up after their animal anywhere in Lauderdale West. Be advised, you must properly dispose of the bag of animal waste in **YOUR** trash container, not in a Community trash can. Do not put it down a drainage grate or throw it in the lakes or canals. This becomes a bacterial hazard to our water system.

By following these guidelines, everyone benefits including your animal. Failure to register and meet the above requirements will result in fines. Thank you for your cooperation.



## MAINTENANCE *Procedure*

If you have a situation which requires the Maintenance Department, you **MUST** contact Edna in the Maintenance Office directly at 954-473-2595 or by email: [maintenancedept@lauderdalewest.org](mailto:maintenancedept@lauderdalewest.org). **DO NOT** address our maintenance staff concerning your issue as this will only delay your job getting done.

If the work to be done is outside your home, you do not need to be at home when the work is done. **EMERGENCY PROCEDURES:** Maintenance staff will no longer be available for emergency calls after business hours or on weekends. If you have a plumbing or electrical emergency after business hours or on a weekend, you must call an outside contractor at your own expense. If you have a "medical emergency", please call 911 immediately.

**REMEMBER:** Contact Edna in the Maintenance Office at 954-473-2595, Monday – Friday 8 AM – 4 PM or email: [maintenancedept@lauderdalewest.org](mailto:maintenancedept@lauderdalewest.org) and get a work order number.



# IRRIGATION, EXTERMINATION & WILDLIFE

*By Bernadette Brodmerkel, Director*

## Irrigation Issues

Aside from the timers that need adjustments, most of our irrigation calls are for water hitting cars and driveways.

Please understand we cannot help when it is windy and sprinklers are on. I was advised that our sprinkler heads are approximately 12 inches from driveways. Each time Gary Cox Irrigation receives a work order about "sprinkler adjustments" and there is nothing wrong, Lauderdale West is charged a fee.

Our monthly maintenance agreement does not cover windy days. Most of us use the garage for our cars; those who don't will be subject to water hitting the cars or driveways.

My advice, get a shammy and wipe down your car. This will clean water spots. Also, if water spots are on your windows, CLR will clean it up beautifully. It does take a little elbow grease, but I can tell you from my own experience, it works.

Home Depot sells sprinkler guards for approximately \$5.00 each. Placing these guards will prevent the sprinklers from spraying your car or driveway.

We do not have on site technicians. They are here 2 weeks a month. You will not be getting immediate response to your request, but issues will be addressed. If there is an emergency, technicians will be here.

## Exterminators

Beach Environmental is very busy with termite fumigation. We have had an unusual infestation of termites this year, so there is no such thing as

ASAP! After inspection, and it was determined your home has termites, you will not be tented immediately. If you must vacate your home because it is being tented, Lauderdale West will not pay for your housing/hotel. You are responsible for that cost.

The outside of your home is sprayed monthly. If you have an issue with ants and spiders, please keep a can of Raid on hand; Terro bait boxes work as well. We will not be sending Beach technicians out mid-schedule. Also understand, there are so many different types of bugs outside your home, each of them has a job to do. Of course, if it is determined that these bugs pose a health issue (bees, wasps, red ants) these will be addressed.

If you would like the inside of your home sprayed, Beach Environmental charges a special rate to Lauderdale West residents of \$15.00 per month for a yearly contract. It is recommended that payment be made by **CASH OR CHECK!!** **If you choose to pay with a credit card, you will incur a service fee!!**

We have snakes in our area. Home Depot has a product called Snake Away. Buy this and keep it in your home just in case. This is a very effective product.

## Wildlife

Please do not feed ducks or geese. They are able to find their own food. They will eat what you give them and leave a big mess afterwards. We then receive calls from residents complaining about the mess which is not our responsibility. **STOP FEEDING THE WILDLIFE!**



This is an invasive plant (purple/green) that is appearing in many places in Lauderdale West. It spreads on runners and into clusters where snakes, rats, etc. like to hide.

The Association is removing it from common areas, but we need your help in removing any that appear in your area. Thank you for helping keep our community clean.



## SWIMMING POOL HOURS

The main pool is open from 6 AM to 9 PM and you must leave the pool area by that time. **Satellite pool is also open.** Thank you for your understanding.

## SWIMMING POOL RULES

This is just a reminder: everyone must follow the posted pool rules.

- There is no lifeguard on duty; use of the pool and pool area is at your own risk.
- Only residents and their immediate family are allowed in the pool area.
- **NO** animals are allowed in the pool area or the Patio Plaza outside the pool area.
- The pool gate must remain closed. Do not prop open a pool area gate.
- Showering is required **BEFORE** entering the pool per the Broward Department of Health.
- Allow residents who are swimming laps the right of way.
- No diving is allowed.
- Children must be supervised by an adult, **at all times**, in the pool area, especially when they are in the water – THERE IS NO LIFEGUARD ON DUTY.
- No child under the age of 16 is allowed in the spa/hot tub.
- No jumping, running or loud noise in the pool area.
- No food, drink or glass is allowed in the pool area. Plastic water bottles are allowed.
- Vacate the **pool area** during rain, thunder, or lightning – sitting under the metal awnings is dangerous.
- Incontinent or non-trained individuals must wear swim diapers.
- No smoking or vaping is allowed in the pool area.

The Lauderdale West Community Association reserves the right to deny the use of the pool or pool area to anyone at any time for just cause.

If you fail to follow the above rules, you will be asked to leave the pool area and your pool privileges may be revoked. If the posted rules and the rules set forth above are violated, the pool will be closed.

## ANNEX/SATELLITE POOL

The spa and pool at the Annex/Satellite Clubhouse have been completed and they look terrific. If you haven't been there yet, take an opportunity to check them out.

## RULES FOR USE OF THE GYM



1301 NW 87 Lane  
Hours: 7 AM – 9 PM

1. Wear proper attire. No swimsuits or flip flops are allowed in the gym.
2. No food or beverage, except water in plastic bottles, is allowed in the gym.
3. No one under the age of 18 is allowed in the gym.
4. The gym is for the exclusive use of Lauderdale West residents. Outside guests are not allowed.
5. Use of the equipment while alone is discouraged. Use the "buddy system" to be safe.
6. The gym is under camera surveillance. Disregard of any of these rules may result in a fine or removal of these privileges.

## PROPER GYM ETIQUETTE

With all the flus and viruses going around, it is now more important than ever that you clean the equipment before and after each use. Antibacterial wipes, Lysol and a paper towel dispenser are available for your use. Please use them!

Remember, if there is someone waiting for a machine that you are using, you are allowed a total of 20 minutes on that machine, not 20 minutes after that person arrives. Be courteous. It may be you waiting for that treadmill next time!

# WOMEN OF LAUDERDALE WEST

By Pinky Trapani, President 954-472-1652

It's hard to believe this is our last LW News of the year. What a year. Together we got through it with phone calls and hands reaching out to one another. I hope everyone had a blessed Thanksgiving with family and friends. No matter what came our way, we had so much to be thankful for.

The November luncheon was successful, and we enjoyed chicken in place of turkey. What joy in selecting a child's name from our Angel Wish Tree. The child's gift should be wrapped brightly, and the card should be taped securely on the outside for Santa to be able to read it.

We have chosen our own entrée for the December luncheon. It will be at 10:30 AM, to give us time to check in our child's gift and to check in our grab bag gift. No more than a \$5 gift. If you bring a gift you get to pick a gift.

January 2022 brings us to the start of our fifth year of Women of Lauderdale West for Kids in Distress. At this time, we have not finalized our plans for the January luncheon. Your wonderful ladies will fill you in after our November Ladies meeting (used to be called board meeting). All are invited to share your ideas.

By the end of 2021, we will have given approximately \$17,000 in gifts, educational tools and supplies as well as articles for their playground to Kids in Distress. Hopefully we will be getting pictures soon so they can be posted for all to see. Soon, hopefully, when this virus dies down, we will once again visit Kids in Distress. It will be exciting for you to see firsthand what we have accomplished for these children.

As we close out 2021, we women want to wish all a very Happy Hanukkah, Merry Christmas, as well as a Happy Kwanzaa. We especially wish you and everyone, the happiest and healthiest 2022.

A special thank you to our Board of Directors in getting us through another year, our wonderful Newspaper staff for our beautiful newspaper and especially the lovely article of being grateful and thankful.

A thank you to our unsung hero, Jeff Bender, for 901 and 902 that keep us well informed. Please read your paper and watch your TV channel. The time and effort they put forth is for our benefit.

Yes, there is life out there, so come on out and enjoy your time with us for fun, new friendships, and a worthy cause.

See you soon. Need information? Call me, Pinky 954-472-1652.

## SOCIAL CLUB

By Marlene Newman

On behalf of the Social Club, I want to thank Steve and Estelle Taylor for all the hard work they have done over the past four years. They are wonderful people and worked so hard to keep the Social Club going.

I also want to thank all the volunteers who came forward to help run the Social Club: Bob Newman, Vice President; Barbara Bucci, Entertainment; Bernadette Brodmerkel, Treasurer; and Marion Zegar, Secretary.

And thank you to my sister, Sandra Spector, who has helped me from the beginning, organizing the telephone committee, the set-up committee, and

the check-in committee. She also worked very hard getting people to sign up and help.

Those people are: Harvey and Charlotte Abraham, Dotti Amon, June Asaro, Barbara Blake, Judy Buono, Pat Cole, John and Laurel Daley, Suzanna Favor, George and Beverly Farron, Joanne Hill, Shirley Jenkins, Gloria Lipson, Bobbi Kalkstein, Denise Ready, Susan Rose, Dottie Royce, Bonnie Schmidt, Pinky Trapani, Marlene Sacco Vasilakos, Chuck Vasilakos, Leslie and David Wilkes, and, of course, Steve and Estelle. A big thank you to all for helping with the Social Club.



*... and a new year of peace and happiness!*

THE HAPPIEST PEOPLE DO NOT HAVE THE BEST OF EVERYTHING.  
THEY MAKE THE BEST OF EVERYTHING THEY HAVE.

# HALLOWEEN PARTY BOO!

By Anna Bender

The Halloween party on October 30th was a huge success. We awarded prizes for three amazing and inspired costumes. The decorations were BOOtiful and many attendees brought Halloween themed goodies to share. A big thanks, as always, to our ticket sellers as well as our JBA decorators also known as the "Crew."

We look forward to seeing everyone at our **NEW YEAR'S EVE** event.

## you must know

original poetry by Lydia Shutter



you must know  
 on this roller coaster of life  
 ups and downs are meant to be  
 the wind is meant to make the leaves dance  
 the rain is meant to make the ducks smile  
 and my words, dear one  
 are to help you feel my essence  
 and realize once and for all  
 you are not alone

© 2021 Lydia Shutter

### Make your own Florida Model Railroad Bridge

The kits are of Florida Railroad Bridges and scaled for HO model trains. Ray has a large supply that he needs to dispose of, and the price is right!

**The KITS and Classes are FREE.**

This will be a class for all you Railroad and kit hobbyist of any ability! Contact Ray Russell 954-649-0105 for details and preferred meeting times.

## LW CLUBS, GROUPS and ACTIVITIES

CLUB	CONTACT	PHONE	EMAIL	TIME/DAY	LOCATION
Bayberry Garden Circle	Judy Watson	954-547-1007		10 AM 3 <sup>rd</sup> Thursday	Room 208
Cards	Sandy Spector	954-423-3293		1 PM Tue & Wed	Room 208
Ceramics	Anne Karic	305-766-6462		7 PM Wednesday	Room 106
Hadassah	Susan Rose	954-424-8494	mssrose@aol.com	11:30 AM 3 <sup>rd</sup> Tuesday	JBA
Kalookie	Carmen Delisser	754-235-4518	carmendelisser@yahoo.com	7-9:30 PM Friday	Room 208
Low Impact Exercise	Linda Hofstetter	954-632-1752		9-10 AM Mon thru Fri	Room 111
LW Social Club	Steve Taylor	954-473-8233		Noon 3 <sup>rd</sup> Sunday	JBA
Mah Jongg	Bobbie Kalkstein	954-472-5566		Noon Friday	Room 206
Ping Pong	Stu Sosniak	954-881-1875		Call for Pickup Game	Room 207
Poker Players	Joe Gillardi	954-475-1944			Room 208
Pool Players	Paul Wagner	954-778-0135		1-3 PM Mon & Fri	Pool Room 202
Pool Players	Paul Wagner	954-778-0135		7-9 PM Thursday	Pool Room 202
Scrapbooking Workshop	Cyndie Schmidt	843-452-4972	cynthiascrapbooks@gmail.com	10 AM 3 <sup>rd</sup> Thursday	Room 106
Sewing Circle	Shirley Jenkins	954-314-7318	or 516 376-8318 (c)	1 PM Monday	Room 106
Social Tennis	Sandy Roberts	954-260-0037	sandraroerts8531@gmail.com	9 AM Sun, Tue, Thur, Sat	Tennis Courts
Spanish Club	Aura Giron	321-412-1557		7 PM 2 <sup>nd</sup> Thursday	Room 113
Stained Glass	Brunia Duval	954-476-4226	bruniaduval@yahoo.com	1-3 PM Wed & Fri	Room 106
Women of LW, Inc.	Pinky Trapani	954-472-1652		11 AM 1 <sup>st</sup> Tuesday	JBA
Wood Shop	Steve Taylor	954-473-8233		9-Noon Mon thru Fri	Room 104
Yoga & Chair Yoga	Leila Maisa	954-662-4026	Immaisa@hotmail.com	1 PM Mon & Fri	Room 113

# HADASSAH *Happenings...*

*By Susan Rose, President - 954-288-8494 - Mssrose@aol.com*

The holidays are upon us. We have just had a wonderful Thanksgiving feast and for those of you who celebrate Hanukkah, Hanukkah is now in full swing. We are looking forward to our time getting together to celebrate the holidays with Hadassah. On December 7 we will have our Board Meeting. Everyone is welcome to join us. We are starting to plan for 2022 and would appreciate your input. On Tuesday, December 14, we would love for you to join us for lunch at Plantation Preserve at 11:30 AM. Everyone pays for their own lunch, and we each make a \$5 donation to Hadassah. It is a social time full of conversation and laughter. On December 21, we will have our General Meeting and installation of officers at 11:30 AM in the JBA. Everyone is welcome, but we need a reservation as we are ordering from Luv n Oven. We will have individual cheese pizzas with a small side salad, beverage and dessert. The charge is \$10 and must be reserved before December 16th. If you would like to participate in a gift exchange, please bring a wrapped \$5 gift. We will exchange with others who also bring gifts.

Some of you are aware that we started Mah Jong classes on Thursday evenings at 7 PM upstairs in Lauderdale West's clubhouse, Room 206. It is not too late to join us. There is a \$5 registration fee. Learn the National Mah Jong League's rules. We have players who have never played before and those who are refreshing their skills. We will continue lessons until the new cards come out in March-April 2022. If you need the 2022 card, call Beverly Farron at 954-292-1065. Standard print cards are \$9, large prints are \$10. Make checks payable to Hadassah along with which card you want in the memo section. We will welcome in the new year with a Board Meeting on January 4 at 9:30 AM. Sunday, January 9, we will have a fun afternoon of Bunco. Plan to join us at 2 PM. Everyone is guaranteed to be a winner. Every participant will get a prize. It's a time for laughter and meeting new people. Refreshments will be served. Where can you go for an afternoon of fun for only \$10? Be sure to make your reservation by calling Karen Pellegini at 954-205-1939, leave a message if there is no answer. We need to know ahead of time how many people will be there. RSVP by Jan 7. On January 11 we will have lunch bunch at Jacaranda Country Club at 11:30 AM. Everyone pays for their own lunch, and we each make a \$5 donation to Hadassah.

January 18th we are Celebrating all our members, new and returning, with a Gala Luncheon catered by Diamond Caterers. More information will be coming, and reservations are required. Choices will be Stuffed Cabbage, Chicken Marsala, or Salmon served with sides. Dessert and beverage will be included. The cost will be \$36 per person, but it will be well worth it. Invite your friends and family. We are so looking forward to 2022 getting off to a great start.

You can become as active as you like. We are always looking for new ideas for activities and fund-raising. We need you! Give me a call if you have any questions. Everyone is welcome. Susan Rose 954-288-8494, be sure to leave a message.



## CANDLE WITH CARE

*From AAA Living Nov/Dec 2021*

If decorating with candles is part of your holiday festivities, be sure to treat those candles with extra care. Half of the home decoration fires in December are started by candles, according to the Federal Emergency Management Agency.

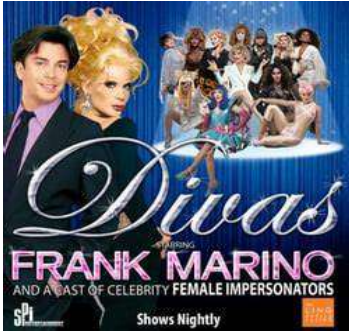
- Extinguish candles when you leave the room or go to bed. (More than a third of home candle fires start in the bedroom.)
- Use a sturdy candleholder that won't tip over easily.
- Extinguish a candle before the flame gets too close to the bottom of the holder or container.
- Keep candles at least 1 foot away from anything that can burn.
- Keep hair and loose clothing away from candle flames.

# TICKET PRICES FOR THE JANUARY SHOW

## Residents - \$17    Guests - \$22

### Frank Marino's Divas of Las Vegas

### January 15, 2022      8:00PM



This energetic show starring Las Vegas' longest running headliner Frank Marino as comic icon Joan Rivers features an all-star cast of superstar female impersonators who not only recreate but almost uncannily duplicate the likenesses of stars ranging from Britney Spears to Cher and Diana Ross to Beyonce and even Madonna and Dolly Parton.

**Tickets Sales Begin December 20**

## TICKET OFFICE



- The ticket office is open Monday through Friday, 9:30 AM to 11:30 AM.
- The ticket office is open the night of the show from 6:30 PM to 7:30 PM.
- Reserved seat tickets **MUST** be picked up the first week of ticket sales or they will go into "general" sales the following week.

**RESERVED**

## SEATS ARE AVAILABLE FOR LIVE SHOWS

Reserved seating is available for all Lauderdale West residents for the live shows. Check with staff in the ticket office to reserve specific seats for the shows. They will be able to identify which seats are available. You don't pay for the tickets until you pick them up for the show. No extra charge: they are the same low price of \$10 for residents. This allows you to have the same seats for all the great shows.

Simply the best Handyman Services Inc.  
(servicing Lauderdale West since 1999)

Handyman Licence # 165011

Just call Kenny  
PHONE: (954)-655-7061

T.M.  
**RALPH**  
FUNERAL HOMES

FAMILY OWNED AND  
OPERATED SINCE 1965  
"YOUR LOCAL FUNERAL HOME"

*Local and Out of State Burial*

*Cremation Arrangements*

*Providing Service to All Faiths*



Thomas M. Ralph ♦ Judith C. Ralph  
Owners and Directors

Plantation Funeral Home  
7001 NW 4th Street  
Plantation, FL 33317

Also located at:  
Sawgrass / Weston  
371 NW 136th Avenue  
Sunrise, FL 33325  
(954) 587-6888

www.tmralfh.com

Online funeral information and Prearrangements

<b>Wednesday</b>	<b>Thursday</b>	<b>Friday</b>	<b>Saturday</b>
 <p><b>EPIPHANY</b></p>	 <p><b>MARTIN LUTHER KING DAY</b></p>	 <p><b>HOLOCAUST REMEMBRANCE DAY</b></p>	<p><b>1</b> New Year's Day Satl 9 am SocialTennis</p>
<p><b>5</b> National Bird Day</p> <p>111 9-10 am Low Impact Exercise 104 9-12 Wood Shop 106 1 pm Stained Glass 208 1 pm Cards BC 6:00 pm Bocce 106 7 pm Ceramics</p>	<p><b>6</b> Epiphany</p> <p>111 9-10 am Low Impact Exercise 104 9-12 Wood Shop Satl 9 am Social Tennis 113 9:30-10:30 am Blood Pressure 208 10:30 am Cards 202 7-9 pm Pool Playing</p>	<p><b>7</b> Orthodox Christmas Day</p> <p>111 9-10 am Low Impact Exercise 104 9-12 Wood Shop 206 12-4 pm Mah Jongg 106 1 pm Stained Glass 113 1-2 pm Yoga and Chair Yoga 202 1-3 pm Pool Playing 208 7 pm Kalookie</p>	<p><b>8</b> V-E Day</p> <p>Satl 9 am SocialTennis</p>
<p><b>12</b> Kiss a Ginger Day</p> <p>111 9-10 am Low Impact Exercise 104 9-12 Wood Shop 106 1 pm Stained Glass 208 1 pm Cards BC 6:00 pm Bocce 106 7 pm Ceramics</p>	<p><b>13</b> Leprechaun Day</p> <p>111 9-10 am Low Impact Exercise 104 9-12 Wood Shop Satl 9 am Social Tennis 113 9:30-10:30 am Blood Pressure 208 10:30 am Cards 202 7-9 pm Pool Playing 113 7 pm Spanish Club</p>	<p><b>14</b> Orthodox New Year</p> <p>111 9-10 am Low Impact Exercise 104 9-12 Wood Shop 206 12-4 pm Mah Jongg 106 1 pm Stained Glass 113 1-2 pm Yoga and Chair Yoga 202 1-3 pm Pool Playing 208 7 pm Kalookie</p>	<p><b>15</b> National Hat Day</p> <p>Satl 9 am SocialTennis</p> <p><b>FRANK MARINO'S DIVAS LAS VEGAS</b></p> <p>8:00 PM.- JBA \$17 Residents - \$22 Guests ID Required</p>
<p><b>19</b> National Popcorn Day</p> <p>111 9-10 am Low Impact Exercise 104 9-12 Wood Shop 106 1 pm Stained Glass 208 1 pm Cards BC 6:00 pm Bocce 106 7 pm Ceramics <b>113 7 pm Lw Board Meeting</b></p>	<p><b>20</b> Pick Strawberries Day</p> <p>111 9-10 am Low Impact Exercise 104 9-12 Wood Shop Satl 9 am Social Tennis 113 9:30-10:30 am Blood Pressure 106 10-3 Scrapbooking 205 10 am Bayerry Garden Circle 208 10:30 am Cards 202 7-9 pm Pool Playing</p>	<p><b>21</b> National Hug Day</p> <p>111 9-10 am Low Impact Exercise 104 9-12 Wood Shop 206 12-4 pm Mah Jongg 106 1 pm Stained Glass 113 1-2 pm Yoga and Chair Yoga 202 1-3 pm Pool Playing 208 7 pm Kalookie</p>	<p><b>22</b> National Maritime Day</p> <p>Satl 9 am SocialTennis</p>
<p><b>26</b> National Spouse Day</p> <p>111 9-10 am Low Impact Exercise 104 9-12 Wood Shop 106 1 pm Stained Glass 208 1 pm Cards BC 6:00 pm Bocce 106 7 pm Ceramics</p>	<p><b>27</b> Holocaust Remembrance Day</p> <p>111 9-10 am Low Impact Exercise 104 9-12 Wood Shop Satl 9 am Social Tennis 113 9:30-10:30 am Blood Pressure 208 10:30 am Cards 202 7-9 pm Pool Playing</p>	<p><b>28</b> Data Privacy Day</p> <p>111 9-10 am Low Impact Exercise 104 9-12 Wood Shop 206 12-4 pm Mah Jongg 106 1 pm Stained Glass 113 1-2 pm Yoga and Chair Yoga 202 1-3 pm Pool Playing 208 7 pm Kalookie</p>	<p><b>29</b> Kiss of Hope Day</p> <p>Satl 9 am SocialTennis</p>

**JANUARY 2022**

**2021**



**D  
E  
C  
E  
M  
B  
E  
R**



Flower Of The Month:  
POINSETTIA

<b>Sunday</b>	<b>Monday</b>	<b>Tuesday</b>
<p>PLEASE NOTE</p> <p>Since this calendar must be prepared weeks in advance, there may be last-minute changes. We suggest you verify dates on In-House Channel 901.</p> <p>Revised 11-22-2021</p>	<p>KEY TO LOCATIONS</p> <p>BC = Bocce Court EXT = Outside of Lw JBA = Auditorium LIB = Library SATL = Satellite TO = Ticket Office</p>	
<p><b>5</b> Repeat Day</p> <p>Satl 9 am Social Tennis</p>	<p><b>6</b> Mitten Tree Day</p> <p>111 9-10 am Low Impact Exercise 104 9-12 Wood Shop 108 1 pm Sewing Circle 202 1-3 pm Pool Playing 208 7 pm Cards</p>	<p><b>7</b> Pearl Harbot Day</p> <p>111 9-10 am Low Impact Exercise 104 9-12 Wood Shop Satl 9 am Social Tennis 113 9:30 am Hadassah Board Mtg JBA 11 am Women of LW, Inc 208 1 pm Cards</p>
<p><b>12</b> National Poinsettia Day</p> <p>Satl 9 am Social Tennis</p> <p><b>HOLIDAY PARTY</b> 5:30-7:30 PM - Room 113</p>	<p><b>13</b> Ice Cream Day</p> <p>111 9-10 am Low Impact Exercise 104 9-12 Wood Shop 108 1 pm Sewing Circle 202 1-3 pm Pool Playing 208 7 pm Cards</p>	<p><b>14</b> Roast Chestnuts Day</p> <p>111 9-10 am Low Impact Exercise 104 9-12 Wood Shop Satl 9 am Social Tennis 104 Noon LW Social Club Bd Mtg 208 1 pm Cards</p> <p><b>BULK PICKUP</b></p>
<p><b>19</b> Look for an Evergreen Day</p> <p>Satl 9 am Social Tennis JBA Noon LW Social Club</p>	<p><b>20</b> Go Caroling Day</p> <p>111 9-10 am Low Impact Exercise 104 9-12 Wood Shop <b>TO 9:30-11:30 Ticket Office Open</b> 108 1 pm Sewing Circle 202 1-3 pm Pool Playing 208 7 pm Cards</p>	<p><b>21</b> Winter Solstice</p> <p>111 9-10 am Low Impact Exercise 104 9-12 Wood Shop Satl 9 am Social Tennis JBA 11:30 am Hadassah Gen Mtg 208 1 pm Cards</p>
<p><b>26</b> Kwanzaa Begins</p> <p>Satl 9 am Social Tennis</p>	<p><b>27</b> National Fruitcake Day</p> <p>111 9-10 am Low Impact Exercise 104 9-12 Wood Shop 108 1 pm Sewing Circle 202 1-3 pm Pool Playing 208 7 pm Cards</p>	<p><b>28</b> Boxing Day</p> <p>111 9-10 am Low Impact Exercise 104 9-12 Wood Shop Satl 9 am Social Tennis 113 10 am Women of LW Bd Mtg 208 1 pm Cards</p>



<b>Wednesday</b>	<b>Thursday</b>	<b>Friday</b>	<b>Saturday</b>
<p><b>1</b> Eat a Red Apple Day</p> <p>111 9-10 am Low Impact Exercise 104 9-12 Wood Shop 113 9:30-11:30 PartyTime Ticket Sales Begin 106 1 pm Stained Glass 208 1 pm Cards BC 6:30 pm Bocce 106 7 pm Ceramics</p>	<p><b>2</b> National Fritters Day</p> <p>111 9-10 am Low Impact Exercise 104 9-12 Wood Shop Satl 9 am Social Tennis 113 9:30-10:30 am Blood Pressure 208 10:30 am Cards 202 7-9 pm Pool Playing</p>	<p><b>3</b> National Roof Over Your Head Day</p> <p>111 9-10 am Low Impact Exercise 104 9-12 Wood Shop 206 Noon Mah Jongg 106 1 pm Stained Glass 113 1-2 pm Yoga &amp; Chair Yoga 202 1-3 pm Pool Playing 208 7 pm Kalookie</p>	<p><b>4</b> Santa's List Day</p> <p>Satl 9 am Social Tennis</p> <p><b>DANCING DREAM</b></p> <p><b>8:00 PM - JBA</b> <b>\$10 Residetns - \$17 Guests</b> <b>ID Required</b></p>
<p><b>8</b> National Brownie Day</p> <p>111 9-10 am Low Impact Exercise 104 9-12 Wood Shop 106 1 pm Stained Glass 208 1 pm Cards BC 6:30 pm Bocce 106 7 pm Ceramics</p>	<p><b>9</b> Christmas Card Day</p> <p>111 9-10 am Low Impact Exercise 104 9-12 Wood Shop Satl 9 am Social Tennis 113 9:30-10:30 am Blood Pressure 106 10-3 Scrapbooking 208 10:30 am Cards 202 7 pm Pool Playing 113 7-9 pm Spanish Club</p>	<p><b>10</b> Human Rights Day</p> <p>111 9-10 am Low Impact Exercise 104 9-12 Wood Shop 206 Noon Mah Jongg 106 1 pm Stained Glass 113 1-2 pm Yoga &amp; Chair Yoga 202 1-3 pm Pool Playing 208 7 pm Kalookie</p>	<p><b>11</b> National Noodle Ring Day</p> <p>Satl 9 am Social Tennis</p>
<p><b>15</b> Bill of Rights Day</p> <p>111 9-10 am Low Impact Exercise 104 9-12 Wood Shop <b>113 10 am LW Board Meeting</b> 106 1 pm Stained Glass 208 1 pm Cards BC 6:30 pm Bocce 106 7 pm Ceramics</p>	<p><b>16</b> National Chocolate Covered Anything Day</p> <p>111 9-10 am Low Impact Exercise 104 9-12 Wood Shop Satl 9 am Social Tennis 113 9:30-10:30 am Blood Pressure 205 10 am Bayberry Garden Circle 208 10:30 am Cards 202 7-9 pm Pool Playing</p>	<p><b>17</b> National Maple Syrup Day</p> <p>111 9-10 am Low Impact Exercise 104 9-12 Wood Shop 206 Noon Mah Jongg 106 1 pm Stained Glass 113 1-2 pm Yoga &amp; Chair Yoga 202 1-3 pm Pool Playing 208 7 pm Kalookie</p>	<p><b>18</b> Bake Cookies Day</p> <p>Satl 9 am Social Tennis</p>
<p><b>22</b> National Date Nut Bread Day</p> <p>111 9-10 am Low Impact Exercise 104 9-12 Wood Shop 106 1 pm Stained Glass 208 1 pm Cards BC 6:30 pm Bocce 106 7 pm Ceramics</p>	<p><b>23</b> Festivus</p> <p>111 9-10 am Low Impact Exercise 104 9-12 Wood Shop Satl 9 am Social Tennis 113 9:30-10:30 am Blood Pressure 113 9:30-11:30 PartyTime Ticket Sales END 208 10:30 am Cards 202 7-9 pm Pool Playing</p>	<p><b>24</b> National Chocolate Day</p> <p>111 9-10 am Low Impact Exercise 104 9-12 Wood Shop 206 Noon Mah Jongg 106 1 pm Stained Glass 113 1-2 pm Yoga &amp; Chair Yoga 202 1-3 pm Pool Playing 208 7 pm Kalookie</p> <p><b>BUSINESS OFFICES CLOSED</b> <b>MAINTENANCE CLOSED</b> <b>CLUBHOUSE OPEN</b></p>	<p><b>25</b> Christmas Day</p> <p>Satl 9 am Social Tennis</p> 
<p><b>29</b> Pepper Pot Day</p> <p>111 9-10 am Low Impact Exercise 104 9-12 Wood Shop 106 1 pm Stained Glass 208 1 pm Cards BC 6:30 pm Bocce 106 7 pm Ceramics</p>	<p><b>30</b> Bacon Day</p> <p>111 9-10 am Low Impact Exercise 104 9-12 Wood Shop Satl 9 am Social Tennis 113 9:30-10:30 am Blood Pressure 208 10:30 am Cards 202 7-9 pm Pool Playing</p>	<p><b>31</b> New Year's Eve</p> <p>111 9-10 am Low Impact Exercise 104 9-12 Wood Shop 206 Noon Mah Jongg 106 1 pm Stained Glass 113 1-2 pm Yoga &amp; Chair Yoga 202 1-3 pm Pool Playing 208 7 pm Kalookie</p> <p><b>NEW YEAR'S EVE PARTY</b></p> <p><b>8:00PM - 12:30 AM - JBA</b> <b>Price \$25</b></p>	





**D  
E  
C  
E  
M  
B  
E  
R  
  
2  
0  
2  
1**

**2022**

**J  
A  
N  
U  
A  
R  
Y**



Flower Of The Month:  
**CARNATION**

<b>Sunday</b>	<b>Monday</b>	<b>Tuesday</b>
<p>PLEASE NOTE</p> <p>Since this calendar must be prepared weeks in advance, there may be last-minute changes. We suggest you verify dates on In-House Channel 8001.</p> <p>Revised 11-22-2021</p>	<p>KEY TO LOCATIONS</p> <p>BC = Bocce Court EXT = Outside of Lw JBA = Auditorium LIB = Library SATL = Satellite TO = Ticket Office</p>	
<p><b>2</b> Brothers &amp; Sisters Day</p> <p>Satl 9 am Social Tennis</p> 	<p><b>3</b> Garden Meditation Day</p> <p>111 9-10 am Low Impact Exercise 104 9-12 Wood Shop 106 1 pm Sewing Circle 202 1-3 pm Pool Playing 208 7 pm Cards</p>	<p><b>4</b> World Braille Day</p> <p>111 9-10 am Low Impact Exercise 104 9-12 Wood Shop Satl 9 am Social Tennis 113 9:30 am Hadassah Board Mtg JBA 11 am Women of LW, Inc. 208 1 pm Cards</p>
<p><b>9</b> Law Enforcement Appreciation Day</p> <p>Satl 9 am Social Tennis</p> 	<p><b>10</b> Clean up Your Room Day</p> <p>111 9-10 am Low Impact Exercise 104 9-12 Wood Shop 106 1 pm Sewing Circle 202 1-3 pm Pool Playing 208 7 pm Cards</p>	<p><b>11</b> Human Trafficking Awareness Day</p> <p>111 9-10 am Low Impact Exercise 104 9-12 Wood Shop Satl 9 am Social Tennis 208 1 pm Cards</p> <p><b>BULK PICKUP</b></p>
<p><b>16</b> Appreciate a Dragon Day</p> <p>Satl 9 am Social Tennis</p> 	<p><b>17</b> Martin Luther King Day</p> <p>111 9-10 am Low Impact Exercise 104 9-12 Wood Shop 106 1 pm Sewing Circle 202 1-3 pm Pool Playing 208 7 pm Cards</p>	<p><b>18</b> Winnie the Pooh Day</p> <p>111 9-10 am Low Impact Exercise 104 9-12 Wood Shop Satl 9 am Social Tennis JBA 11:30 am Hadassah Gen Mtg 208 1 pm Cards</p>
<p><b>23</b> National Pie Day</p> <p>Satl 9 am Social Tennis</p> <p>Satl 9 am Social Tennis National Croissant Day <b>30</b></p>	<p><b>24</b> National Compliment Day</p> <p>111 9-10 am Low Impact Exercise 104 9-12 Wood Shop 106 1 pm Sewing Circle 202 1-3 pm Pool Playing 208 7 pm Cards</p> <p><b>TO 9:30 Ticket Office Open</b> Hot Chocolate Day <b>31</b></p>	<p><b>25</b> Robert Burns Night</p> <p>111 9-10 am Low Impact Exercise 104 9-12 Wood Shop Satl 9 am Social Tennis 113 10 am Women of LW Bd Mtg 208 1 pm Cards</p>

# ENTERTAINMENT



## DANCING DREAM

**(ABBA TRIBUTE BAND)**

**December 4, 2021**

This tribute act will take you back to the days when Swedish disco group ABBA ruled the music world with their great pop hits and memorable performances. Their music is still so popular and alive and resonates with audiences of all ages!

Come experience the glitter and glamour of the 70's! This band takes pride in being able to honor the fantastic performers of the original Swedish music group, ABBA!

## FRANK MARINO'S DIVAS OF LAS VEGAS

**January 15, 2022**

**\$17 Residents - \$22 Guests**

This energetic show starring Las Vegas' longest running headliner Frank Marino as comic icon Joan Rivers features an all-star cast of superstar female impersonators who not only recreate but almost uncannily duplicate the likenesses of stars ranging from Britney Spears to Cher and Diana Ross to Beyonce and even Madonna and Dolly Parton.



### LIVE ENTERTAINMENT 2022

SHOW DATE	ENTERTAINMENT	TICKET SALES BEGIN
Jan. 15	<b>Frank Marino's Divas Las Vegas</b> <i>Female Impersonators</i> \$17 Residents - \$22 Guests	Dec. 20
Feb. 26	<b>Vocal Trash</b> <i>Singing, comedy, breakdancing &amp; more</i>	Jan. 31
Mar. 19	<b>Johnny Rogers Trio</b> <i>Buddy Holly and Beyond</i>	Feb. 22
Apr. 30	<b>ARIA (Aussies Reunited in America)</b> <i>A blend of pop with a sprinkle of opera</i>	Apr. 04
May 14	<b>Gary DeLena &amp; Diane DeNoble</b> <i>Singing, dancing, comedy</i>	May 02
Jun. 11	<b>Love is a Rose</b> <i>Music of Linda Ronstadt</i>	May 16
Oct. 15	<b>Motown Magic</b> <i>The Temptations, Marvin Gaye &amp; more</i>	Sep. 19

*\*Note: Reserved seat must be purchased the first week of ticket sales*

### SHOW TICKETS:

LW ID is required to purchase tickets

**NO SHORTS  
NO HATS  
NO PICTURES/VIDEO  
PERMITTED**

Check PREFERRED –  
No credit cards  
Will accept cash  
No refunds or credit issued  
LW Bus is available for transportation to the shows in the Joe Byer Auditorium (JBA)



## HOW WE PASSED THE BUDGET IN PLANTATION

*By Nick Sortal, Plantation Councilmember*

The most important task a City Council is charged with is approving a budget each year. We signed off for expenditures from Oct. 1, 2021, to Sept. 30, 2022, at our September 17 meeting.

### **How big is Plantation's budget?**

This year it is \$217 million. Our General Fund, which is the money for the nuts and bolts, is \$114.5 million.

### **How is it created?**

We get started in early March. We allow each department – such as Utilities, Parks, Public Works, etc. – to increase their operating budget only by up to 2.5%, which roughly matches historical averages in operating costs and inflation indexes. And this year, their increase was only 1.8%.

All those requests are combined by the mayor's office, which puts the final touch on how much we expect to collect and how much we expect to spend. (We also have about \$42 million set aside for emergencies, such as hurricanes.)

The city council has the final say. We did a first passage on Sept. 8 and a second on Sept. 17, in compliance with state-defined procedures.

### **OK, quit messing around. Will my taxes go up?**

Probably about \$50 from the city side of things. We voted to keep the millage rate at 5.800, but your property value likely increased. My home was assessed at \$253K in 2020, and \$257K in 2021. That difference of \$4,250, times 5.80 per thousand, equals \$24.59.

### **Are my taxes the lone source of city revenues?**

Property taxes account for just over half of this year's general fund budget (\$59.5 million). The rest comes from revenue sharing for sales tax, charges for services (\$16.5 million), permit fees and special assessments (\$10.4 million) and other sources.

### **What about my overall tax bill?**

The ad valorem city tax is about 30 percent of your tax bill, with county and school taxes accounting for similar amounts. My \$5,484.63 tax bill for example, includes \$1,418 to the county and \$1,007 to the school board. So, it's not entirely our fault.

### **What are the major expenditures in Plantation?**

Police and fire accounts for almost 60 percent of our \$114.5 million general budget. Our police budget is in line with most cities. Our fire department saves us greatly because we have volunteers instead of paid staffers. Some estimates place it at \$40 million a year, although others argue it is even more.

### **All this sounds, well, almost boring.**

We are a pretty no-drama city. Our department heads know the parameters and sift through the requests to needs, not wants. City council members are asked early in the process if they have any priorities, some of which are factored in, some of which are not. (Mine, for example, included making sure we don't scrimp on computer security, to thwart cyber-hacking.)

### **I'm a geek. I want more. Give me some links.**

Go to <https://www.plantation.org/government/mayor/city-budget>.




**CITY OF PLANTATION  
2021 and 2022  
CITY COUNCIL MEETINGS**

Plantation City Council meetings are usually held the 2nd and 4th Wednesday beginning at **6:00 PM** with a workshop followed by the meeting at **7:00 PM**. Periodically, meetings may be cancelled, or special meetings may be held. Please call the City Clerk’s Office at City Hall to verify (954-797-2237).

**CITY COUNCIL MEETINGS  
December 8, 2021**

**January 12, 2022  
January 26, 2022**

Residents are being asked, however not required, to wear masks when attending public meetings or hearings. Examples of public meetings include City Council meetings and Planning & Zoning Advisory Board meetings.



You need a City of Plantation permit to make any plumbing or electrical changes. Don't forget you also need to complete the paperwork with our Director in charge of modifications, Kristi Woods. A permit ensures a plumbing or electrical change is done properly – to code. It is for your protection.

**FYI BY  
PLANTATION  
CODE**



**Plantation, FL** – The 2021-22 Rock the Park Concert series are free, outdoor, live musical events held on the first Friday of every month, November through April. The events take place at Plantation Central Park’s ball fields, located at 600 Central Park Drive. Each event features live music by a local band and food trucks. The trucks start serving at 6:00 p.m. and the music begins at 7:00 p.m.

Participants are encouraged to bring their blankets and/or lawn chairs to set on the lawn while they enjoy tunes outdoors. The line-up of bands is as follows:

Friday, December 3, 2021  
**Turnstiles**  
(Billy Joel Tribute Band)

Friday, January 7, 2022  
**Yacht Rock**  
(70’s, 80’s & Soft Rock)

Friday, February 4, 2022  
**Southern Blood**  
(Southern Rock)

Friday, March 4, 2022  
**Higher Ground**  
(Top 40/Dance/Rock)

Friday, April 1, 2022  
**Havoc 305**  
(Premiere Top 40 Cover Band)

This is a great and fun outdoor event for residents and visitors to enjoy. For more information please call (954) 452-2510.

**A SPECIAL MESSAGE FROM THE PLANTATION POLICE DEPARTMENT**

The Plantation Police Department continues to inform us of incidents in our area where people have knocked on doors purporting to be various vendors seeking entry into our home. When allowed access to the home, they may rob the resident.

They have also informed us of the theft of items stored on patios. Please **DO NOT** leave valuable items outside. Make sure your home and vehicle are always locked. These are difficult times and we must be aware of our person, surroundings, and valuables.

**PLEASE DO NOT OPEN YOUR DOOR TO STRANGERS. AND CERTAINLY, DO NOT LET THEM INTO YOUR HOME. DO NOT LEAVE VALUABLES UNSECURED.**

**Dare to Dream...**  
TURNING YOUR DREAMS  
INTO "REALTY" FOR 34 YEARS!

**THE  
ABRAHAM  
TEAM**  
954.802.0444

***WE KNOW YOUR MARKET!***  
***WE KNOW YOUR MODEL!***  
***BECAUSE WE LIVE HERE!***

ASK THE EXPERTS IN LAUDERDALE WEST  
CALL HARVEY & CHARLOTTE NOW!  
**954-802-0444**

***Don't Make a Move Without Us!***



**kw**  
KELLER WILLIAMS LEGACY  
Each office is independently owned and operated.

**Harvey & Charlotte Abraham**



# FROM SOCIAL SECURITY ADMINISTRATION

## View your new benefit amount

Approximately 70 million Americans will see a 5.9% increase in their Social Security benefits and Supplemental Security Income (SSI) payments in 2022.

## Cost-of-Living Adjustment (COLA) notices

We will mail Cost-of-Living Adjustment (COLA) notices throughout the month of December to retirement, survivors, and disability beneficiaries, SSI recipients, and representative payees.

## Want to know your new benefit amount before your notice arrives?

**Starting in early December**, you will be able to securely view and save your Social Security COLA notice online via the Message Center inside [my Social Security](#).

*\*Benefit amounts will not be available before December.*

## my Social Security

### Sign up for notifications!

Make sure you are signed up for notifications from the [my Social Security](#) Message Center by choosing email or text under "Message Center Preferences." With convenient access to your COLA notice online, you don't need to contact us to get your new benefit amount.

## Create your personal my Social Security account today

A free and secure [my Social Security](#) account provides personalized tools for everyone, whether you receive benefits or not. You can use your account to request a replacement Social Security card, check the status of an application, estimate future benefits, or manage the benefits you already receive. All from anywhere!



## Don't miss out on all the fun at LW!

Make sure you get your tickets at the Clubhouse in advance of the event.

### December Events

- Dec 4 Live Show in JBA – Dancing Dream – 8:00 PM
- Dec 7 Women of Lauderdale West, Inc in JBA – 11:00 AM
- Dec 12 Holiday Party om Room 113 – 5:30-7:30 PM
- Dec 19 LW Social Club Brunch in JBA – Noon
- Dec 20 Ticket Office Open for January Show – 9:30-11:30 AM
- Dec 21 Hadassah in JBA – 11:30 AM
- Dec 31 New Year's Eve Party in JBA- 8:00 PM – 12:30 AM

### January Events

- Jan 4 Women of Lauderdale West, Inc in JBA – 11:00 AM
- Jan 15 Live Show in JBA – Frank Marino's Divas of Las Vegas – 8:00 PM
- Jan 18 Hadassah in JBA – 11:30 AM
- Jan 31 Ticket Office Open for February Show – 9:30-11:30 AM

### February Events

- Feb 1 Women of Lauderdale West, Inc in JBA – 11:00 AM
- Feb 12 Valentine's Day Party in JBA – 7:30-11:30 PM
- Feb 15 Hadassah in JBA – 11:30 AM
- Feb 26 Live Show in JBA – Vocal Trash – 8:00 PM



**SIGNS** of any kind, are **NOT** permitted on Lauderdale West property, except during elections. Candidates' signs may be erected 10 days prior to an election and must be removed within 7 days after an election. Lauderdale West property includes all areas outside your home. This includes any grassy areas, your driveway, any public area, including stop signs, trees, and utility poles. Signs for Open Houses, Garage Sales, Parties, Greetings, etc. **are not allowed.**

**Signs will be removed, and the owner will be subject to fines.**

## New USPS service standards may add delivery time for important documents and payments.

### Have you heard?

The United States Postal Service (USPS) has revised its service standards for certain First-Class Mail items, adding one to two additional days for mail traveling longer distances. These changes took place beginning October 1.

Please keep this in mind for anything sent to you, or that you may send to anyone, via mail. This may include monthly bills, statements and payments, to name a few.

### Your financial institution's online banking can help you:

- Ensure bills are paid on time, in one secure place with bill pay.
- Move money where you need it, when you need it.
- Receive statements and documents sooner than if delivered by mail.



## The 7 Steps to Responsible Recycling

### Here are 7 rules to live by:

1. **"EMPTY AND CLEAN IF YOU WANT TO BE GREEN"**  
Do not contaminate other recycling materials with food particles and liquids. This can damage containers and make them unfit to be recycled.
2. **"DON'T BAG RECYCLABLES"**  
Only put loose items into recycling bag. The recycling facility does not have time to untie bags, so they will be sent to the landfill.
3. **"COATED PAPER CAUSES PROBLEMS"**  
Waxy paper cups and shiny or sparkly gift bags are examples of coated paper. If they have been treated or coated, they cannot be recycled.
4. **"GREASE IS GROSS"**  
Oil and water don't mix; when the grease from your recyclables transfers to other paper goods, it can spoil the batch of mulch at the paper mill. Parts soiled by grease should be cut out of paper materials. Toss only clean cardboard into recycling.
5. **"IF IT TANGLES, THEN IT MANGLES"**  
Tanglers are items that can get stuck in the equipment at a recycling facility. Don't recycle ropes, strapping, zip-ties, hoses, wires, chains, cords.
6. **"DON'T BE A DANGEROUS DUMPER"**  
Certain items can be dangerous when mixed with recycling: batteries, light bulbs, medications and lighter fluids are examples of unsafe items.
7. **"IF IN DOUBT, THROW IT OUT"**  
Do not add to the financial and environmental cost of trucking garbage from recycling facilities to landfills.

**SIX WAYS  
TO AVOID  
MAKING  
YOUR  
KIDS  
ANGRY!**

## ESTATE PLANNING MADE EASY ...

1. Durable Power of Attorney
2. Health Care Surrogate
3. Last Will & Testament
4. Revocable Trust
5. Probate
6. Deeds

**Reasonable  
Fee Packages**



OVER 30 YEARS EXPERIENCE

8201 Peters Rd.  
Suite 1000  
Plantation, FL

**954.249.7401**  
[gstern@bellsouth.net](mailto:gstern@bellsouth.net) • [www.gloriasternlaw.com](http://www.gloriasternlaw.com)

The hiring of an attorney is an important decision that should not be based solely upon advertisements. Before you decide, ask us to send you free written information about our qualifications and experience.



# Prestige Impact Windows & Doors

A DBA of Prestige Construction Engineering Group, LLC



# Prestige

Construction Engineering Group LLC

CGC-1516472 / CA-31258

1931 NW 150 Ave., Suite 208  
Pembroke Pines, FL 33028

**954-961-5300**



## 100% Financing Available!

5% Discount with  
complete windows  
& doors replacement  
project!



Structural issues with your family  
room or den? **We can Help!**



## Free Engineering Plans with all Project by Prestige

Lauderdale West References Available!

**954-961-5300**

[info@prestigeceng.com](mailto:info@prestigeceng.com)

CGC-1516472 / CA-31258



Since 1980

# 24-HOUR EMERGENCY SAME DAY SERVICE

## PLUMBING EMERGENCY? DEPEND ON US!



**\$50 OFF**  
Clearing of Any Sink, Toilet or Sewer Drain

**\$85 OFF**  
Any Rheem Water Heater Installation

**\$45 OFF**  
Any Toilet Repair

**\$40 OFF**  
Any Garbage Disposal Installation



**100% FINANCING** on Rheem Water Heaters\*  
18 MONTHS SAME AS CASH

All discounts taken off the regular rate of work. Coupons and other specials cannot be combined. Must mention this ad at time of service.  
*\*If qualified for financing*

**Complete Plumbing Service & Repairs**  
Sewer & Drain Cleaning • Toilets  
Faucets & Sinks • Water Filters • Disposals  
Pipe Repair & Replacements • Water Heaters • Shower Pans

**WATER HEATERS STARTING AT \$12 PER MON.**

**WEST END PLUMBING**  
954-741-5271  
WestEndPlumbing.com

STATE LICENSED & INSURED • CFC1427334

# BEAT THE FLORIDA HEAT!

## A/C INSTALLATIONS, SERVICE & MAINTENANCE



**WE SERVICE ALL MAKES & MODELS**

- RUUD**
- American Standard
- Rheem
- Carrier
- Goodman
- TRANE
- Amana

**A/C CHECK-UP ONLY \$29.95**

- System Diagnostic
- Check Thermostat Operation
- Freon Level & Leak Check
- Up to 1 lb. R410A Freon (As Needed)
- Check Evaporator & Condenser Coils

**FREE**  
Estimate on Any New A/C Installation

**FREE**  
Service Call With Work Completed

**\$200 OFF**  
Any New Complete A/C System Installation

**\$25 OFF**  
Any Freon Re-Charge

**WEST END AIR CONDITIONING**  
954-741-5271  
WestEndAir.com

**100% FINANCING AVAILABLE\***  
ON NEW A/C UNITS

**Complete A/C Service & Repairs**  
New A/C Unit Installations • System Tune-Ups  
Drain Line & Pan Cleaning • Refrigerant Checks  
Condenser & Evaporator Coil Cleaning • A/C Filters

All discounts taken off the regular rate of work. Coupons and other specials cannot be combined. Must mention this ad at time of service.  
*\*If qualified for financing*

Licensed & Insured • CAC036868



8211 West Broward Blvd.  
Suite #PH1 - Fifth Floor  
Plantation, FL 33324

Tel: 954.577.9700  
Fax: 954.475.1897

Fax to 954-475-1897

Or email to

[customerservice@homeownercpa.solutions](mailto:customerservice@homeownercpa.solutions)

### Maintenance Fee Auto Debit Authorization

Association Name: \_\_\_\_\_

Name on Deed: \_\_\_\_\_

Property Address: \_\_\_\_\_

Mailing Address: \_\_\_\_\_

Name of Bank : \_\_\_\_\_

(US Bank Only)

Name on Bank Account: \_\_\_\_\_

Home Phone: \_\_\_\_\_ Daytime Phone: \_\_\_\_\_

Email Address: \_\_\_\_\_

I have included a **Blank Voided Check** and hereby authorize my financial institution to debit my account in the name of my Condominium or Homeowners Association. I understand the debit will appear on my bank statement under the description of **“Association Lock Box.”** between the 5<sup>th</sup> and the 10<sup>th</sup> day of each month, if a monthly assessment, or between the 5<sup>th</sup> and 10<sup>th</sup> day of the first month of the quarter, if a quarterly assessment. In addition, **I understand this auto debit will continue until I notify my association in writing 30 days prior to canceling or changing the bank account used for the auto debit.** I also give the association authority to change the auto debit, as maintenance fees are changed by the Board of Directors, in future years.

**PLEASE ATTACH A BLANK VOIDED CHECK TO THIS FORM**

Return this form by the 21st of the month PRIOR to start month.

Start Month & Year: \_\_\_\_\_

Assessment Frequency: \_\_\_\_ Monthly

Maintenance Fee: \$ \_\_\_\_\_ Special Assessment: \$ \_\_\_\_\_ Other \$ \_\_\_\_\_

Describe: \_\_\_\_\_

You will be sent a letter confirming the month EFT will start.

#### ACCOUNT MUST BE CURRENT PRIOR TO START MONTH



Initial box

I authorize a one-time payment in the amount of \$ \_\_\_\_\_ to bring my account current as of \_\_\_\_\_ (Date)

**PLEASE RETAIN A COPY OF THIS FORM FOR YOUR RECORDS**

Signature: \_\_\_\_\_ Date: \_\_\_\_\_

You may email this form to [customerservice@homeownercpa.solutions](mailto:customerservice@homeownercpa.solutions) or for secured delivery Fax to 954-475-1897

# Puzzles & Quizzes

Answers, page 39

## ACROSS

- 1) Kind of arrest or step
- 6) Cricket sound
- 11) Emulating a fox
- 14) Scottish families
- 15) Vibes from people
- 16) Athletic supporter?
- 17) Entry on a tax form
- 19) Egg cells
- 20) Legendary actress Bette
- 21) Tile setter's time-saver
- 23) Chromosome container
- 26) Listen, old-style
- 27) Worshiper, essentially
- 28) Globetrotter's home?
- 29) PC linkup acronym
- 30) Portly
- 32) Hitches
- 35) Large copiers?
- 37) Throat ailment, for short
- 39) Arduous journey
- 40) Phonograph needles, e.g.
- 42) Some car parts
- 44) Popular pond fish
- 45) Hal of "Barney Miller"
- 47) Withdraw, as from a union
- 49) Man "for hire" in a '80s TV show
- 51) On top of the world
- 52) Crave
- 53) Slangy potato
- 55) Do a summer's work?
- 56) Balance provider, for short
- 61) "Adolescent" lead-in
- 62) Entanglement
- 63) Items on a busy one's list
- 64) "Always" poetically
- 65) Yukon carriers
- 66) SUV part?

## DOWN

- 1) TV monitor?
- 2) In the fashion of
- 3) Something you stand to lose?
- 4) Baseball Hall-of-Famer Duke
- 5) Subjects of wills
- 6) Colombian city
- 7) "Kisses" partner
- 8) Bank offering
- 9) Aggressive poker player
- 10) Foreign correspondents?
- 11) It has its ups and downs
- 12) Riverside embankment
- 13) Be wistful
- 18) Heads off
- 22) "Looks \_\_\_ everything"
- 23) Some grand opening events
- 24) Assimilate
- 25) Pawnbroker, e.g.
- 26) Abominates
- 28) Second largest of the Great Lakes
- 31) Word with "worldly" or "woman"
- 33) Crystal-lined rock
- 34) Did half a biathlon
- 36) Creep furtively
- 38) Former Spanish currency
- 41) Web victims?
- 43) Culls
- 46) Lose track?
- 48) Drive-in employee of old
- 49) Good thing to get into
- 50) Man with a mission
- 53) Sound of a fall
- 54) Intensifies (with "up")
- 57) Perceive
- 58) Ringing endorsement?
- 59) "Neither rain \_\_\_ sleet ..."
- 60) Plus-or-minus fig.

## INCOMING

By Timothy E. Parker

1	2	3	4	5		6	7	8	9	10		11	12	13
14						15						16		
17					18							19		
			20						21		22			
23	24	25						26						
27							28							
29				30		31				32			33	34
35			36		37				38		39			
40				41		42				43		44		
		45			46				47		48			
49	50								51					
52							53	54						
55				56		57						58	59	60
61				62							63			
64				65								66		

Sudoku (answers page 39)

					9	3		
				3	6			
	1			9				8
		5	2		6			7
		7				5	2	
	4							
9	5			1	2			
		8						
		6						5

WONDERWORD

By DAVID OUELLET

**HOW TO PLAY:** First, read the list of words, then look at the puzzle. The words are found in all directions - vertically, horizontally, diagonally, backward. Circle each letter of a word found and strike it off the list. The letters are often used more than once so do not cross them out. It is best to find the big words first. When you find all the words listed in the clues you'll have a number of letters left over that spell out the WONDERWORD. To see the answer use the link below the puzzle.

**Bottles** September 24, 2021

K	A	H	B	K	S	I	H	W	M	S	K	A	E	L
R	L	E	O	P	B	V	A	C	U	U	M	C	I	A
E	O	I	L	L	E	T	W	S	T	O	N	Q	E	T
T	C	I	M	S	E	A	K	I	N	J	U	G	S	N
N	T	I	S	R	R	A	G	E	N	I	V	T	A	E
A	E	E	U	Y	R	H	Y	C	D	E	O	E	F	M
C	L	G	V	J	T	N	A	S	L	P	C	C	E	A
E	P	A	T	E	C	N	E	D	P	O	I	S	T	N
D	R	R	N	E	D	A	F	E	N	O	S	L	Y	R
G	D	O	E	L	U	L	R	T	T	A	U	E	L	O
L	L	T	E	S	A	R	A	A	G	N	K	T	D	S
A	O	S	J	S	E	I	C	E	F	R	A	I	R	L
S	H	A	K	E	N	R	K	H	O	E	U	C	I	A
S	R	E	N	E	P	O	V	C	O	L	O	G	N	E
S	P	E	R	F	U	M	E	E	F	U	L	L	K	S

Beer, Candle, Canteen, Carafe, Closed, Coins, Cola, Cologne, Container, Cork, Cruet, Decanter, Drink, Flask, Fluid, Full, Glass, Gravy, Heated, Hold, Hole, Jars, Jugs, Juice, Leaks, Liquid, Magnum, Message, Milk, Money, Neck, Ocean, Opener, Ornamental, Perfume, Pills, Preserve, Rack, Safety, Seals, Shake, Split, Spout, Stopper, Storage, Tighten, Vacuum, Vessel, Vinegar, Water, Whisk, Wine.

Puzzle answer, page 39

Solution: 6 letters

**Condo Programs Available**



Every homeowner who is at least **55** years of age should know about **Revers Mortgage loans!**

~ Purchase & Refinance ~



Federated Mortgage Services  
Licensed Lender 284131

**Call Today:**  
**Crissy**, NMLS# 447937  
Reverse Mortgage Specialist  
**Phone: 954-290-1243**  
Kcrissy@bellsouth.net



**TERESA DURANTE**  
**REALTOR**

**30 YEARS OF EXPERIENCE**  
**IN SOUTH FLORIDA**

**CELL: 305-202-1999**

**I AM A RESIDENT OF LAUDERDALE WEST**  
**TAMBIÉN HABLO ESPAÑOL**

**UNITED REALTY GROUP**

1361 SAWGRASS CORPORATE PKWY  
SUITE 300 SUNRISE, FL 33323

**TERESADURANTE@HOTMAIL.COM**

**Alexis Simply Clean**  
*Simply professional... Simply Honest... Simply Affordable...*



**Alexis Hopkins**  
**Owner|Operator**  
**(954)600-5173**

[www.alexissimplyclean.com](http://www.alexissimplyclean.com)



*Maria Becerra, Realtor*

*Cutting Edge Investments & Realty Inc*

*954-608-9378*

**954-608-9378**

*My last LW sale  
sold for \$325,000.  
**Very satisfied Seller!***

Call me now to sell your house  
at the highest possible price!



Local knowledge: ★★★★★  
Process expertise: ★★★★★  
Responsiveness: ★★★★★  
Negotiation skills: ★★★★★



Cutting Edge Investments  
& Realty

20+ years experience  
y  
**Hablo español!**

# Puzzles & Quizzes Answers

Sudoku answer to puzzle on page 37

Crossword answer to puzzle on page 36

7	6	4	1	2	8	9	3	5
5	8	9	7	3	4	6	1	2
3	1	2	6	9	5	4	7	8
8	3	5	2	4	6	1	9	7
6	9	7	3	8	1	5	2	4
2	4	1	9	5	7	8	6	3
9	5	3	4	1	2	7	8	6
1	7	8	5	6	3	2	4	9
4	2	6	8	7	9	3	5	1

1	F	A	L	S	E		C	H	I	R	P		S	L	Y		
14	C	L	A	N	S		15	A	U	R	A	E		16	T	E	
17	C	A	P	I	T	A	18	A	L	G	A	I	N		19	O	
						20	D	A	V	I	S		21	S	P	A	
23	G	A	M	E	T	E						26	H	E	A		
27	A	D	O	R	E	R			28	H	A	R	L	E	M		
29	L	A	N			30	S	T	O	U	T		32	S	N	A	
35	A	P	E	S		37	S	T	R	E	P		39	T	R	E	
40	S	T	Y	L	I		41		42	H	O	S	E	S		44	K
						45	L	I	N	D	E	N		47	S	E	C
49	S	P	E	N	S	E	R						51	E	L	A	
52	H	A	N	K	E	R			53	T	A	T	E	R			
55	A	D	D			56	C	A	S	H	M	A	C	H	I	N	E
61	P	R	E			62	T	I	E	U	P			63	T	O	D
64	E	E	R			65	S	L	E	D	S			66	S	P	O

Wonderword Answer: **BEAKER** (Puzzle on page 37)



## APPLIANCE REPAIRS



### TECHNICIANS APPLIANCE GROUP, LLC.

#### Over 30 Years of Experience in Appliance Service

Servicing all appliance brands, Air Conditioning, Light Plumbing and Electrical.

Serviced Lauderdale West for over 15 years while working for Century Service and still servicing Lauderdale West area and Plantation area.

**CALL JOSE RODRIGUEZ FOR SERVICE TODAY!**

**786-325-3983 \* 305-492-9110**

**Techappliancegroup@gmail.com**

LAUDERDALE WEST COMMUNITY ASSN NO. 1 INC.

# HOME INSPECTION REPORT

OWNER: \_\_\_\_\_ UNIT # \_\_\_\_\_ DATE: \_\_\_\_\_

ADDRESS: \_\_\_\_\_ PURPOSE: \_\_\_\_\_

**STRUCTURAL/HARDSCAPING:**

- \_\_\_\_\_ **AWNINGS** REPAIR \_\_\_\_\_ CLEAN \_\_\_\_\_ PRIME/PAINT \_\_\_\_\_ MUST BE IN OPEN POSITION \_\_\_\_\_
- \_\_\_\_\_ **GUTTERS** REPAIR \_\_\_\_\_ CLEANOUT \_\_\_\_\_ REMOVE PLANTS \_\_\_\_\_ REMOVE DOWNSPOUT \_\_\_\_\_
- \_\_\_\_\_ **FRONT PORCH** REPAIR \_\_\_\_\_ POWERWASH \_\_\_\_\_ PAINT \_\_\_\_\_ REMOVE CLUTTER/STORAGE/POTS \_\_\_\_\_
- \_\_\_\_\_ **BACK PATIO** REPAIR \_\_\_\_\_ POWERWASH \_\_\_\_\_ PAINT \_\_\_\_\_ REMOVE CLUTTER/STORAGE/POTS \_\_\_\_\_
- \_\_\_\_\_ **SIDE WALKWAY** REPAIR \_\_\_\_\_ POWERWASH \_\_\_\_\_ PAINT \_\_\_\_\_ REMOVE CLUTTER/STORAGE/POTS \_\_\_\_\_
- \_\_\_\_\_ **MAILBOX** REPAIR \_\_\_\_\_ CLEAN \_\_\_\_\_ MAILBOXES MUST BE WHITE \_\_\_\_\_
- \_\_\_\_\_ **WINDOWS** REPAIR \_\_\_\_\_ CLEAN \_\_\_\_\_ REMOVE SIGNS \_\_\_\_\_

**LANDSCAPING:**

- \_\_\_\_\_ **REMOVE**
  - \_\_\_\_\_ PLANTS IN COMMON AREA
  - \_\_\_\_\_ ROCKS/STONES/PAVERS
  - \_\_\_\_\_ PLANTS FROM AROUND/ON TREE \_\_\_\_\_ LIGHT POLE \_\_\_\_\_ MAILBOX \_\_\_\_\_
  - \_\_\_\_\_ TREES/STUMPS/ROOTS
  - \_\_\_\_\_ CLUTTER/STORAGE IN PLANTING BED
  - \_\_\_\_\_ WALKWAY LIGHTS
  - \_\_\_\_\_ EXCESSIVE (MORE THAN 10) POTTED PLANTS OR EMPTY POTS
  - \_\_\_\_\_ PLANTING BED BEYOND THREE FEET
  - \_\_\_\_\_ PLANTING BED TOO CLOSE TO HOUSE
  - \_\_\_\_\_ POTS MUST BE MOVABLE DURING HURRICANE
  - \_\_\_\_\_ EMPTY POTS
  
- \_\_\_\_\_ **TRIM**
  - \_\_\_\_\_ ALL FRONT BUSHES TO MAXIMUM HEIGHT OF 4 FEET
  - \_\_\_\_\_ ALL SIDE BUSHES MAXIMUM HEIGHT 4 FEET
  - \_\_\_\_\_ ALL BACK PATIO BUSHES MAXIMUM HEIGHT 5 FEET
  - \_\_\_\_\_ ALL CORNER BUSHES TO MAXIMUM HEIGHT 5 FEET
  
- \_\_\_\_\_ **MAINTAIN**
  - \_\_\_\_\_ WEED FLOWER BED
  - \_\_\_\_\_ INSTALL BORDER AROUND FLOWER BED
  - \_\_\_\_\_ REPAIR/POWERWASH BORDER
  - \_\_\_\_\_ INSTALL MULCH

1. THE ASSOCIATION ASSUMES NO RESPONSIBILITY AND/OR REPAIR OF ANY ALTERATIONS, IMPROVEMENTS OR MODIFICATIONS.
2. HOMEOWNERS ARE RESPONSIBLE FOR THE EXTERIOR MAINTENANCE OF THEIR HOME WHICH INCLUDES ALL OF THE ABOVE AS WELL AS DECORATIONS AND FURNITURE.
3. ALL PLANTINGS MUST HAVE WRITTEN BOARD APPROVAL.
4. PLEASE NOTE: "PLANTINGS WILL BE REMOVED AT OWNER'S EXPENSE AFTER 14 DAYS NOTICE"  
FAILURE TO COMPLETE THE WORK IS A VIOLATION OF OUR ASSOCIATION DOCUMENTS AND MAY RESULT IN A FINE.

DATE: \_\_\_\_\_ NEEDS WORK: YES ( ) NO ( ) DATE: \_\_\_\_\_ REINSPECTION WORK COMPLETED: \_\_\_\_\_



## What's the best way to protect my personal information?

Regularly monitoring your account activity is the best way to help detect if you have been a victim of fraud. Your bank's on-line banking service allows you to access and review your account activity at your convenience and signing up for electronic statements may also help reduce your risk of mail fraud.

Download your bank's mobile banking application and allow push alerts for more secure communication about your accounts. Keep your contact information, especially cell and email, current. Review and respond to alerts promptly. Turn on location services when making a purchase or signing in and allow location-based anti-fraud and security permissions.

### Some additional tips for how you can help protect your information offline.

- Always know where your credit or debit card is. If you misplace it, contact your bank immediately so they can block the card from use.
- Don't write your personal identification number (PIN), Social Security number, driver's license number or credit card account number on checks or on your ATM, credit card or debit card.
- Use ATMs with surveillance cameras and be aware of people and your surroundings. When you enter or exit an ATM in an enclosed area, be sure you close the entry door completely. Cover the keypad when entering your PIN so skimming thieves can't capture it with your card number. Secure your card and cash after completing your transaction and before exiting the ATM area.
- Keep mail secure. Receive and store as many of your account statements electronically as you can. Consider going paperless and accessing your statements through Online Banking.
- Tear up or shred pre-approved credit offers, receipts (including ATM receipts) and other information that could link your name to your account numbers. Check your municipal waste disposal or recycling center for shred days.
- Monitor bills and bank statements frequently. Immediately report any suspected fraudulent transactions to the holder of your account, such as your bank or credit card company.
- Store canceled checks, new checks, and account statements in a safe place.

You should also familiarize yourself with your financial institution's privacy policies and notices.



LIC # 98-8905-AL

# WINDOWS



DEALER NETWORK  
CELEBRATING 51 YEARS OF  
PORCH ENCLOSURES.

## ACRYLIC & IMPACT Porch Enclosures

### Hurricane Shutters & Impact window Protection.





Call For Your Free Estimate Today

954-816-0900

[www. JohnsonAluminumProducts.com](http://www.JohnsonAluminumProducts.com)

Serving All of Broward Including: Plantation / Sunrise Lakes / Century Village

SERVING OVER  
20,000 HAPPY  
CUSTOMERS IN  
BROWARD SINCE  
**1965**

# THINKING OF SELLING?

*Tami Stogner-Realtor*



LLINAS REALTY GROUP, INC.

Let Me \$ave You \$\$\$!

**Call, Text, or Email anytime!**

**954-770-7506**

**[tamistg@bellsouth.net](mailto:tamistg@bellsouth.net)**

- Full Service Realtor with "NEGOTIABLE" Commissions
- Providing 25+ years of Real Estate Excellence
- The most up-to-date marketing technology
- My goal is to get the highest price for your property!

**Llinas Realty Group, Inc.**

Flexible Commissions, Professional Service

**Tami Stogner**

Realtor

954 770-7506

10736 Charleston Place  
Cooper City, Florida 33026

[tamistg@bellsouth.net](mailto:tamistg@bellsouth.net)  
Call, Text or Email anytime



**CHECK OUT MY REVIEWS ON ZILLOW.COM  
REFERENCES AVAILABLE UPON REQUEST.**



We honored our resident veterans at a gathering on Thursday, November 11th, Veterans Day. As you can see from the photo, many veterans attended. It was a lovely get together where every veteran spoke about their branch and location of service, rank and some gave us a short story of their deployment. One even recited his serial number! Richard Berman gave a tribute to his long-time friend, Joe Asaro. Phyllis Gerber, a youthful 102, gave a captivating overview of her amazing service. Councilman Nick Sortal attended and encouraged our vets to apply for a free Honor Flight to Washington, DC. Each veteran was given a gift bag and a beautiful bounty of snacks, cookies and refreshments were enjoyed by all. Our veterans' names and a photo of them in uniform was running on the television screen throughout the event.

Lauderdale West thanks Rikki Johnson, Linda Owen, Elisa Rosenblum and Cynthia Schmidt for organizing such a wonderful celebration of our veterans. And a thank you to Scott Rosenblum who was our DJ for the event.

Honor Flight applications are available on our website: [Lauderdalewest.org](http://Lauderdalewest.org). Joanne Hill also has forms in her office (Room 121). She also has a Veterans Information Sheet which we would appreciate veterans completing if you have not already done so. You can also find that form on our website. You may email Joanne at [jhill@lauderdalewest.org](mailto:jhill@lauderdalewest.org) and she will email the forms to you.

Again, we thank and honor all our veterans for your service to our great country.

**PHYSICAL & OCCUPATIONAL THERAPY**

Are You Suffering From Back Pain, Poor Balance, Weakness?



We offer Ultrasound, Massage, Balance & Vestibular Therapy  
 Cardiac, Neurological and Senior Rehab  
Exclusive 1 on 1, In the Comfort of your Home  
 Protective Equipment Protocols

**THERAPY IN YOUR HOME**

Licensed Medicare Provider FL8318

Brian Caits @ 954-328-1505

**LECTRA-FAST**

**ELECTRICAL SERVICES INC.**

**(954) 689-8998**

**EC#13002335**



## ROBERT'S BARBER SHOP

Traditional • Old Fashion

**Men's & Boys Hair Styling**  
Since 1995

- Scissor Cuts
- Layer Cuts
- Razor Cuts
- Flat Tops
- Fades
- Hot Shaves
- Beard Trim
- Ladies Cuts







*We speak English, Italian & Spanish*

Appointments Suggested  
**954-746-8886**  
 2692 N. University Dr.  
 Sunrise, FL 33322

Oakland Pk. Blvd.	Next to Kings Head Pub ★	Sunset	Sunrise Blvd.
	University Dr.		



# Safe, Compassionate & Dependable IN-HOME CARE

## Taking care of all your needs.

ALL COVID-19 PRECAUTIONS TAKEN

Hourly • Daily  
Weekly • Overnight

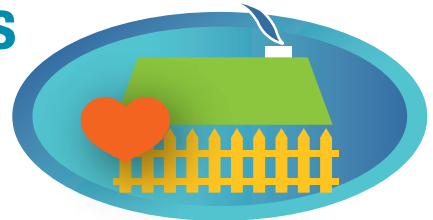
- Daily Tasks • Transportation • Cleaning & Laundry
- Meal Prep • Shopping • Appointments & Errands
- Companionship • Medication Reminders
- Overnight Attendant Care
- & Much More!



## What our clients are saying ...

I cannot find the words to say how wonderful **IDS IN HOME CARE**. The caregiver's service to my mother has been outstanding. The personal, on-hands service was extraordinary.  
**Paula K.**

I live in Michigan. **IDS IN HOME CARE** provided such excellent service for my father who lives in Florida. I highly recommend IDS. IDS gave such personal attention to my father's needs, almost like family.  
**Bob H.**



# IDS

INDEPENDENCE,  
DIGNITY & SECURITY

---

## IN-HOME CARE



# 954.476.5353

8201 Peters Rd. • Ste 1000 • Plantation FL 33324



Insurance & Private Pay Accepted

[www.IDSInHomeCare.com](http://www.IDSInHomeCare.com)

Licensed & Insured  
HCS232941 & NR302-11726



**AVOID ONLINE HOLIDAY SCAMS**

*From AAA Living Nov/Dec 2021*

The holidays are a busy time for families – and thieves. The chief information security officer for AAA highlights a few digital scams to watch out for this holiday season.

**Charity scams:** These pretend to raise money for legitimate needs. Before contributing, research them online to make sure you’re giving to a reputable charity.

**Travel and discount scams:** Beware of offers that seem too good to be true. Links in these emails may take you to a site that installs malware or requests personal information.

**Delivery scams:** Beware of fake emails disguised to look like they’re from Amazon or UPS, offering to help you track a delivery. Here again, they may include links that take you to a site that installs malware or requests personal information. Instead, go to the company website and track from there.

**BE AWARE  
BE PREPARED**

For our personal safety here in Lauderdale West and wherever we may travel, we need to be aware of our surroundings and pay close attention by following the guidelines below.

- Never open your door to anyone you do not know or did not invite.
- Double check with the utility company if a worker just knocks on your door. Call the company to verify the work order for your home (FPL, Plantation Utilities, Blue Stream, etc.).
- ALWAYS lock the doors to your home and your vehicle.
- Do not give anyone your personal information, especially your social security number, bank account information, birth date.
- Do not walk alone - use the buddy system and walk during daylight hours.
- Post your NO SOLICITATION sign and do not be afraid to call the Police non-emergency number (954-797-2100) - it is better to be safe than sorry.
- The Lauderdale West Maintenance team all wear Lauderdale West shirts. They DO NOT wear a vest.

**PLEASE DO NOT OPEN YOUR DOOR TO ANYONE YOU DO NOT KNOW.**



# FLORIDA SHUTTER FACTORY, INC

*Protection is Not a Luxury it's a Necessity!*


**Custom Manufacturing • Professional Installation**

**• Accordions • Roll-Ups • Panels • Bahamas**

 **BUY FACTORY DIRECT & SAVE**

 **NOW OFFERING NO CONTACT ESTIMATES, INSTALLATION AND SERVICE.**

 **WE SELL THE TIGHTEST STACKING ACCORDION SHUTTER IN THE INDUSTRY!**



**CALL**

**For Your**

**FREE ESTIMATE**

**954.687.4793**

**WWW.FLSHUTTERFACTORY.COM**






Cards



PREMIER RESIDENCES OF PLANTATION

A FIVE STAR SENIOR LIVING COMMUNITY



# There's nothing like celebrating the holidays in South Florida.

*At Five Star Premier Residences of Plantation our experience makes the difference. Decades of knowledge and years in our community; we're very good at what we do! Our team members know how to make our community fun, safe, and fabulous! This is your opportunity to join a close-knit community of active adults and take pleasure in the vacation-like lifestyle you deserve.*



## Happy Holidays from Premier Residences of Plantation.

### The best place to be right now!

- Spacious rental apartments with no buy-in
- Wellness center and 24-hour nursing available
- Live entertainment, sports lounge and big-screen TV
- Washer/dryer in every apartment
- Chef-created gourmet dining
- Beautiful courtyard and heated pool
- Art studio, cinema room, fitness center and salon
- Chauffeured transportation



Assisted Living Facility #7340



Find us on Facebook

8500 W Sunrise Blvd, Plantation, FL 33322  
www.FiveStarPremier-Plantation.com

**CALL ABOUT OUR YEAR-END MOVE IN SPECIALS!**  
**(954) 289-5646**



# Keven Kane

3RD GENERATION HOME OWNER IN LAUDERDALE WEST with over 30 years experience in Real Estate



KevenSells@EnMarProductions.com

954 326 4178

No worries, when you allow me to list your Lauderdale West property for sale, my team and I will help you in ways you likely have not even imagined. Selling a home can be a stressful time, let us be there for you every step of the way. You have many REALTORS® to choose from.

Please allow me to put the full strength of my team to work for you in order to earn your confidence.

Let's talk. 954 326 4178



## Need help moving? Need help preparing your home for market?

List with me and my Team becomes **your team!**

**We do it all!**

I work closely with the LW Association to ensure a speedy approval for the sale of your home

VALID FOR THE LIMITED TIME ONLY

KEVEN'S LAUDERDALE WEST

# STIMULUS OFFER

List with Keven & get up to \$1000 worth of the following services FREE to prepare your home for sale!



GARDENING



PAINTING



DEEP CLEANING

WORK WITH MY TEAM AND KEEP MORE OF YOUR MONEY.

**ADDRESS CORRECTION REQUESTED**

**Howard Helps “Lauderdale West” Dreams Come True!**  
**Living in Plantation over 42 years and serving Lauderdale West**



**954 - 647 - 9254**

**Ceil Brown Realty**

[howardwinter@comcast.net](mailto:howardwinter@comcast.net)

<http://howardwinter.matrix.southfloridaml.com>

**Howard Winter**  
Realtor

*happy holidays*

**SINGLE FAMILY HOMES/PLEX'S/RENTALS**

- \* **LAKEVIEW** - 2 BEDROOM / 2 BATH/ GARAGE, corner lot, extended Florida room, needs TLC **\$249,000**
- \* **LAKEVIEW** - 2 BEDROOM /2 BATH/ GARAGE, On water, split bedroom plan, large screened patio **\$349,900**
- \* **4 / PLEX** - 1 BEDROOM /1 ½ BATH, Updated, open floor plan, enclosed patio **\$165,000**
- \* **LAKEVIEW** - 2 BEDROOM /2 BATH/ GARAGE, Immaculate, updated, hurricane protection **\$2,000/mo.**

**EACH UNIT HAS MANY MORE FEATURES CALL FOR MORE INFO.**  
**MANY MORE UNITS ALSO FOR SALE....**