

# Lauderdale West NEWS

An Active 55+ Community!



Volume 51

FEB - MAR 2022

No. 01



## VALENTINE'S DAY

Although there were several Christian martyrs named Valentine, the day may have taken its name from a priest who was martyred about 270 AD by the emperor Claudius II Gothicus. According to legend, the priest signed a letter "from your Valentine" to his jailer's daughter, whom he had befriended and, by some accounts, healed from blindness. Other accounts hold that it was St. Valentine of Terni, a bishop, for whom the holiday was named, though it is possible the two saints were actually one person. Another common legend states that St. Valentine defied the emperor's orders and secretly married couples to spare the husbands from war. It is for this reason that his feast day is associated with love.

Formal messages, or valentines, appeared in the 1500s, and by the late 1700s commercially printed cards were being used. The first commercial valentines in the United States were printed in the mid-1800s. Valentines commonly depict Cupid, the Roman god of love, along with hearts, traditionally the seat of emotion. Because it was thought that the avian mating season begins in mid-February, birds also became a symbol of the day. Traditional gifts include candy and flowers, particularly red roses, a symbol of beauty and love.

## IMPORTANT NOTICE

Several changes have been made to **A Guide for Living at Lauderdale West.** Please turn to Page 5 to review the changes. The complete Guide for Living can be viewed on our Website [www.lauderdalewest.org](http://www.lauderdalewest.org) Copies are also available in the Applications Office

## LAUDERDALE WEST BOARD OF DIRECTOR ELECTIONS



Another year has gone by and it's almost election time for your Board of Directors. We will be voting for six positions this year, so keep this date in mind: **February 16, 2022.** That's the date when you must submit your Intent to run for the Board. Elections will be held on March 28, 2022.





*Maria Becerra, Realtor*

*Cutting Edge Investments & Realty Inc*

**954-608-9378**

*I always answer my phone!*

*Call me to sell or purchase*

*20+ years experience  
y hablo español!*



Five Star AWARD 2021  
**Broker Agent**  
Real Estate Advice, Review, and Recognition **Advisor**

*Certificate of Excellence*

*This is to certify that*

*Maria E Becerra*

*has met or exceeded criteria established by Broker Agent Advisor relevant to experience, reputation, and achievement... and having demonstrated every quality characteristic of a superior real estate professional is hereby recognized and honored for exemplary service to their community and as a credit to the real estate profession.*



*Chad Golladay*  
Chad Golladay  
Executive Publisher  
Broker Agent Advisor

*Deborah Lumby*  
Deborah Lumby  
Director of Awards and Recognition  
Broker Agent Advisor

*Featured Articles*

Board Meeting Dates ..... 8  
 Bulk and Garbage Pickup .....15  
 Bus Schedule ..... 6  
 Calendars .....23-26  
 Clubs & Activities .....16-18  
 Directors' Contact Information ..... 7  
 Entertainment ..... 27&28  
 From the Editor ..... 6  
 From the President ..... 4  
 From the Property Appraiser .....41  
 From the State Representative .....41  
 Guide for Living at LW ..... 5  
 Gym Rules & Etiquette .....20  
 Helpful Phone Numbers ..... 8  
 Home Inspection Report .....40  
 Household Hazardous Waste .....14  
 Maintenance Auto Debit Form .....35  
 Maintenance Procedures .....19  
 Newspaper Deadlines ..... 9  
 Notice to Landlords .....43  
 Pest Control Policy .....21  
 Plantation News .....16,29,31,32  
 Puzzles .....36&37  
 Recycling Guidelines .....15  
 Safety Tips .....13,31,45  
 Swimming Pool Rules .....20  
 Web Site/Social Media Alert .....13



**LAUDERDALE WEST NEWS**

1141 NW 85 Avenue  
 Plantation, FL 33322-4624  
 (954) 473-8219 Ext 126  
 newspaper@lauderdalewest.org

**MANAGING EDITOR**  
 Joanne Hill

**ASSISTANT EDITOR**  
 Lana Famiano

**ADVERTISING EDITOR**  
 Connie Guzzi

**LW ANNEX & GYM**  
 1301 NW 87 Lane  
 Plantation, FL 33322

**LW Board of Directors and Areas of Responsibility 2021**  
**Business Office Phone Number: 954-473-8219**



**JENNIE LIPARI, *President***  
 Notary Public; Administration; Association Compliance; Home Inspections, Bus Schedule  
 Contact: Extension 108 Email: jlipari@lauderdalewest.org



**JOANNE HILL, *1st Vice President***  
 Notary Public; Legal; Association Insurance; Exterior Painting; LW Newsletter; Recording Secretary; Estoppels  
 Contact: Extension 114 Email: jhill@lauderdalewest.org



**BARBARA BUCCI, *2nd Vice President***  
 Maintenance Department; Entertainment/Social Events; Landscaping/Trees; Roof Repair/Replacement  
 Contact: Extension 124 Email: bbucci@lauderdalewest.org



**MARLENE NEWMAN, *Secretary***  
 Lease Applications/Approvals; Pools/Spas  
 Contact: Extension 113 Email: mnewman@lauderdalewest.org



**PAULINE GOSSELIN, *Assistant Secretary***  
 Notary Public; Sales Applications/Approvals; Volunteers  
 Contact: Extension 127 Email: pgosselein@lauderdalewest.org



**BERNADETTE BRODMERKEL, *Treasurer***  
 Notary Public; Finance; Irrigation, Pest Control  
 Contact: Extension 104 Email: bbrodmerkel@lauderdalewest.org



**ROSEMARIE DEMMONS, *Director***  
 Library; Club and Activities  
 Contact: Extension 117 Email: rdemmons@lauderdalewest.org



**JOHNNY McLEAN, *Director***  
 Facilities Management; Parking Lot/Roadway Paving; Gym  
 Contact: Extension 125 Email: jmclean@lauderdalewest.org



**HAL SPECTOR, *Director***  
 Director; Plex Insurance Certificates; HO3/HO6 Insurance  
 Contact: Extension 112 Email: hspector@lauderdalewest.org



**JAY STAHL, *Director***  
 Home Inspections; Exterior Maintenance Compliance  
 Contact: Extension 103 Email: jstahl@lauderdalewest.org



**KRISTI K. WOODS, *Director***  
 Notary Public; Blue Stream; Technology; Purchasing; Modifications/Architectural Review  
 Contact: Extension 109 Email: kwoods@lauderdalewest.org

**COPYRIGHT**

IF YOU ARE SUBMITTING ARTICLES, DRAWINGS, ETC. FROM A PRINTED SOURCE OR A WEBSITE, PLEASE BE AWARE THAT COPYRIGHTED ARTICLES MAY BE REPRINTED WITH EXPRESS WRITTEN PERMISSION FROM THE COPYRIGHT HOLDER. CREDIT MUST BE GIVEN TO THE ORIGINAL AUTHOR OR SOURCE IN ALL CASES.

**EDITORIAL POLICY**

ALL MATERIAL SUBMITTED IS SUBJECT TO EDITORIAL DISCRETION. PLEASE BE BRIEF AND TO THE POINT AND KEEP A COPY OF ANY ITEM YOU SUBMIT. WE ARE NOT RESPONSIBLE FOR THE LOSS OF ORIGINAL MATERIALS.

**DISCLAIMER**

PLEASE BE ADVISED THAT LAUDERDALE WEST COMMUNITY ASSN NO. 1 INC AND LAUDERDALE WEST NEWS DO NOT ENDORSE ANY OF THE ADVERTISERS HEREIN. THEREFORE, WE ARE NOT RESPONSIBLE FOR ANY CLAIMS, DEFECTS IN PRODUCTS, WORKMANSHIP OR TIMELINESS IN THE PERFORMANCE OF THE WORK. THE ADAGE "LET THE BUYER BE AWARE" APPLIES.

# from the PRESIDENT

**THANK YOU:** Thank you to all our volunteers who help us manage the business office and all the other activities at LW. We are a successful Association because of your generous contribution of your time and talent. Thank you to all my fellow Board Members who do an amazing job every day solving all the complicated issues that come up in managing an Association of 1,359 homes. They continue to be creative in coming up with solutions that meet our needs and keep costs down.

**1. Exterior Home Maintenance.** The Board continues to focus on the physical appearance of our Community. This is yet another reminder to homeowners that it is their responsibility to maintain the exterior of their home. Please read your documents if you don't believe us. Home Inspections are required for all sales, leases, roof replacements, house painting and complaints. There are still some homeowners who do not feel it is their responsibility to remove mold from porches and railings or to store their junk in the garage and not on the back patio or front porch. Homeowners are also responsible to maintain their driveway as well as the exterior of their home. Keep front plantings under the windows, please. Plantings around mailboxes and light poles will be removed at homeowner's expense.

**2. Holiday Decorations.** After looking through old minutes and records, we could not find any resolutions or guidelines on holiday decorations in LW. Obviously, with the new trend of very large lawn decorations that have sprung up in LW, we will need to create some guidelines. We will plan to hold some workshop meetings open to the membership and develop a formal resolution that will meet everyone's needs.

**3. Library.** Thank you for your library donations. We are no longer accepting soft cover and pocket books. Only hardcover books published in the past five (5) years will be accepted. Please do not drop off books after hours. There is no one available to properly stock them.

**4. Pool Patio.** The canopies have finally been installed on the outside pool patio. You now have an area to have lunch or snacks while at the pool that will be shaded, comfortable and secure.

**5. Landscaping.** We know that many of you

have noticed we are in the process of removing old bushes on the common areas and trimming the old (really old) bushes around the parking lots. It was recommended that they be replaced due to their age and poor upkeep over the years. We had our vendor trim them in the hope that it would generate new growth so they could be shaped properly. Unfortunately, we agree that they were trimmed lower than we expected and are not attractive. If they do not improve, we will replace them with a clusia hedge and monitor proper trimming in the future. We are also planting clusia hedges around the old FPL boxes to match the clusia hedges that Blue Stream had planted around their boxes, as they are not subject to whitefly and will fill in quickly.

**6. Board of Director Meetings.** As per the Florida Statute, we hold regular business meetings wherein the Board Members have an opportunity to relay important information to the membership and to vote on issues important to the Association. These meetings permit homeowners to voice their concerns and to ask questions. A commitment of respect is expected on both sides. Yelling, repeating over and over for more than 10 minutes your displeasure with the Board, and behaving in a disrespectful manner will not be tolerated. The meeting will be interrupted by calling for a recess. It is unfair to persons who wish to speak after you if you insist on speaking for more than the time allocated. Please call the business office and ask for an appointment directly with any member of the Board. I am available for an appointment with any homeowner at their convenience during business hours.

**7. 8601 West Sunrise Blvd.** We have just learned that a developer has started the paperwork to redevelop the area behind the Social Security building on the old AT&T campus of 14 acres. They are planning to build 392 more rental apartments, a commercial office building with retail and a 5-story garage. There will be parking for 1,000 cars and one of the planned exits from this development will lead directly into Lauderdale West Drive (85th Avenue). Imagine 1,000 cars racing down 85th Avenue from Sunrise to Cleary! We attended a Planning and Zoning meeting on November 30th and a City Council meeting on December 7th to oppose this development. We also joined with other communities in Plantation to voice our concerns. We need your help in attending these meetings to let our City know that we do not need or want this property to be developed as planned.

**A GUIDE FOR LIVING AT LAUDERDALE WEST  
ONLY CHANGES/ADDITIONS ARE REFLECTED HEREIN AND UNDERLINED  
SEE WEBSITE FOR FULL GUIDE FOR LIVING  
COPIES AVAILABLE IN APPLICATIONS OFFICE**

**1. Maintenance Fee:**

Single Family Home maintenance for <u>2022</u>	<u>\$367.00</u> - Per Month
Plex Home maintenance for <u>2022</u>	<u>\$340.00</u> - Per Month

**5. Over 55 Community:** At least one person over 55 must be the primary resident and must occupy the premises the majority of the year.

**7. Front Pole Lights:** Plantings of any kind are not allowed around the pole lights.

**9. Mailboxes:** Plantings of any kind are not allowed around the mailbox posts.

**10. Minor Plumbing and Electrical Repairs:** Any plumbing or electrical repair that requires a license or special tool is the responsibility and at the expense of the homeowner. It is suggested that you use single ply toilet paper. Wipes, even those that are "flushable", paper towels, or cigarette butts must never be flushed down the toilet.

**11. Exterminating:** Spraying is done monthly. If you wish monthly interior exterminating, you can call Beach Environmental at (954) 458-1104 and make arrangements for interior spraying.

**12. Lawn Maintenance:** Homeowners are not permitted to install any plantings or trees on the common areas, which must remain grassed, around their homes that would interfere with proper lawn maintenance.

**13. Plantings:** If you purchased a home with existing plantings within three feet of the home, they become your responsibility and they must be maintained or removed.

**15. Roofs:** LW is not responsible for replacing or repairing single family home roofs due to hurricane, wind damage or fire. Plex roofs are covered under the Lauderdale West insurance for hurricane or wind damage.

**17. House Painting:** Painting of the exterior of homes by the owner is not permitted.

**21. Insurance:** Lauderdale West Community Association No. 1, Inc. must be added to all policies as "Additional Interest".

**25. Gym/Pool Annex:** The Gym/Pool Annex is located next door to the Maintenance Office at 1301 NW 87<sup>th</sup> Lane.

**27. Parking:** Parking on grassy areas is allowed with only two wheels on the same side of the vehicle on the grass.

**30. Snowbirds** and residents who will be away from their unit for any length of time, must turn off the water, hot water heater and ice maker. You must provide the Association with the name and telephone number of a local person who has your key in the case of an emergency.



# From The Editor

*Joanne Hill*

Can you believe the Holidays are over and we're heading toward Spring? Where did 2021 go? We celebrated bringing in the New Year with a bang here at Lauderdale West. What a wonderful party! A special thanks to Anna Bender and her committee.

Thankfully we were able to get out of our homes and socialize the second half of 2021. Let's hope and pray we can do the same in 2022. We have a lot of fabulous shows lined up and we would like to see you there. We are having a new Party Time event this year. We are celebrating Mardi Gras on Saturday night, February 12th. Come party with us!

I have been hearing from some residents that the LW News is not fun or happy; that there are too many don'ts and not enough do's! The purpose of the News is to keep residents informed of the rules and regulations which govern Lauderdale West as well as pertinent information from the City and County. It is not a social magazine. However, we do try to include humorous and entertaining articles.

It has come to my attention that someone in this Community sent out at least one letter on December 2, 2021, and another on December 6, 2021, under my signature! How dare you??? This letter was not on official LW letterhead and my signature was typed. I did not send it! If you received a letter regarding holiday decorations, please let me know. If I find out who sent those letters, I will be sure they are prosecuted to the fullest extent of the law! This is no joke!

Live long and prosper!

## LAUDERDALE WEST BUS SCHEDULE

MONDAY	TUESDAY	WEDNESDAY	THURSDAY	FRIDAY
9:00AM-11:00AM DESTINATION:  PUBLIX DOLLAR TREE BANK OF AMERICA		9:00AM-11:00AM DESTINATION:  WALMART (OAKLAND PARK) BRAVO SHOPPING CENTER BANK OF AMERICA CHASE BANK	9:00AM-11:00AM DESTINATION:  ALDI (BROWARD BLVD) BROWARD MALL	9:00AM-11:00AM DESTINATION:  PUBLIX DOLLAR TREE BANK OF AMERICA
<b>NOTICE</b>			<b>PICKUPS</b>	
SIGN IN REQUIRED BEFORE BOARDING BUS			FOR PICK UP	
DESTINATION STOPS ONLY			CALL PETE ON DAY OF TRIP	
PLEASE BE OUTSIDE HOME FOR PICKUP			(954) 496-2543	
VIDEO SURVEILLANCE IN USE ON BUS FOR YOUR SAFETY				
<b><i>BUS FARE: FREE TO ALL RESIDENTS</i></b>				





## LW BOARD Meetings

### FEB - MAR 2022 BOARD MEETINGS

Wed, February 16 – 10 AM – Room 113  
Wed, March 16 – 7 PM – Room 113

The Board meetings are **open to all residents of LW**. Meetings are subject to change or cancellation. Please check the Community Channel 901, the Lauderdale West Website ([www.lauderdalewest.org](http://www.lauderdalewest.org)) or signage at the Main Clubhouse for changes or cancellation notification. If you have signed up for email or text messages, you will be informed accordingly.

### IMPORTANT NOTICE

#### 2022 MAINTENANCE PAYMENTS

Beginning January 1, 2022, our monthly maintenance payments were:

- Single Family Home           \$367
- Plexes                               \$340

Don't forget: Payments are due on the first day of each month. Thank you.



### Helpful Phone Numbers and Email Addresses

Beach Environmental (Pest Control)	954-458-1104
Blue Stream	954-282-6578
Broward County Health Department	954-467-4700
City Hall – General Information	954-797-2200
Code Enforcement	954-797-2267
COVID Vaccine Appointment (Over 65)	866-201-6313
Fire Department – NON-emergency	954-797-2150
Florida Power & Light (FPL)	954-797-5000
<b>LW Maintenance</b>	<b>954-473-2595</b>
Plantation Recycling	954-452-2535
Poison Control Hotline	800-222-1222
Police Department – NON-emergency	954-797-2100
Suicide Prevention Lifeline	800-273-8255
Water Department	954-797-2290
Westside Hospital	954-473-6600

\* To reach the MAINTENANCE Department during regular hours, please call: **954-473-2595**.

Leases:	<a href="mailto:leaseapplications@lauderdalewest.org">leaseapplications@lauderdalewest.org</a>
Maintenance:	<a href="mailto:maintenancedept@lauderdalewest.org">maintenancedept@lauderdalewest.org</a>
Sales:	<a href="mailto:salesapplications@lauderdalewest.org">salesapplications@lauderdalewest.org</a>

## OFFICE

## PROTOCOL

For our Board to be more efficient in the handling of their responsibilities, a procedural policy continues to be in place.

1. Please make your first stop the Front Desk in the Lobby.
2. Provide your name, address, and the area of your concern.
3. The Lobby Assistant will then notify the Board Member overseeing that area that you are waiting in the Lobby.

Residents are discouraged from just walking into

the President's or other Board Member's office with their concerns. Residents are discouraged from lingering around a Board Member's door. We ask that you wait in the Lobby - you will be called when it is your turn.

**EVERYONE'S TIME IS IMPORTANT AND THIS WILL ENSURE THAT ALL RESIDENTS ARE SEEN IN A TIMELY MANNER.**

We ask for your cooperation, which will enable the Board to budget their time to conduct the business of Lauderdale West. Thank you.





Our Lauderdale West Community has established principles of conduct for the general good and welfare of all our owners, tenants, and guests. Every resident of our Lauderdale West Community has the right to live peacefully in their home and has the right to expect that the value of their property will be upheld in a reasonable manner.

The Board of Directors would like to remind everyone of the following:

- For the safety of everyone, we **MUST** follow all parking restrictions and the directional signs in the parking lots.
- Owners, tenants, and guests are required to follow our documents and rules and regulations.
- Owners are responsible to maintain the exterior of their homes (gutters, awnings, patios, landscaping).
- Residents are not permitted to install any plants, shrubs, or trees without written Board approval.
- Owners (Landlords) must contact the Maintenance Department for all service requests for their property. Requests will not be accepted from tenants or guests.
- Owners, tenants, and guests are required to follow City ordinances regarding animals.
- Owners are required to seek approval for all home modifications in advance.
- Front pole lights and rear security lights must be kept on at night.
- Owners are responsible for their tenants and guests.
- Residents must respect quiet times from 10:00 PM to 8:00 AM.
- Non-adherence to the Lauderdale West documents and rules and regulations will result in the resident being fined accordingly.

*For more information, please visit [www.lauderdalewest.org](http://www.lauderdalewest.org) for a full explanation of our violation procedures and fines.*



When leaving a voice mail message for your Directors, the Maintenance Department, and/or other departments, please speak **slowly** and **clearly**. Provide your name, address, telephone number and a **brief** description of your issue. Please repeat and spell your last name and repeat your telephone number. Thank you.



## AFTER HOURS LOG

To promote safety and quick response time for First Responders, everyone coming into the Main Clubhouse **after 12 Noon** must sign the Logbook on the front desk. Since you may possibly be in the building alone, we ask that you sign in with your name, the area you are going to, time in AND please sign out upon exiting the building. Should an emergency arise, **this could save your life**, as the Responders need to know who is in the building and where you are located. We know it is an extra step for you, but we are working to ensure everyone's safety.

Thank you for your cooperation.



**April/May 2022**

**Articles are due February 18**

**New advertisers due February 9**

**Returning advertisers due February 16**

Email to: [newspaper@lauderdalewest.org](mailto:newspaper@lauderdalewest.org)

or drop off at room #121

The Newspaper Office is open

Monday, Wednesday, and Friday

from **9 AM** until **noon**

We can be reached at:

[newspaper@lauderdalewest.org](mailto:newspaper@lauderdalewest.org)

## NEWLY WIDENED DRIVEWAYS

*By Bernadette Brodmerkel*

Many residents are having their driveways widened. To accomplish this, sprinkler heads and pipes are destroyed and need to be replaced after the widening project is completed.

**GARY COX IRRIGATION**, is responsible to re-install sprinkler pipes and heads. He charges the resident for this job. Each job is priced differently according to the parts, supplies and labor that is involved.

Also, please understand after the irrigation job is complete, the resident is responsible to replace the sod. Thank you.



## POLE LIGHTS

If your pole light is not working, make sure the switch inside your house is on. If it still does not work after dark or it stays on during the day, call the **Maintenance Department at 954-473-2595**. They can also replace any missing or damaged numbers on your globe.

## GUTTERS & ROOFS

### ROOFS

**NO ONE** is permitted on your roof **EXCEPT LW APPROVED** contractors. If you hire a contractor to clean or repair your roof, and they damage your roof in any way, you are responsible for any and all repair costs. **RAIN GUTTERS**

All gutters are the responsibility of the owner. They must be kept clean, both inside and out – meaning the owner must remove, on a regular basis, all leaves and trees that may be growing out of the gutters. If the debris in the gutter causes damage to your roof or fascia board, you will be held responsible for all repair costs.

Gutters should be cleaned every other month, especially if you have trees near your homes.

## DRESS CODE

It has been noticed by many residents and Board Members that people are coming to our social functions dressed inappropriately for such occasions. Therefore, effective immediately, for all Party Time events, Professional Shows and other social activities, shorts worn by either men or women will not be permitted. Be advised that you will not be allowed into the activity. Please, let's dress appropriately!

## ! WARNING

It has been brought to our attention that a resident received a phone call from someone purporting to be a representative of FPL; stating that the resident was 2 months behind on their payments and that an order had been placed to turn off power to the home unless immediate payment was received. This resident was NOT past due on payments and fortunately did not give out financial information. **PLEASE** do not fall for a scam such as this. **NEVER** provide personal or financial information without first checking on the legitimacy of the call.

## Volunteers Make a Difference

Lauderdale West needs you! We are a Community run by residents. Our Board of Directors are all volunteers. There is always a need for many volunteers. Opportunities are here to work in an area of your choice; make new friends; learn a new skill or use the skills you have. You can work as much and as often as you would like. Call Pauline Gosselin at 954-473-8219 ext.127.

# HELPFUL INFORMATION

## ABOUT LIVING IN LAUDERDALE WEST

**LANDLORDS** Please remember that you cannot rent your property until you have owned it for one year. All tenants must complete an Application for Residency which is available on our website. All leases and lease renewals must be approved by the Board before the tenant can move in. Contact Director Marlene Newman for additional information.

**MAILBOX SAFETY** We recommend that you not place any outgoing mail in the mailbox in front of your home. We are aware of individuals removing that mail. You can safely deposit your outgoing mail in the blue Postal Service Mailbox located at the end of the parking lot of the Main Clubhouse or take it directly to any US Post Office. Incoming mail should be removed from your mailbox at your first opportunity.

**MODIFICATIONS** If you are planning to make any changes to your home, you must complete an Application for Modifications. All modifications must be approved by the Board before any work is started. Modifications may include A/C, windows, doors, patios, enclosures, electrical, plumbing, and widening of driveways. The City of Plantation requires permits for most modifications which includes plumbing and electrical work. Contact Director Kristi Woods for additional information.

**PARKING** Overnight parking is not permitted on any street in Lauderdale West. Parking at the Main Clubhouse and the Annex (Satellite Clubhouse) is limited to those using the clubhouse facilities, the pools/spas, or the tennis courts. Other parking requires written Board approval, and a limited parking permit is available. There is no overnight parking in **ANY** of our parking lots without prior permission to do so. A notice will be placed on illegally parked vehicles before being towed at the vehicle owner's expense. Follow the directional arrows in all parking lots to avoid a fine.

**SPEEDING** The speed limit in Lauderdale West is **25 miles per hour**. All our walkers and bike riders have the right of way. Slow down when you see them. Stop at all stop signs. Signal for all turns. Follow the directional arrows in all parking lots and drive slowly. Driving through the parking

lots as a short cut is not permitted. Violators will be fined. Plantation police are asked to monitor our roadways.

**TRASH** All trash must be placed in City of Plantation blue bags **at least 5 feet from your mailbox**. Trash pickup is on Tuesdays and Fridays. You are permitted to place trash out after 5 PM the night before.

**RECYCLE** All recycle items **MUST** be placed in City of Plantation clear bags or paper bags **at least 5 feet from your mailbox**. Recycle pickup is on **Tuesdays only**. Boxes must be flattened first and placed alongside the clear bags.

**BULK PICKUP** You may put large bulk items at the curb usually on the second Tuesday of the month. Please see the Newsletter for the exact date. **Black bags will not be picked up.**

---

### FYI - LW'S ACCOUNTANTS

Please be advised the accountants for LW are:

Juda.Eskew & Associates  
8211 W. Broward Blvd., Suite PH1 (5th floor)  
Plantation 33324  
954-577-9700

Mail your maintenance assessment to:  
Maintenance Assessments  
PO Box 189115  
Plantation 33318-9115

Payments are due on the **FIRST** of each month



**ATTENTION!**

**MONTHLY MAINTENANCE PAYMENTS are due on or before the first day of each month; NOT the 5th, NOT the 10th.**

If not paid by the 10th, a late fee will be assessed, and you will receive a letter from the LW Board of Directors. If payment is not made within 30 days, expect to receive a collection letter from the Lauderdale West attorneys. Once your account is turned over to our attorneys for collection, you will also be responsible for their fees (**\$195**) for the preparation and service of that collection letter plus FedEx postage. Please remember, all fees are subject to increase.



## TO OUR NEW RESIDENTS

*Carlina Black*

*Carlos Perez Gonzalez & Marisolá Granito*

*Ramon & Terri Rivera*



- To Marie Myers and Kerry Osborne for volunteering in the Applications and Approvals Office. Two wonderful ladies who are making that office even more efficient.
- To Anna Bender and the ladies on her committee for the fabulous Holiday and New Year's Eve Parties.
- To Lana Famiano and Connie Guzzi for another marvelous edition of the Lauderdale West News.
- To our Maintenance Crew: Edna, Pete, John G., John N., Danny, Mark, and Cary for all the hard work they do within Lauderdale West.



## VOLUNTEER NEEDED PAINTING ASSISTANT/CHAIRMAN

Our Painting Chairman, George Hill, would like to eventually retire. Therefore, we are looking for someone he can train to take over his position sometime next year. The job requires dealing with owners; walking around homes and plexes to inspect their condition; paperwork; computer skills and communicating with our painters. If you are interested, please contact George at 954-452-0821. Thank you.

## Please remember ... BE COURTEOUS

There is never a need to be rude to anyone, whether in person or on the phone. The Board Members and our Business Office Volunteers, Edna, our Maintenance Admin and the Maintenance Team are all busy working for you, the Lauderdale West Community. Please be courteous to them.

Unless you have an absolute emergency, during our regular business hours, your situation will be addressed the following workday.

If you have an active plumbing leak, turn off the water shutoff valve to that sink or toilet or at the main valve outside your home or plex. If you cannot physically turn off the valve, call a neighbor or friend to do it for you. Yelling and threatening our Maintenance Staff will not get your problem addressed any sooner.

Remember, be respectful and courteous!

## INHERITANCE OR FAMILY REAL ESTATE TRANSFERS

Lauderdale West is required to maintain correct, up-to-date information on all homeowners. If you inherit a plex or single-family home in Lauderdale West, you must notify the Applications/Sales Office immediately (954) 473-8219 Ext. 127. Before we can change the name in our records, we will need information from you, such as a completed application which can be found on our website. We will also need a copy of the death certificate and a copy of the legal papers giving you rights to the property.

When we have updated our records, you will be able to live here or sell the home. This also applies if you are transferring the property to another family member or a trust. Written Board approval is required of all owners regardless of how you acquired the property. We cannot issue a Certificate of Approval if we do not have the complete and correct information that can be found in the application. Remember, you cannot rent the property for one year after acquisition of title. Thank you for your cooperation.

## Be Aware **WEBSITE/** and **Beware SOCIAL MEDIA**

Please be aware, any method used by Lauderdale West to communicate with you will be by posting in the Lauderdale West News, on our existing Website, ([www.lauderdalewest.org](http://www.lauderdalewest.org)), communicated on Lauderdale West stationery, in our Email blasts or text messages or on the BlueStream Community Channel 901.

Any other online networks, Websites, Facebook pages, etc. are **NOT** sanctioned by Lauderdale West Community Association No. 1, Inc. Even though Lauderdale West may be included in the title and participants may be residents of Lauderdale West, they are **NOT** endorsed by and have nothing to do with Lauderdale West Community Association No. 1, Inc. **BE CAUTIOUS WHEN SHARING YOUR PERSONAL INFORMATION AND BE AWARE OF FALSE INFORMATION COMMUNICATED ON THESE SITES.**



### 3 things you can do to help protect your home network from cyber criminals



Use the highest security settings on your router and turn on encryption to make it harder for cyber criminals to get access.



Change default passwords on devices that connect to your network, such as a router, smart TV or video game console. The manufacturers' passwords may be available on the web.



Understand how your security cameras, connected appliances and media streaming devices collect and use your personal information.



### WATCH OUT FOR FRAUD SCAMS TARGETING OLDER AMERICANS

*AvMed Aspire Magazine – Summer 2021*

Fraudsters targeting older adults are becoming more creative. “Scammers stay on top of whatever is new, such as the popularity of Zoom, COVID-19 vaccines and online shopping and then move fast to create ploys that best fit the moment,” says Amy Nofziger, director of fraud victim support at AARP.



### VOICE AND TEXT MESSAGE SERVICE



Please add our Lauderdale West telephone number to your contacts to prevent our calls from being tagged as potential spam. It is 954- 473-8219.

If you subscribe to our text messages, please add our outgoing text number to your contacts. It is 844-500-8542. **DO NOT** reply to text messages with questions or comments. To keep costs down, we only pay for outgoing messages. If you have a question or comment, please contact the appropriate Director or our Webmaster. Director names and their areas of responsibility are listed in the LW News, on [www.lauderdalewest.org](http://www.lauderdalewest.org), and Blue Stream Channel 901. Our Webmaster can be reached by email at [webmaster@lauderdalewest.org](mailto:webmaster@lauderdalewest.org).



### UNLICENSED CONTRACTORS

When you hire someone to do work in your home, be sure to check their insurance and license. The person/company needs to have a current license issued by the City of Plantation if their business is in Plantation. Be sure to see a copy of their insurance to confirm they have coverage.

Many jobs require a permit from the City of Plantation. It is important that you do your research. Call the City before work begins to determine if you need a permit. **DO NOT** rely on your contractor to inform you of that fact.

Whatever you do, **NEVER** hire someone who just knocks on your door and offers to do work for you. This decision may cost you in the long run for poor workmanship and problems that could arise for which they cannot fix/pay. They may scam you and cause more damage to your property.

Do not wait until there is a problem and wish you had hired a licensed/insured worker.



The City of Plantation, in conjunction with the City of Sunrise, conducts Household Hazardous Waste (HHW) Collection Events. These events are open to residents of these cities only, free of charge with proof of residency.

Convenient drive-thru services provide staff to unload your hazardous waste; you are encouraged to remain in your vehicle. You are asked to keep the hazardous waste products in their original containers, or to label them clearly. All lids must be sealed tightly, and leaking containers should be placed in a large plastic container.

#### **Plantation Location**

Public Works Compound  
750 NW 91 Avenue  
Plantation, FL 33324

Hours: 9:00 AM – 1:00 PM

- February 5, 2022
- June 11, 2022
- August 13, 2022
- November 19, 2022

#### **Sunrise Location**

Public Works Complex  
10500 NW 55 Street  
Sunrise, FL 33351

Hours: 9:00 AM – 1:00 PM

- January 8, 2022
- April 23, 2022
- July 23, 2022
- October 22, 2022

Household Hazardous Waste (HHW) includes paint, tires, and similar materials. Electronic Materials include computers, computer monitors, televisions, printers, scanners and similar devices. Neither HHW nor Electronic Materials are collected as solid waste, recyclable, or bulk trash.

**ONLY** the **City of Sunrise** allows you to bring 3 boxes of paper to be shredded on-site.

#### **ALTERNATIVE WASTE DISPOSAL SITE**

The City of Plantation, in conjunction with Wheelabrator, offers all residents the opportunity to dispose of Yard Waste, Furniture, White Goods, Household Hazardous Waste, and Electronics at the following location. Proof of residency required.

#### **Wheelabrator South Broward**

4400 S State Road 7  
Davie, FL 33314  
954-581-6606

#### **Hours of Operation**

Saturdays – 8:00 AM – 4:00 PM  
Closed on Holiday weekends

#### **ELECTRONIC RECYCLING & DISPOSAL**

Free drop-off of certain electronics waste, specifically batteries, DVD players, speakers, stereos, VCRs, laptops, computers, wires and cables, battery backups, servers and monitors is available at the following location. Please call for specific drop-off dates.

#### **Urban Mining Residential Drop-Off**

3983 NW 19 Street  
Lauderdale Lakes, FL 33311  
954-906-1609

#### **Hours of Operation**

Tuesday – 7:00 AM – 11:00 AM  
Friday – 1:00 PM – 4:00 PM

#### **RESIDENTIAL MEDICAL WASTE DISPOSAL**

Prescriptions should be sealed with tape and placed into your blue garbage bag. **NEVER** flush medications down the toilet or sink. They will contaminate the drinking water supply.

Needles need to be placed into a Sharps container and can be dropped off at:

- Prescription Pad Pharmacy, 333 NW 70 Avenue, Ste 102, 954-791-2000
- Cost is \$5/2 containers. (Cost is waived if a new container is purchased.)

For more information on the disposal of prescription medications, please contact the Broward County Health Department, 954-467-4700.

## BULK & GARBAGE PICKUP

### Bulk Pickup:

**Tuesday, February 8, 2021**

**Tuesday, March 8, 2022**

*Please* **DO NOT** put Bulk Pickup items out until Monday afternoon **AFTER 5 PM** the day before Bulk Pickup is scheduled. Place Bulk Pickup at least **5 feet AWAY** from the mailboxes, trees, and street signs.

**Thank you for your cooperation.**

**BULK PICKUP** – Our next Bulk Pickups will be Tuesday, February 8, and Tuesday, March 8. The following items will not be accepted: batteries, **black bags**, chemicals, concrete including bricks or pavers, electronics, fencing, fluorescent bulbs, glass not properly wrapped, insecticides, oils and paints, paint cans, x-rays, construction materials, tires. (For disposal of these items, refer to the article on Household Hazardous Waste & Electronic Recycling on page 14). To ensure the safety of Waste Management drivers, mirrors, glass tabletops, windowpanes, plate glass, etc., will only be picked up if they are properly and safely placed in a rigid container. Any broken glass must be placed into a secure container and marked as glass. If items are small enough, they must be put in clear bags. **Black bags will not be accepted.** Empty cardboard boxes will be accepted.

**GARBAGE PICKUP** – On Tuesday - blue bags and clear recycle bags should be placed **at least 5 feet AWAY** from your mailbox. On Friday – blue bags only, also 5 feet from your mailbox. Bags must not be put out until **5 PM** the night before pickup.



## The 7 Steps to Responsible Recycling

Here are 7 rules to live by:

**1. “EMPTY AND CLEAN IF YOU WANT TO BE GREEN”**

Do not contaminate other recycling materials with food particles and liquids. This can damage containers and make them unfit to be recycled.

**2. “DON’T BAG RECYCLABLES”**

Only put loose items into recycling bag. The recycling facility does not have time to untie bags, so they will be sent to the landfill.

**3. “COATED PAPER CAUSES PROBLEMS”**

Waxy paper cups and shiny or sparkly gift bags are examples of coated paper. If they have been treated or coated, they cannot be recycled.

**4. “GREASE IS GROSS”**

Oil and water don’t mix; when the grease from your recyclables transfers to other paper goods, it can spoil the batch of mulch at the paper mill. Parts soiled by grease should be cut out of paper materials. Toss only clean cardboard into recycling.

**5. “IF IT TANGLES, THEN IT MANGLES”**

Tanglers are items that can get stuck in the equipment at a recycling facility. Don’t recycle ropes, strapping, zip-ties, hoses, wires, chains, cords.

**6. “DON’T BE A DANGEROUS DUMPER”**

Certain items can be dangerous when mixed with recycling: batteries, light bulbs, medications and lighter fluids are examples of unsafe items.

**7. “IF IN DOUBT, THROW IT OUT”**

Do not add to the financial and environmental cost of trucking garbage from recycling facilities to landfills.



## TRASH PICKUP

## IMPORTANT MESSAGE ABOUT GARBAGE & TRASH PICKUP

The Post Office has asked that we **NOT** place our trash and recycle bags against the mailbox posts. These bags should be **at least five feet away** on the driveway or lawn. Bulk trash items should be even farther away and not close to any trees or other objects that may interfere with the grabber arm used to pick up the bulk trash.



## Landscape & Yard Waste Disposal Options

### Curbside Disposal

Residents may place small yard waste that will fit inside a bag, such as leaves, shrubbery, small branches, weeds, and grass, **into clear yard bags**.

- These items will only be removed on your scheduled bulk removal dates and only when placed in clear bags. **Black trash bags are not permitted and will not be picked up.**
- Black bags that are left out on the swale will be issued a notice by Code Enforcement.
- On either of their two garbage days, residents may put out a clear yard bag with yard debris as long as they **tie an unused Plantation blue garbage bag onto each clear bag**. Otherwise, residents may choose have their clear bags picked up on their regularly scheduled bulk pick-up day.
- Palm fronds and large branches must be tied into bundles (not to exceed six (6) feet or 40 pounds), and placed alongside blue bags on garbage days.

• For a nominal fee, yard waste may be brought to the City's Horticultural Recycling Center, located at 750 NW 91st Avenue, off Cleary Boulevard. For a list of acceptable yard waste and applicable fees, please visit the Horticultural Recycling Center.

**Homeowners who leave black bags or unacceptable items on swales after bulk pick up will be issued a citation by Code Enforcement.**

### Clear Bags for Yard Waste & Leaves

The following locations stock clear bags that are acceptable for yard waste disposal.

- All Plantation Publix Stores (at Customer Service)
- Home Depot, Sawgrass  
12525 W. Sunrise Blvd  
Sunrise, FL 33323

As the City becomes aware of additional locations, they will be posted online.

## WOMEN OF LAUDERDALE WEST

*By Pinky Trapani, President 954-472-1652*

Wow! We surely did it. What a beautiful sight as all 107 presents were loaded into the van going to the "kids". We also had some extra gifts ... just in case. With these gifts, a check was given to Kevin (Director of Education Services) for the milk and cookie party. This was a donation given by Scott Biederman. He also donated many books for their library. Santa arrived on a fire engine with sirens blaring and the clanging of the bell. The excitement and joy for these unfortunate children for this very special time, even for a little while can never be put into words. Blessing to all of you for helping to make this possible.

The January luncheon was the beginning of our 5th year as Women of Lauderdale West for "Kids". Who would have believed we started out with 35 women in Room 111 with attorney Mr. Steve Weinberg guiding us all the way. Now, we are 120 strong. Our January theme was "All the colors of the Rainbow." Our guests were Attorney Steve Weinberg, Councilman Nick Sortel, Kevin Bocheneh from "Kids," and Planning and Zoning Board member, Jay Stahl."

Our February luncheon is the celebration of Valentine's Day for all us sweet ladies. This calls for Pizza

and a nice healthy salad.

March, being good old St. Patrick's Day and not being able to have corned beef and cabbage, we will bring on the chicken from Pollo Tropical.

A big note for you ladies! April calls for all of you to start getting ideas for your Easter Bonnet. The contest will have cash prizes for 1st, 2nd and 3rd place. And May will be a fun month as we celebrate the Kentucky Derby with another hat competition with cash prizes. May is also a time to reflect and remember Mothers' Day!

This being all the news for now, I sign off with gratefulness to the Board of Directors, the Newspaper staff doing a fabulous job, our Jeff Bender for getting us through a rough 2021 in getting the word out with all the necessary information. So please continue to watch channels 901 and 902. Stay informed with the Lauderdale West Newspaper.

Thank you to Jan Heinrich for the great idea of beginning our luncheons with an ice breaker to get to better know each other. A big thank you to all our members for taking this journey with us. And ... if you're not already a part of this great organization, why not join us?

Blessings to you and yours.





# MARDI GRAS

Hooray! We are doing something new this year. On February 12, 2022, at 8 PM we will be celebrating **MARDI GRAS** instead of St. Valentine's Day in the JBA auditorium. We are looking forward to seeing our Lauderdale West family dancing and wearing beads and masks. Flyers will be posted on the website, channel 901 and the Clubhouse in January.



Each year we build and paint toys for children to be distributed during the holiday season. We need woodworkers and people to paint those toys. Why not join us for this wonderful cause? We are in the Wood Shop Monday through Friday from 8:00 AM to 1:30 PM. Hope to see you there.



A discussion was held by the Board to have a Karaoke Night in the Clubhouse. We would like to know if there is any interest by our residents to have this activity. It would be a fun evening for everyone who attends. You can step up to the microphone to participate or just attend and watch. If you are interested in this activity, please contact via email, nna Bender at [anna@mark1repair.com](mailto:anna@mark1repair.com).

## still

original poetry by Lydia Shutter



the air seems to vibrate  
 there is a mere insinuation of music  
 an oldie but goodie  
 while a sort of phantasmagoria  
 plays before my eyes  
 like dust dancing through the sunlight  
 but it is night  
 the sound of my own breathing  
 hypnotizes me  
 till i tumble into a dream  
 i must reluctantly admit  
 the truth...  
 it's all about you

**Happy  
 Valentine's Day, LW!**

still

© 2020 Lydia Shutter

## LW CLUBS, GROUPS and ACTIVITIES

<u>CLUB</u>	<u>CONTACT</u>	<u>PHONE</u>	<u>EMAIL</u>	<u>TIME/DAY</u>	<u>LOCATION</u>
Bayberry Garden Circle	Judy Watson	954-547-1007		10 AM 3 <sup>rd</sup> Thursday	Room 208
Cards	Sandy Spector	954-423-3293		1 PM Tue & Wed	Room 208
Ceramics	Anne Karic	305-766-6462		7 PM Wednesday	Room 106
Hadassah	Susan Rose	954-424-8494	<a href="mailto:mssrose@aol.com">mssrose@aol.com</a>	11:30 AM 3 <sup>rd</sup> Tuesday	JBA
Kalookie	Carmen Delisser	754-235-4518	<a href="mailto:carmendelisser@yahoo.com">carmendelisser@yahoo.com</a>	7-9:30 PM Friday	Room 208
Low Impact Exercise	Linda Hofstetter	954-632-1752		9-10 AM Mon thru Fri	Room 111
Mah Jongg	Bobbie Kalkstein	954-472-5566		Noon Friday	Room 206
Ping Pong	Stu Sosniak	954-881-1875		Call for Pickup Game	Room 207
Poker Players	Joe Gillardi	954-475-1944			Room 208
Pool Players	Paul Wagner	954-778-0135		1-3 PM Mon & Fri	Pool Room 202
Pool Players	Paul Wagner	954-778-0135		7-9 PM Thursday	Pool Room 202
Scrapbooking Workshop	Cyndie Schmidt	843-452-4972	<a href="mailto:cynthiascrapbooks@gmail.com">cynthiascrapbooks@gmail.com</a>	10 AM 3 <sup>rd</sup> Thursday	Room 106
Sewing Circle	Shirley Jenkins	954-314-7318	or 516 376-8318 (c)	1 PM Monday	Room 106
Social Tennis	Sandy Roberts	954-260-0037	<a href="mailto:sandraroberts8531@gmail.com">sandraroberts8531@gmail.com</a>	9 AM Sun, Tue, Thur, Sat	Tennis Courts
Spanish Club	Aura Giron	321-412-1557		7 PM 2 <sup>nd</sup> Thursday	Room 113
Stained Glass	Brunia Duval	954-476-4226	<a href="mailto:bruniaduval@yahoo.com">bruniaduval@yahoo.com</a>	1-3 PM Wed & Fri	Room 106
Women of LW, Inc.	Pinky Trapani	954-472-1652		11 AM 1 <sup>st</sup> Tuesday	JBA
Wood Shop	Steve Taylor	954-473-8233		9-Noon Mon thru Fri	Room 104
Yoga & Chair Yoga	Leila Maisa	954-662-4026	<a href="mailto:Immaisa@hotmail.com">Immaisa@hotmail.com</a>	1 PM Mon & Fri	Room 113

# HADASSAH *Happenings...*

*By Susan Rose, President - 954-288-8494 - Mssrose@aol.com*

The new year has started, and we have some wonderful plans. We are still following the recommended guidelines to maintain a healthy environment for our Lauderdale West families and guests. February is a short month, but we are packing it with many great activities. February 8th is our lunch bunch at the Olive Garden in The Fountains of Plantation. Please call Dorothy Royce @ 973-715-7811 and let her know if you are coming. You may also leave a text or voice message. You pay for your own lunch, and we ask you to make a \$5 donation to Hadassah. Invite a friend for a nice afternoon out. Our general meeting is on February 15th. The Chinese Lunar New Year is in February, so we will take orders for a Vegetarian Chinese lunch: Vegetable Chow Mein, Lo Mein, or Egg Foo Young. The cost is \$10 and includes a beverage and dessert. RSVP to Karen Pellegrini by February 10th, at 954-205-1939. February 20th will be BINGO again at 5:30 PM in the JBA Auditorium at Lauderdale West. The games begin promptly @ 6:00 PM. The cost is \$12 for the Bingo pack plus extra jackpot cards. Light refreshments are provided with beverages. Encourage your family and friends to join us too.

I'm hoping for an early spring and beautiful weather. March 1st is our Board Meeting at 9:30 AM in Room 113. Planning for the year's activities is ongoing. We are always looking for new ideas. Lunch Bunch will be on March 8th, at Chill and Grill Pita, a Mediterranean restaurant. Try something new and different! RSVP to Dorothy Royce @ 973-715-7811, please leave a message. Our general meeting will be on March 15th. It is not Halloween but let's see who is brave enough to come in COSTUME. Prizes will be awarded.

We love getting together! It feels so good to meet new people and socialize with friends. We are also trying to raise funds to allow Hadassah to continue their life-saving research, advocacy, and medical treatments to save lives.

*Please note, we meet in Lauderdale West, but our chapter's membership is open to anyone who would like to join us, regardless of your religious beliefs or where you live. We only ask that you adhere to Hadassah's belief system that Israel has a right to exist. We look forward to you joining us.*



## BLACK RODENT BAIT BOXES



We live in a water community and wherever you have water, you are more susceptible to rats. Throughout our Community, there are rodent bait boxes set up by our pest control company to deter/kill rats/rodents. Each box is numbered and has been strategically placed on the property against the house.

- Do not move the boxes. The boxes **MUST** remain where they have been placed. Each box is marked on a map and must remain in that spot.
- You will be **fin**ed if the box on your property is not in its designated position.
- **Do not TOUCH the boxes.** They are filled with **poison**.
- If a rodent problem occurs, call maintenance at 954-473-2595 and report it.
- Broken or missing bait box replacement cost is \$22. We will charge the resident when one is missing.



## ATTENTION *all* ANIMAL OWNERS!



Lauderdale West is a **NO PET** Community. The Board continues to receive complaints about the increase in the number of animals on our property and residents who do not leash or clean up after their animals. Animal noise, i.e. barking, whining, etc. has also become an issue and is creating a nuisance in the Community.

### SERVICE AND EMOTIONAL SUPPORT ANIMALS

Service and emotional support animals are not considered pets, so restrictions that apply to pets do not necessarily apply to them. Emotional support animals are companion animals that provide therapeutic benefits for people with mental disabilities or medical issues. These animals do not have to be trained, unlike service animals that are trained individually to perform specific tasks to help a person who is disabled. You must not discriminate against someone with one of these animals any more than you would if someone were in a wheelchair.

### IF YOU REQUIRE THE SERVICES OF A SUPPORT OR COMFORT ANIMAL

In Lauderdale West, there are obligations you must abide by in order to receive written Board approval to have the animal in your home. There are new laws in Florida for assistance animals. For each animal, you are required to sign and have notarized a Request for Animal Accommodation stating you understand your responsibility as an animal owner and to provide accompanying docu-

mentation such as:

- Register your animal with the Applications and Approvals office.
- A doctor's letter stating your need for such an animal.
- A current dog license.
- Proof that vaccinations/shots are up to date for your animal.
- A homeowner's insurance policy with liability coverage.

All animals must be personally attended to and on a leash when outside the home. They may not be tethered to a tree, porch, or patio. If the animal becomes a nuisance or threat to the Community, it must be removed.

In addition to the foregoing, animal owners **must:**

- Be responsible for animals that reside in their home.
- Follow all City and County Ordinances.
- Clean up after their animal anywhere in Lauderdale West. Be advised, you must properly dispose of the bag of animal waste in **YOUR** trash container, not in a Community trash can. Do not put it down a drainage grate or throw it in the lakes or canals. This becomes a bacterial hazard to our water system.

By following these guidelines, everyone benefits including your animal. Failure to register and meet the above requirements will result in fines. Thank you for your cooperation.

## MAINTENANCE PROCEDURES

If you have a situation which requires the Maintenance Department, you **MUST** contact Edna in the Maintenance Office directly at 954-473-2595 or by email: [maintenancedept@lauderdalewest.org](mailto:maintenancedept@lauderdalewest.org). **DO NOT** address our maintenance staff concerning your issue as this will only delay your job getting done.

If the work to be done is outside your home, you do not need to be at home when the work is done.

**EMERGENCY PROCEDURES:** Maintenance staff will no longer be available for emergency calls after business hours or on weekends. If you have a plumbing or electrical emergency after business hours or on a weekend, you must call an outside contractor at your own expense. If you have a "medical emergency", please call 911 immediately.

**REMEMBER:** Contact Edna in the Maintenance Office at 954-473-2595, Monday – Friday 8 AM – 4 PM or email: [maintenancedept@lauderdalewest.org](mailto:maintenancedept@lauderdalewest.org) and get a work order number.



## SWIMMING POOL HOURS

The main pool is open from 6 AM to 9 PM and you must leave the pool area by that time. **Satellite pool is also open.** Thank you for your understanding.

## SWIMMING POOL RULES

This is just a reminder: everyone must follow the posted pool rules.

- There is no lifeguard on duty; use of the pool and pool area is at your own risk.
- Only residents and their immediate family are allowed in the pool area.
- **NO** animals are allowed in the pool area or the Patio Plaza outside the pool area.
- The pool gate must remain closed. Do not prop open a pool area gate.
- Showering is required **BEFORE** entering the pool per the Broward Department of Health.
- Allow residents who are swimming laps the right of way.
- No diving is allowed.
- Children must be supervised by an adult, **at all times**, in the pool area, especially when they are in the water – **THERE IS NO LIFEGUARD ON DUTY.**
- No child under the age of 16 is allowed in the spa/hot tub.
- No jumping, running or loud noise in the pool area.
- No food, drink or glass is allowed in the **pool area.** Plastic water bottles are allowed.
- Vacate the pool area during rain, thunder, or lightning – sitting under the metal awnings is dangerous.
- Incontinent or non-trained individuals must wear swim diapers.
- No smoking or vaping is allowed in the pool area.

The Lauderdale West Community Association reserves the right to deny the use of the pool or pool area to anyone at any time for just cause.

If you fail to follow the above rules, you will be asked to leave the pool area and your pool privileges may be revoked. If the posted rules and the rules set forth above are violated, the pool will be closed.

## ANNEX/SATELLITE POOL

The spa and pool at the Annex/Satellite Clubhouse have been completed and look terrific. If you haven't been there yet, take an opportunity to check them out.



## GYM RULES

1301 NW 87 Lane

Hours:

7 AM – 9 PM

1. Wear proper attire. No swimsuits or flip flops are allowed in the gym.
2. No food or beverage, except water in plastic bottles, is allowed in the gym.
3. No one under the age of 18 is allowed in the gym.
4. The gym is for the exclusive use of Lauderdale West residents. Outside guests are not allowed.
5. Use of the equipment while alone is discouraged. Use the "buddy system" to be safe.
6. The gym is under camera surveillance. Disregard of any of these rules may result in a fine or removal of these privileges.

## PROPER GYM ETIQUETTE

With all the flus and viruses going around, it is now more important than ever that you **clean the equipment before and after each use.** Antibacterial wipes, Lysol and a paper towel dispenser are available for your use. Please use them and dispose of them properly!

Remember, if there is someone waiting for a machine that you are using, you are allowed a total of 20 minutes on that machine, not 20 minutes after that person arrives. Be courteous. It may be you waiting for that treadmill next time!



### Irrigation Issues

Aside from the timers that need adjustments, most of our irrigation calls are for water hitting cars and driveways.

Please understand we cannot help when it is windy and sprinklers are on. I was advised that our sprinkler heads are approximately 12 inches from driveways. Each time Gary Cox Irrigation receives a work order about “sprinkler adjustments” and there is nothing wrong, Lauderdale West is charged a fee.

Our monthly maintenance agreement does not cover windy days. Most of us use the garage for our cars; those who don't will be subject to water hitting the cars or driveways.

My advice, get a shammy and wipe down your car. This will clean water spots. Also, if water spots are on your windows, CLR will clean it up beautifully. It does take a little elbow grease, but I can tell you from my own experience, it works.

Home Depot sells sprinkler guards for approximately \$5.00 each. Placing these guards will prevent the sprinklers from spraying your car or driveway.

We do not have on-site technicians. They are here 2 weeks a month. You will not be getting immediate response to your request, but issues will be addressed. If there is an emergency, technicians will be here.

### Exterminators

Beach Environmental is very busy with termite fumigation. We have had an unusual infestation of termites this year, so there is no such thing as ASAP! After inspection, and it was determined your home has termites, you will not be tented immediately. If you must vacate your home because it is being tented, Lauderdale West will not pay for your housing/hotel. You are responsible for that cost.

The outside of your home is sprayed monthly. If you have an issue with ants and spiders, please keep a can of Raid on hand; Terro bait boxes work as well. We will not be sending Beach technicians out mid-schedule. Also understand, there are so many different types of bugs outside your home, each of them has a job to do. Of course, if it is determined that these bugs pose a health issue (bees, wasps, red ants) these will be addressed.

If you would like the inside of your home sprayed, Beach Environmental charges a special rate to Lauderdale West residents of \$22 per month for a yearly contract, paid by cash or check. **If you choose to pay with a credit card, the cost is \$25 per month.** And if you pay a year in advance the cost is only \$20 per month.

We have snakes in our area. Home Depot has a product called Snake Away. Buy this and keep it in your home just in case. This is a very effective product.

### Wildlife

Please do not feed ducks or geese. They are able to find their own food. They will eat what you give them and leave a big mess afterwards. We then receive calls from residents complaining about the mess which is not our responsibility. **STOP FEEDING THE WILDLIFE!**



## AVOID SELLING DELAYS

### Applications and Approvals

If you are planning on selling, please clean up the outside of your home. Any plants, trees or bushes on the common area must be removed; awnings cleaned and painted; flower beds weeded; and patios and driveways pressure washed. The most common holdup in processing the sale of your home is the seller's delay in cleaning up the outside of their home. Be proactive – avoid delays and clean up now!

## PLUMBING PROBLEMS

To avoid plumbing problems, **DO NOT** flush cigarette butts, flushable cleaning wipes, paper or cloth towels or diapers. Please, **ONLY** flush toilet paper.

## WATER SHUT-OFF VALVES

If you are remodeling a kitchen or bathroom, it is your contractor's responsibility to move the water shut-off valves for easy access.

## LOST & FOUND

If you have lost items in our Community check with the Lobby Assistant in the Main Clubhouse for those lost items.

## ROOM RENTAL PROCEDURE

Lauderdale West only rents out Room 113 for immediate family functions for up to 50 people. The cost to rent room 113 is \$100; set up and cleanup is \$50; security deposit is \$500, payable in three separate checks.

The paperwork required to rent room 113 is as follows: photo ID; Declaration page for your Homeowners/Renters Insurance; three checks as stated above.

If you are interested, please call the Clubhouse any morning from 9 AM until Noon and you will be directed to the room coordinator.

## NO SIGNS ALLOWED

**SIGNS** of any kind, are NOT permitted on Lauderdale West property, except during elections. Candidates' signs may be erected 10 days prior to an election and must be removed within 7 days after an election. Lauderdale West property includes all areas outside your home. This includes any grassy areas, your driveway, any public area, including stop signs, trees, and utility poles. Signs for Open Houses, Garage Sales, Parties, Greetings, etc. **are not allowed.**

**Signs will be removed, and the owner will be subject to fines.**

## PLEX FOR SALE

1 BR, 2 BATH Plex WIDE LAKE VIEW  
8555 NW 12 STREET (clubhouse close)

**FOR SALE BY OWNER**

BATHROOMS UPDATED &

A/C IS ONLY 6 YEARS OLD

**READY FOR IMMEDIATE OCCUPANCY**

**\$169,500**

**CALL DOUG AT 954-471-4226**

## Condo Programs Available



Federated Mortgage Services

Licensed Lender 284131

**Call Today:**

**Crissy, NMLS# 447937**

Reverse Mortgage Specialist

**Phone: 954-290-1243**

[Kcrissy@bellsouth.net](mailto:Kcrissy@bellsouth.net)

Every homeowner who is at least **55** years of age should know about **Revers Mortgage loans!**

~ Purchase & Refinance ~



T.M.

**RALPH**

FUNERAL HOMES

FAMILY OWNED AND  
OPERATED SINCE 1965

"YOUR LOCAL FUNERAL HOME"

*Local and Out of State Burial*

*Cremation Arrangements*

*Providing Service to All Faiths*

Thomas M. Ralph ♦ Judith C. Ralph  
Owners and Directors

Plantation Funeral Home

7001 NW 4th Street  
Plantation, FL 33317

Also located at:



Sawgrass / Weston

371 NW 136th Avenue  
Sunrise, FL 33325

(954) 587-6888

[www.tmralfh.com](http://www.tmralfh.com)

Online funeral information and Prearrangements

<b>Wednesday</b>	<b>Thursday</b>	<b>Friday</b>	<b>Saturday</b>	M A R C H  2 0 2 2
<p><b>2</b> Ash Wednesday</p> <p>111 9-10 am Low Impact Exercise 104 8-1:30 Wood Shop 106 1 pm Stained Glass 208 1 pm Cards BC 6:30 pm Bocce 106 7 pm Ceramics</p>	<p><b>3</b> Caregiver Appreciation Day</p> <p>111 9-10 am Low Impact Exercise 104 8-1:30 Wood Shop Satl 9 am Social Tennis 113 9:30-10:30 am Blood Pressure 208 10:30 am Cards 202 7-9 pm Pool Playing</p>	<p><b>4</b> World Day of Prayer</p> <p>111 9-10 am Low Impact Exercise 104 8-1:30 Wood Shop 206 Noon Mah Jongg 106 1 pm Stained Glass 113 1-2 pm Yoga &amp; Chair Yoga 202 1-3 pm Pool Playing 208 7 pm Kalookie</p>	<p><b>5</b> Multiple Personality Day</p> <p>Satl 9 am Social Tennis</p>	
<p><b>9</b> Barbie Day</p> <p>111 9-10 am Low Impact Exercise 104 8-1:30 Wood Shop 106 1 pm Stained Glass 208 1 pm Cards BC 6:30 pm Bocce 106 7 pm Ceramics</p>	<p><b>10</b> Popcorn Lover's Day</p> <p>111 9-10 am Low Impact Exercise 104 8-1:30 Wood Shop Satl 9 am Social Tennis 113 9:30-10:30 am Blood Pressure 208 10:30 am Cards 202 7 pm Pool Playing 113 7-9 pm Spanish Club</p>	<p><b>11</b> Johnny Appleseed Day</p> <p>111 9-10 am Low Impact Exercise 104 8-1:30 Wood Shop 206 Noon Mah Jongg 106 1 pm Stained Glass 113 1-2 pm Yoga &amp; Chair Yoga 202 1-3 pm Pool Playing 208 7 pm Kalookie</p>	<p><b>12</b> Genealogy Day</p> <p>Satl 9 am Social Tennis</p>	
<p><b>16</b> Giant Panda Bear Day</p> <p>111 9-10 am Low Impact Exercise 104 8-1:30 Wood Shop 106 1 pm Stained Glass 208 1 pm Cards BC 6:30 pm Bocce 106 7 pm Ceramics <b>113 7 pm LW Board Meeting</b></p>	<p><b>17</b> St Patrick's Day</p> <p>111 9-10 am Low Impact Exercise 104 8-1:30 Wood Shop Satl 9 am Social Tennis 113 9:30-10:30 am Blood Pressure 106 10-3 Scrapbooking 205 10 am Bayberry Garden Circle 208 10:30 am Cards 202 7-9 pm Pool Playing</p>	<p><b>18</b> Awkward Moments Day</p> <p>111 9-10 am Low Impact Exercise 104 8-1:30 Wood Shop 206 Noon Mah Jongg 106 1 pm Stained Glass 113 1-2 pm Yoga &amp; Chair Yoga 202 1-3 pm Pool Playing 208 7 pm Kalookie</p>	<p><b>19</b> International Sports Car Racing Day</p> <p>Satl 9 am Social Tennis</p> <p style="text-align: center;"><b>JOHNNY ROGERS TRIO</b></p> <p style="text-align: center;"><b>8:00 PM - JBA</b> <b>\$10 Residetns - \$17 Guests</b> <b>ID Required</b></p>	
<p><b>23</b> National Puppy Day</p> <p>111 9-10 am Low Impact Exercise 104 8-1:30 Wood Shop 106 1 pm Stained Glass 208 1 pm Cards BC 6:30 pm Bocce 106 7 pm Ceramics</p>	<p><b>24</b> National Cheesesteak Day</p> <p>111 9-10 am Low Impact Exercise 104 8-1:30 Wood Shop Satl 9 am Social Tennis 113 9:30-10:30 am Blood Pressure 208 10:30 am Cards 202 7-9 pm Pool Playing</p>	<p><b>25</b> Feast of the Annunciation</p> <p>111 9-10 am Low Impact Exercise 104 8-1:30 Wood Shop 206 Noon Mah Jongg 106 1 pm Stained Glass 113 1-2 pm Yoga &amp; Chair Yoga 202 1-3 pm Pool Playing 208 7 pm Kalookie</p>	<p><b>26</b> Live Long and Prosper Day</p> <p>Satl 9 am Social Tennis</p>	
<p><b>30</b> I am in Control Day</p> <p>111 9-10 am Low Impact Exercise 104 8-1:30 Wood Shop 106 1 pm Stained Glass 208 1 pm Cards BC 6:30 pm Bocce 106 7 pm Ceramics</p>	<p><b>31</b> World Backup Day</p> <p>111 9-10 am Low Impact Exercise 104 8-1:30 Wood Shop Satl 9 am Social Tennis 113 9:30-10:30 am Blood Pressure 208 10:30 am Cards 202 7-9 pm Pool Playing</p>			

# 2022

# FEBRUARY



Flower Of The Month:  
VIOLET

Sunday	Monday	Tuesday
<p>PLEASE NOTE</p> <p>Since this calendar must be prepared weeks in advance, there may be last-minute changes. We suggest you verify dates on In-House Channel 901.</p> <p>Revised 01-05-2022</p>	<p>KEY TO LOCATIONS</p> <p>BC = Bocce Court EXT = Outside of Lw JBA = Auditorium LIB = Library SATL = Satellite TO = Ticket Office</p>	<p><b>1</b> Chinese New Year</p> <p>111 9-10 am Low Impact Exercise 104 8-1:30 Wood Shop Satl 9 am Social Tennis JBA 11 am Women of LW, Inc 208 1 pm Cards</p>
<p><b>6</b> Super Bowl Sunday</p> <p>Satl 9 am Social Tennis</p> 	<p><b>7</b> Send a Card to a Friend Day</p> <p>111 9-10 am Low Impact Exercise 104 8-1:30 Wood Shop 108 1 pm Sewing Circle 202 1-3 pm Pool Playing 208 7 pm Cards</p>	<p><b>8</b> National Kite-Flying Day</p> <p>111 9-10 am Low Impact Exercise 104 8-1:30 Wood Shop Satl 9 am Social Tennis 208 1 pm Cards</p> <p><b>BULK PICKUP</b></p>
<p><b>13</b> World Radio Day</p> <p>Satl 9 am Social Tennis</p> 	<p><b>14</b> Valentine's Day</p> <p>111 9-10 am Low Impact Exercise 104 8-1:30 Wood Shop 108 1 pm Sewing Circle 202 1-3 pm Pool Playing 208 7 pm Cards</p>	<p><b>15</b> Childhood Cancer Day</p> <p>111 9-10 am Low Impact Exercise 104 8-1:30 Wood Shop Satl 9 am Social Tennis 208 1 pm Cards</p> 
<p><b>20</b> Love Your Pet Day</p> <p>Satl 9 am Social Tennis</p> 	<p><b>21</b> Presidents' Day</p> <p>111 9-10 am Low Impact Exercise 104 8-1:30 Wood Shop 108 1 pm Sewing Circle 202 1-3 pm Pool Playing 208 7 pm Cards</p>	<p><b>22</b> National Margarita Day</p> <p>111 9-10 am Low Impact Exercise 104 8-1:30 Wood Shop Satl 9 am Social Tennis 113 11 am Women of LW Bd Mtg 208 1 pm Cards</p>
<p><b>27</b> National Pokemon Day</p> <p>Satl 9 am Social Tennis</p> 	<p><b>28</b> Rare Disease Day</p> <p>111 9-10 am Low Impact Exercise 104 8-1:30 Wood Shop <b>TO 9:30-11:30 Ticket Office Open</b> 108 1 pm Sewing Circle 202 1-3 pm Pool Playing 208 7 pm Cards</p>	



<b>Wednesday</b>	<b>Thursday</b>	<b>Friday</b>	<b>Saturday</b>
<p><b>2</b> Groundhog Day</p> <p>111 9-10 am Low Impact Exercise                      104 8-1:30 Wood Shop                      106 1 pm Stained Glass                      208 1 pm Cards                      BC 6:30 pm Bocce                      106 7 pm Ceramics</p>	<p><b>3</b> Women Physicians Day</p> <p>111 9-10 am Low Impact Exercise                      104 8-1:30 Wood Shop                      Satl 9 am Social Tennis                      113 9:30-10:30 am Blood Pressure                      208 10:30 am Cards                      202 7-9 pm Pool Playing</p>	<p><b>4</b> World Career Day</p> <p>111 9-10 am Low Impact Exercise                      104 8-1:30 Wood Shop                      206 Noon Mah Jongg                      106 1 pm Stained Glass                      113 1-2 pm Yoga &amp; Chair Yoga                      202 1-3 pm Pool Playing                      208 7 pm Kalookie</p>	<p><b>5</b> National Weatherperson Day</p> <p>Satl 9 am Social Tennis</p>
<p><b>9</b> National Pizza Day</p> <p>111 9-10 am Low Impact Exercise                      104 8-1:30 Wood Shop                      106 1 pm Stained Glass                      208 1 pm Cards                      BC 6:30 pm Bocce                      106 7 pm Ceramics</p>	<p><b>10</b> World Pulses Day</p> <p>111 9-10 am Low Impact Exercise                      104 8-1:30 Wood Shop                      Satl 9 am Social Tennis                      113 9:30-10:30 am Blood Pressure                      208 10:30 am Cards                      202 7 pm Pool Playing                      113 7-9 pm Spanish Club</p>	<p><b>11</b> Women in Science Day</p> <p>111 9-10 am Low Impact Exercise                      104 8-1:30 Wood Shop                      206 Noon Mah Jongg                      106 1 pm Stained Glass                      113 1-2 pm Yoga &amp; Chair Yoga                      202 1-3 pm Pool Playing                      208 7 pm Kalookie</p>	<p><b>12</b> Darwin Day</p> <p>Satl 9 am Social Tennis</p> <div data-bbox="1328 705 1484 793" data-label="Image"> </div> <p><b>MARDI GRAS PARTY</b></p> <p>8:00-11:30 PM - JBA                      \$10 Residents - \$15 Guests</p>
<p><b>16</b> National Almond Day</p> <p>111 9-10 am Low Impact Exercise                      104 8-1:30 Wood Shop  <b>113 10 am LW Board Meeting</b>                      106 1 pm Stained Glass                      208 1 pm Cards                      BC 6:30 pm Bocce                      106 7 pm Ceramics</p>	<p><b>17</b> Random Acts of Kindness Day</p> <p>111 9-10 am Low Impact Exercise                      104 8-1:30 Wood Shop                      Satl 9 am Social Tennis                      113 9:30-10:30 am Blood Pressure                      106 10-3 Scrapbooking                      205 10 am Bayberry Garden Circle                      208 10:30 am Cards                      202 7-9 pm Pool Playing</p>	<p><b>18</b> National Drink Wine Day</p> <p>111 9-10 am Low Impact Exercise                      104 8-1:30 Wood Shop                      206 Noon Mah Jongg                      106 1 pm Stained Glass                      113 1-2 pm Yoga &amp; Chair Yoga                      202 1-3 pm Pool Playing                      208 7 pm Kalookie</p>	<p><b>19</b> Tug of War Day</p> <p>Satl 9 am Social Tennis</p>
<p><b>23</b> Battle of the Alamo</p> <p>111 9-10 am Low Impact Exercise                      104 8-1:30 Wood Shop                      106 1 pm Stained Glass                      208 1 pm Cards                      BC 6:30 pm Bocce                      106 7 pm Ceramics</p>	<p><b>24</b> National Chili Day</p> <p>111 9-10 am Low Impact Exercise                      104 8-1:30 Wood Shop                      Satl 9 am Social Tennis                      113 9:30-10:30 am Blood Pressure                      208 10:30 am Cards                      202 7-9 pm Pool Playing</p>	<p><b>25</b> National Pancake Day</p> <p>111 9-10 am Low Impact Exercise                      104 8-1:30 Wood Shop                      206 Noon Mah Jongg                      106 1 pm Stained Glass                      113 1-2 pm Yoga &amp; Chair Yoga                      202 1-3 pm Pool Playing                      208 7 pm Kalookie</p>	<p><b>26</b> National Pistachio Day</p> <p>Satl 9 am Social Tennis</p> <p><b>VOCAL TRASH</b></p> <p>8:00 PM - JBA                      \$10 Residents - \$17 Guests                      ID Required</p>
<div data-bbox="105 1648 446 1974" data-label="Image"> </div>	<div data-bbox="483 1638 841 1984" data-label="Image"> </div>	<div data-bbox="893 1638 1153 1984" data-label="Image"> </div>	<div data-bbox="1234 1638 1567 1984" data-label="Image"> </div>

**2022**

**M  
A  
R  
C  
H**



Flower Of The Month:  
**DAFFODIL**

<b>Sunday</b>	<b>Monday</b>	<b>Tuesday</b>
<p>PLEASE NOTE</p> <p>Since this calendar must be prepared weeks in advance, there may be last-minute changes. We suggest you verify dates on In-House Channel 901.</p> <p>Revised 01-05-2022</p>	<p><b>KEY TO LOCATIONS</b></p> <p><b>BC = Bocce Court</b>  <b>EXT = Outside of Lw</b>  <b>JBA = Auditorium</b>  <b>LIB = Library</b>  <b>SATL = Satellite</b>  <b>TO = Ticket Office</b></p>	<p><b>1</b> Mardi Gras</p> <p>111 9-10 am Low Impact Exercise            104 8-1:30 Wood Shop            Satl 9 am Social Tennis            JBA 11 am Women of LW, Inc            208 1 pm Cards</p>
<p><b>6</b> Namesake Day</p> <p>Satl 9 am Social Tennis</p> 	<p><b>7</b> National Cereal Day</p> <p>111 9-10 am Low Impact Exercise            104 8-1:30 Wood Shop            108 1 pm Sewing Circle            202 1-3 pm Pool Playing            208 7 pm Cards</p>	<p><b>8</b> National Proofreading Day</p> <p>111 9-10 am Low Impact Exercise            104 8-1:30 Wood Shop            Satl 9 am Social Tennis            208 1 pm Cards</p> <p><b>BULK PICKUP</b></p>
<p><b>13</b> Daylight Savings Time Begins</p> <p>Satl 9 am Social Tennis</p> 	<p><b>14</b> National Pi Day</p> <p>111 9-10 am Low Impact Exercise            104 8-1:30 Wood Shop            108 1 pm Sewing Circle            202 1-3 pm Pool Playing            208 7 pm Cards</p>	<p><b>15</b> Ides of March</p> <p>111 9-10 am Low Impact Exercise            104 8-1:30 Wood Shop            Satl 9 am Social Tennis            208 1 pm Cards</p>
<p><b>20</b> Spring Equinox</p> <p>Satl 9 am Social Tennis</p> 	<p><b>21</b> Credit Card Reduction Day</p> <p>111 9-10 am Low Impact Exercise            104 8-1:30 Wood Shop            108 1 pm Sewing Circle            202 1-3 pm Pool Playing            208 7 pm Cards</p>	<p><b>22</b> National Goof Off Day</p> <p>111 9-10 am Low Impact Exercise            104 8-1:30 Wood Shop            Satl 9 am Social Tennis            113 11 am Women of LW Bd Mtg            208 1 pm Cards</p>
<p><b>27</b> National "Joe" Day</p> <p>Satl 9 am Social Tennis</p> 	<p><b>28</b> Something on a Stick Day</p> <p>111 9-10 am Low Impact Exercise            104 8-1:30 Wood Shop            108 1 pm Sewing Circle            202 1-3 pm Pool Playing            208 7 pm Cards</p> <p><b>ELECTION OF SIX (6)            BOARD OF DIRECTOR            POSITIONS</b></p>	<p><b>29</b> Smoke and Mirrors Day</p> <p>111 9-10 am Low Impact Exercise            104 8-1:30 Wood Shop            Satl 9 am Social Tennis            208 1 pm Cards</p>

# ENTERTAINMENT



## VOCAL TRASH February 26, 2022

A unique musical experience incorporating singing, industrial-style drumming, comedy, and award-winning break dancing. Vocal Trash is an environmentally conscious production with urban flair. They bring audiences to their feet with energetic performances of pop hits including “I Gotta Feelin” and “Footloose.”



## JOHNNY ROGERS BAND March 19, 2022

The very best Buddy Holly tribute show in the world! And that’s just the beginning. Endorsed by the Holly family and Buddy’s guitarist, Tommy Allsup, Johnny also pays tribute to Elvis, Jerry Lee Lewis, Johnny Cash and many other Rock ‘n’ Roll and country music icons. It’s like a one-man Legends in Concert show with full band.

A proven crowd-favorite that will leave you begging for more.

### TICKET OFFICE



- The ticket office is open Monday through Friday, 9:30 AM to 11:30 AM.
- The ticket office is open the night of the show from 6:30 PM to 7:30 PM.
- Reserved seat tickets **MUST** be picked up the first week of ticket sales or they will go into “general” sales the following week.

## LIVE ENTERTAINMENT 2022

SHOW DATE	ENTERTAINMENT	TICKET SALES BEGIN
Feb. 26	<b>Vocal Trash</b> <i>Singing, comedy, breakdancing &amp; more</i>	Jan. 31
Mar. 19	<b>Johnny Rogers Trio</b> <i>Buddy Holly and Beyond</i>	Feb. 22
May 14	<b>Gary DeLena &amp; Diane DeNoble</b> <i>Singing, dancing, comedy</i>	May 02
Jun. 11	<b>Love is a Rose</b> <i>Music of Linda Ronstadt</i>	May 16
Oct. 15	<b>Motown Magic</b> <i>The Temptations, Marvin Gaye &amp; more</i>	Sep. 19
Nov. 19	<b>The Diamonds</b> <i>Big hits–Silhouettes, The Stroll and Little Darlin’</i>	Oct. 24

*\*Note: Reserved seat must be purchased the first week of ticket sales*

# TICKET OFFICE Procedure



- The ticket office is open Monday through Friday, 9:30 AM to 11:30 AM, usually the four weeks prior to the show.
- The ticket office is open the night of the show from 6:30 PM to 7:30 PM.
- Reserved seat tickets **MUST** be picked up the first week of ticket sales or they will go into "general" sales the following week.
- Attendees arriving after the show has begun @ 8 PM **MUST** sit in the back to not disturb others.
- You must show your Lauderdale West ID or some form of picture ID showing your Lauderdale West address to purchase tickets at the resident price of \$10.
- Guest tickets may be purchased for \$17 each.
- We cannot put any tickets aside. We cannot refund or resell tickets.
- Tickets may be purchased with check or money order **PREFERRED** - Cash will be accepted if check or money order is not available – No credit cards accepted.
- A resident may pick up their neighbor's tickets for them, with their neighbor's ID.
- Proper attire should be worn to the shows, no shorts, no hats.
- No cameras, picture taking, or videos are permitted from any seat.
- Please follow the rules and enjoy the shows!



## Don't miss out on all the fun at LW!

Make sure you get your tickets at the Clubhouse in advance of the event.

### February Events

- Feb 1 Women of Lauderdale West, Inc in JBA – 11:00 AM
- Feb 12 Mardi Gras Party in JBA – 8:00-11:30 PM
- Feb 15 Hadassah in JBA – 11:30 AM
- Feb 26 Live Show in JBA – **Vocal Trash** – 8:00 PM
- Feb 28 Ticket Office Open for March Show – 9:30-11:30 AM

### March Events

- Mar 1 Women of Lauderdale West, Inc in JBA – 11:00 AM
- Mar 15 Hadassah in JBA – 11:30 AM
- Mar 19 Live Show in JBA – **Johnny Rogers Trio** – 8:00 PM

### April Events

- Apr 5 Women of Lauderdale West, Inc in JBA – 11:00 AM
- Apr 19 Hadassah in JBA – 11:30 AM



## RESERVED

### SEATS ARE AVAILABLE FOR LIVE SHOWS

Reserved seating is available for Lauderdale West residents (2 per household) for the live shows. Check with staff in the ticket office to reserve specific seats for the shows. They will be able to identify which seats are available. You don't pay for the tickets until you pick them up for the show. No extra charge: they are the same low price of \$10 for residents. This allows you to have the same seats for all the great shows.

Reserved seat tickets must be picked up the first week of ticket sales for a show or they will be made available to the general public on a first come, first served basis.

Stop by the Ticket Office in the Clubhouse Main Lobby and pick out your seats.

**Reserved seats are renewed on an annual basis. Instructions will be sent to current reserved seat holders in July with a deadline of November 15, 2022 to renew.**



## HOW WE PASSED THE BUDGET IN PLANTATION

*By Nick Sortal, Plantation City Council, Twitter: @PlantationNick*

PDQ, a quick-service chicken finger restaurant, is coming to 10197 Cleary Blvd. The city council approved the site plan at a fall meeting. The restaurant will be in the Publix Promenade shopping center – the one where the Publix is in the process of a year-long reconstruction. PDQ, which has five sites already in Broward County, will have drive-through service and indoor dining. The opening day will likely be in summer of 2022.

Meanwhile, the council approved signage waivers for two stores going into the old Stein Mart area at 8101-8373 W. Sunrise Blvd. Ross and Five Below are likely to open in about nine months, officials said. Because the stores are located toward the back of a large strip mall (Jacaranda Plaza) larger signage was appropriate, the council reasoned.

### **Studying schools**

I floated a proposal during the Nov. 3 council meeting to move Plantation Middle School onto the campus of Plantation High, creating a Grade 6-12 campus. Since I began campaigning in 2018, I have heard multiple stories of residents north of Broward Boulevard either moving after the child finishes fifth grade or choosing to attend schools other than the one they are zoned for.

I cited benefits for forming such a campus and am asking for public input to see if that would regenerate enthusiasm for public middle school north of Broward Boulevard. While I believe this is a good idea, what matters most is what the public thinks.

If you have questions or thoughts, email me at [NSortal@Plantation.org](mailto:NSortal@Plantation.org). Note: The school board would make the final decision. I am just offering suggestions.

### **“The Seasoned Senior”**

“The Seasoned Senior,” a publication produced by our Parks and Recreation Department, lists all kinds of events for those 55-plus (geez, that includes me!). Among the regular events are bingo, movies, game time and healthy brain activities. Email [LReyes@Plantation.org](mailto:LReyes@Plantation.org) to get more notices and get on her mailing list.

### **Cleary Publix eyes April reopening**

I contacted those in charge of refurbishing my Publix on Cleary to see how long until I’m back “home.” Now, construction deadlines are fluid, and I’m not holding them to it. But it looks like April is a good bet.

### **New bridge proposal**

The city of Plantation is discussing a new bridge that could help relieve traffic in Midtown. The city has initiated a Project Development and Environment (PD&E) Study to evaluate conditions for a new bridge over the South Florida Water Management District (SFWMD) New River Canal between SR 84 and SW 17th Street.

City officials say the proposed bridge will provide the Plantation Midtown Development District with a direct connection to westbound SR 84, enabling new capacity to and from Midtown and improving traffic conditions along the University Drive and Pine Island Road corridors approaching I-595. In addition, the bridge will provide traffic congestion relief on Pine Island Road from Peters Road to the I-595 Interchange, University Drive from Peters Road to the I-595 Interchange and diverted traffic will be analyzed on Peters Road from Pine Island Road to University Drive and on 17th Street and 80th Terrace south of Peters Road.



# Keven Kane

3RD GENERATION  
HOME OWNER IN LAUDERDALE WEST  
with over 30 years experience in Real Estate



KevenSells@EnMarProductions.com

954 326 4178

No worries, when you allow me to list your Lauderdale West property for sale, my team and I will help you in ways you likely have not even imagined. Selling a home can be a stressful time, let us be there for you every step of the way. You have many REALTORS® to choose from.

Please allow me to put the full strength of my team to work for you in order to earn your confidence.

Let's talk.  
954 326 4178



**Need help moving?  
Need help preparing  
your home for market?**

List with me and my Team becomes **your team!**

**We do it all!**

*I work closely with the LW Association to ensure a speedy approval for the sale of your home*

VALID FOR THE LIMITED TIME ONLY

KEVEN'S LAUDERDALE WEST

# STIMULUS OFFER

List with Keven & get up to \$1000 worth of the following services FREE to prepare your home for sale!



GARDENING



PAINTING



DEEP CLEANING

WORK WITH MY TEAM AND KEEP MORE OF YOUR MONEY.



**CITY OF PLANTATION  
2022 CITY COUNCIL MEETINGS**


Plantation City Council meetings are usually held the 2nd and 4th Wednesday beginning at **6:00 PM** with a workshop followed by the meeting at **7:00 PM**. Periodically, meetings may be cancelled, or special meetings may be held. Please call the City Clerk's Office at City Hall to verify (954-797-2237).

**CITY COUNCIL MEETINGS**

**February 9, 2022  
February 23, 2022**

**March 9, 2022  
March 30, 2022**

Residents are asked, however not required, to wear masks when attending public meetings or hearings. Examples of public meetings include City Council meetings and Planning & Zoning Advisory Board meetings.



**FYI BY  
PLANTATION  
CODE**

You need a City of Plantation permit to make any plumbing or electrical changes. Don't forget you also need to complete the paperwork with our Director in charge of modifications, Kristi Woods. A permit ensures a plumbing or electrical change is done properly – to code. It is for your protection.



**Plantation, FL** – The 2021-22 Rock the Park Concert series are free, outdoor, live musical events held on the first Friday of every month, November through April. The events take place at Plantation Central Park's ball fields, located at 600 Central Park Drive. Each event features live music by a local band and food trucks. The trucks start serving at 6:00 p.m. and the music begins at 7:00 p.m.

Participants are encouraged to bring their blankets and/or lawn chairs to set on the lawn while they enjoy tunes outdoors. The line-up of bands is as follows:

Friday, February 4, 2022

**Southern Blood**  
(Southern Rock)

Friday, March 4, 2022

**Higher Ground**  
(Top 40/Dance/Rock)

Friday, April 1, 2022

**Havoc 305**  
(Premiere Top 40 Cover Band)

This is a great and fun outdoor event for residents and visitors to enjoy. For more information please call (954) 452-2510.



**A SPECIAL MESSAGE FROM THE  
PLANTATION POLICE DEPARTMENT**



The Plantation Police Department continues to inform us of incidents in our area where people have knocked on doors purporting to be various vendors seeking entry into our home. When allowed access to the home, they may rob the resident.

They have also informed us of the theft of items stored on patios. Please **DO NOT** leave valuable items outside. Make sure your home and vehicle are always locked. These are difficult times and we must be aware of our person, surroundings, and valuables.

**PLEASE DO NOT OPEN YOUR DOOR TO STRANGERS. AND CERTAINLY, DO NOT LET THEM INTO YOUR HOME. DO NOT LEAVE VALUABLES UNSECURED.**

# FEBRUARY IS HEART HEALTH MONTH

*Cary Blanchard, Ph. D.*

*Plantation Fire Department Battalion Chief*

Heart disease is one of the most widespread and complicated health challenges in the United States. Heart disease is responsible for about 1/3 of all deaths in the U.S. The best thing that anyone can do for their heart health is to see a doctor regularly, including a cardiologist. A doctor can identify heart conditions that may affect your health. In addition, there are things that you can do to prevent heart disease including diet, exercise, limiting alcohol, and quitting smoking.

According to National Today, the following are interesting facts about heart health (<https://nationaltoday.com/american-heart-month/>)

1. **Heart attacks can be silent** - One in five heart attacks occurs without the person even knowing they had one.
2. **Heart attacks affect women differently** - Women may experience different symptoms than men. These include pain in the back, arm, neck, or shoulder; nausea; fatigue; shortness of breath; and vomiting.
3. **Young women are at higher risk than men** - Women under the age of 50 are twice as likely to die of a heart attack as men in the same age group.
4. **Another reason to hate Mondays** - Heart attacks are more likely to occur on Monday mornings than other days of the week. Scientists attribute this to the disruption in our circadian rhythm over the weekend which leads to increased blood pressure and other changes to the nervous system.
5. **Diet soda raises heart attack risk** - If you drink one or more diet sodas a day, your chances of having a heart attack are 43% higher than those who drink regular soda or none at all.

Visit us at [www.plantation.org](http://www.plantation.org) or follow us on our social media platforms including Facebook, Instagram, Twitter and NextDoor.



LIC # 98-8905-AL

# WINDOWS



DEALER NETWORK  
CELEBRATING 51 YEARS OF  
PORCH ENCLOSURES.

## ACRYLIC & IMPACT Porch Enclosures

### Hurricane Shutters & Impact window Protection.





Call For Your Free Estimate Today

954-816-0900

www.JohnsonAluminumProducts.com

Serving All of Broward Including: Plantation / Sunrise Lakes / Century Village

SERVING OVER  
20,000 HAPPY  
CUSTOMERS IN  
BROWARD SINCE  
1965



# Call Us Today To Receive Your FREE Covid 19 Vaccination Card Holder

**COVID-19 VACCINATION CARD HOLDER**

*Courtesy of:*  
**Ralph & Mary Rickel**  
 RE/MAX Realty Associates  
 954.614.6371  
 Mary@RickelRealtors.com  
 Ralph@RickelRealtors.com





## We Are Lauderdale West Residents.



**Ralph & Mary Rickel**  
Associates

**RE/MAX Realty Associates**

**Mary Cell: 954.614.6370**

**Ralph Cell: 954.614.6371**

*Each office independently owned and operated.*



*Listed With Another Realtor? Please Disregard This Notice!*





Since 1980

# 24-HOUR EMERGENCY SAME DAY SERVICE

## PLUMBING EMERGENCY? DEPEND ON US!



**\$50 OFF**  
Clearing of Any Sink, Toilet or Sewer Drain

**\$85 OFF**  
Any Rheem Water Heater Installation

**\$45 OFF**  
Any Toilet Repair

**\$40 OFF**  
Any Garbage Disposal Installation



**Rheem**  
**100% FINANCING** on Rheem Water Heaters\*  
18 MONTHS SAME AS CASH

**WEST END PLUMBING**  
**954-741-5271**  
**WestEndPlumbing.com**

**WATER HEATERS STARTING AT \$12 PER MON.**

**Complete Plumbing Service & Repairs**  
Sewer & Drain Cleaning • Toilets  
Faucets & Sinks • Water Filters • Disposals  
Pipe Repair & Replacements • Water Heaters • Shower Pans

All discounts taken off the regular rate of work. Coupons and other specials cannot be combined. Must mention this ad at time of service.  
*\*If qualified for financing*

STATE LICENSED & INSURED • CFC1427334

# BEAT THE FLORIDA HEAT!

## A/C INSTALLATIONS, SERVICE & MAINTENANCE



**WE SERVICE ALL MAKES & MODELS**

- RUUD**
- American Standard
- Rheem
- Carrier
- Goodman
- TRANE
- Amana

**A/C CHECK-UP ONLY \$29.95**

- System Diagnostic
- Check Thermostat Operation
- Freon Level & Leak Check
- Up to 1 lb. R410A Freon (As Needed)
- Check Evaporator & Condenser Coils

**FREE**  
Estimate on Any New A/C Installation

**FREE**  
Service Call With Work Completed

**\$200 OFF**  
Any New Complete A/C System Installation

**\$25 OFF**  
Any Freon Re-Charge

**WEST END AIR CONDITIONING**  
**954-741-5271**  
**WestEndAir.com**

**100% FINANCING AVAILABLE\***  
ON NEW A/C UNITS

**Complete A/C Service & Repairs**  
New A/C Unit Installations • System Tune-Ups  
Drain Line & Pan Cleaning • Refrigerant Checks  
Condenser & Evaporator Coil Cleaning • A/C Filters

All discounts taken off the regular rate of work. Coupons and other specials cannot be combined. Must mention this ad at time of service.  
*\*If qualified for financing*

Licensed & Insured • CAC036868



8211 West Broward Blvd.  
Suite #PH1 - Fifth Floor  
Plantation, FL 33324

Tel: 954.577.9700  
Fax: 954.475.1897

Fax to 954-475-1897

Or email to

[customerservice@homeownercpa.solutions](mailto:customerservice@homeownercpa.solutions)

### Maintenance Fee Auto Debit Authorization

Association Name: \_\_\_\_\_

Name on Deed: \_\_\_\_\_

Property Address: \_\_\_\_\_

Mailing Address: \_\_\_\_\_

Name of Bank : \_\_\_\_\_

(US Bank Only)

Name on Bank Account: \_\_\_\_\_

Home Phone: \_\_\_\_\_ Daytime Phone: \_\_\_\_\_

Email Address: \_\_\_\_\_

I have included a **Blank Voided Check** and hereby authorize my financial institution to debit my account in the name of my Condominium or Homeowners Association. I understand the debit will appear on my bank statement under the description of **“Association Lock Box.”** between the 5<sup>th</sup> and the 10<sup>th</sup> day of each month, if a monthly assessment, or between the 5<sup>th</sup> and 10<sup>th</sup> day of the first month of the quarter, if a quarterly assessment. In addition, **I understand this auto debit will continue until I notify my association in writing 30 days prior to canceling or changing the bank account used for the auto debit.** I also give the association authority to change the auto debit, as maintenance fees are changed by the Board of Directors, in future years.

**PLEASE ATTACH A BLANK VOIDED CHECK TO THIS FORM**

Return this form by the 21st of the month PRIOR to start month.

Start Month & Year: \_\_\_\_\_

Assessment Frequency: \_\_\_\_ Monthly

Maintenance Fee: \$ \_\_\_\_\_ Special Assessment: \$ \_\_\_\_\_ Other \$ \_\_\_\_\_

Describe: \_\_\_\_\_

You will be sent a letter confirming the month EFT will start.

#### ACCOUNT MUST BE CURRENT PRIOR TO START MONTH



Initial box

I authorize a one-time payment in the amount of \$ \_\_\_\_\_ to bring my account current as of \_\_\_\_\_ (Date)

**PLEASE RETAIN A COPY OF THIS FORM FOR YOUR RECORDS**

Signature: \_\_\_\_\_ Date: \_\_\_\_\_

You may email this form to [customerservice@homeownercpa.solutions](mailto:customerservice@homeownercpa.solutions) or for secured delivery Fax to 954-475-1897

# Puzzles & Quizzes

Answers, page 39

## ACROSS

- 1) Swap
- 6) Ancient calculators
- 11) Baby that barks
- 14) Lots of land
- 15) Man-made fiber
- 16) Santa \_\_\_\_, Calif.
- 17) Indy 500 leaders
- 19) Sleet-covered
- 20) "\_\_\_\_ porridge hot ..."
- 21) Bring under control
- 23) Trees with quaking leaves
- 26) Legendary actress Holm
- 27) Meeting with a medium
- 28) Holder of baby's milk
- 29) Attack, to a dog
- 30) Baylor of basketball fame
- 32) Begot
- 35) Looped cross
- 37) Japanese rice wines
- 39) "As \_\_\_\_" (letter closing)
- 40) Arizona flat tops
- 42) Place of pilgrimage, for some
- 44) English 101 verb
- 45) More creative, perhaps
- 47) Abdominal protrusion
- 49) Disheartens
- 51) Author
- 52) Natural, hairwise
- 53) Newton of science
- 55) Shutout score, in soccer
- 56) It's undone for change?
- 61) Part of SUV, briefly
- 62) French school
- 63) Over, as a meal
- 64) Faux \_\_\_\_ (public misstep)
- 65) Impede the progress of
- 66) Ice cream serving

## DOWN

- 1) Spigot
- 2) Old electronics company
- 3) Line made with a compass
- 4) Extend farther down
- 5) True nature
- 6) They might be liberal
- 7) Make less intense
- 8) "Sure thing, skipper!"
- 9) Outmoded women's garment
- 10) "Yo mama" jokes, essentially
- 11) Professional butler, for one
- 12) Whole, as a film
- 13) Check casher
- 18) Art-studio stands
- 22) Be in contradiction with
- 23) Black tea from India
- 24) Catcher in the Rhine?
- 25) Burdens for Grand Canyon mules
- 26) Like a dunce cap
- 28) Man on a "hog"
- 31) Arcade attractions
- 33) Creepy and supernatural
- 34) Dismal, to a bard
- 36) Built to take it
- 38) Unstressed vowel sounds
- 41) Prepared tea, in a way
- 43) Pumps full of bubbles
- 46) Bring on, as labor
- 48) Zigzag braid on clothing (Var.)
- 49) Time to rise, for some
- 50) "West Side Story" girl
- 53) Sea-girt land
- 54) Tarot reader, supposedly
- 57) Decay
- 58) "What was \_\_\_\_ think?"
- 59) Keanu in "The Matrix"
- 60) A country's output, for short

**P.S.**

By Timothy E. Parker

1	2	3	4	5		6	7	8	9	10		11	12	13
14						15						16		
17						18						19		
			20						21		22			
23	24	25							26					
27								28						
29					30		31				32		33	34
35			36			37				38		39		
40					41		42				43		44	
			45			46				47		48		
49	50									51				
52								53	54					
55					56		57					58	59	60
61					62						63			
64					65						66			

*Sudoku (answers page 39)*

2			7			8
7					1	4
		1	9	3		6
3						8 1
					7	
		7		5		
				9		
8		9				2 3
			7	6		

**WONDERWORD** By DAVID OUELLET

**HOW TO PLAY:** First, read the list of words, then look at the puzzle. The words are found in all directions - vertically, horizontally, diagonally, backward. Circle each letter of a word found and strike it off the list. The letters are often used more than once so do not cross them out. It is best to find the big words first. When you find all the words listed in the clues you'll have a number of letters left over that spell out the WONDERWORD. To see the answer use the link below the puzzle.

**How Sweet It Is** November 22, 2021

E	S	S	S	H	T	R	S	F	S	T	E	E	T	H
R	K	M	T	M	S	W	A	I	E	S	G	A	B	O
G	A	A	A	R	E	E	S	G	C	D	U	L	M	N
Y	N	P	C	E	A	T	R	S	U	C	I	N	I	E
S	L	I	T	T	R	T	A	F	A	S	A	E	N	Y
E	E	S	N	E	R	C	F	L	S	P	Y	T	T	F
S	E	I	S	E	C	O	O	I	O	M	I	R	S	S
Z	U	S	R	A	T	R	H	L	L	C	O	E	U	I
C	E	O	K	T	I	T	E	S	I	L	O	C	S	P
D	A	E	I	E	S	O	A	N	E	N	I	H	H	S
Y	S	R	S	C	N	A	G	F	O	P	W	N	C	A
A	C	A	A	S	I	I	P	U	D	D	I	N	G	S
R	E	N	R	M	F	L	G	F	Y	L	K	C	I	S
T	D	A	A	T	E	A	E	C	O	O	K	I	E	S
Y	B	L	E	F	T	L	S	D	B	A	T	T	E	R

Bags, Bars, Batter, Bliss, Cakes, Calories, Candy, Caramel, Chocolate, Cookies, Creams, Delicious, Desserts, Diets, Enticing, Fancy, Fattening, Figs, Fillings, Fresh, Gift, Honey, Kiwi, Maple, Mints, Mocha, Napoleons, Nougat, Pastries, Pies, Puddings, Recipes, Sauces, Shortcake, Sickly, Sips, Sugar, Sweets, Syrup, Tarts, Tease, Teeth, Tray, Yams, Zest.

*Puzzle answer, page 39* Solution: 8 letters

*Simply the best Handyman Services Inc.*  
 (servicing Lauderdale West since 1999)



Handyman Licence # 165011

**Just call Kenny**  
**PHONE: (954)-655-7061**

**Alexis Simply Clean**  
*Simply professional... Simply Honest... Simply Affordable...*



Alexis Hopkins  
 Owner|Operator  
 (954)600-5173

[www.alexissimplyclean.com](http://www.alexissimplyclean.com)



**TERESA DURANTE**  
**REALTOR**

**30 YEARS OF EXPERIENCE**  
**IN SOUTH FLORIDA**

**CELL: 305-202-1999**

**I AM A RESIDENT OF LAUDERDALE WEST**  
**TAMBIÉN HABLO ESPAÑOL**

**UNITED REALTY GROUP**

1361 SAWGRASS CORPORATE PKWY  
 SUITE 300 SUNRISE, FL 33323

**TERESADURANTE@HOTMAIL.COM**

***Dare to Dream...***  
 TURNING YOUR DREAMS  
 INTO "REALTY" FOR 34 YEARS!

**THE**  
**ABRAHAM**  
**TEAM**  
 954.802.0444

***WE KNOW YOUR MARKET!***  
***WE KNOW YOUR MODEL!***  
***BECAUSE WE LIVE HERE!***

ASK THE EXPERTS IN LAUDERDALE WEST  
 CALL HARVEY & CHARLOTTE NOW!  
**954-802-0444**

***Don't Make a Move Without Us!***



**kw**  
 KELLER WILLIAMS LEGACY  
Each office is independently owned and operated.

**Harvey & Charlotte Abraham**

# Puzzles & Quizzes Answers

Sudoku answer to puzzle on page 37

2	5	6	4	7	1	3	9	8
7	9	3	8	6	5	1	2	4
4	8	1	9	2	3	5	7	6
3	2	5	6	4	7	9	8	1
6	4	8	1	3	9	7	5	2
9	1	7	2	5	8	6	4	3
1	7	4	3	9	2	8	6	5
8	6	9	5	1	4	2	3	7
5	3	2	7	8	6	4	1	9

Crossword answer to puzzle on page 36

1	T	R	A	D	E	6	A	B	A	C	I	11	P	U	P	
14	A	C	R	E	S	15	R	A	Y	O	N	16	A	N	A	
17	P	A	C	E	S	18	E	T	T	E	R	S	19	I	C	Y
20	P	E	A	S	E	21	S	U	B	D	U	E				
23	A	S	P	E	N	S	26	C	E	L	E	S	T	E		
27	S	E	A	N	C	E	28	B	O	T	T	L	E			
29	S	I	C	30	E	L	G	I	N	32	S	I	R	E	D	
35	A	N	K	H	36	S	A	K	I	S	38	E	V	E	R	
40	M	E	S	A	S	41	M	E	C	C	A	43	A	R	E	
45	A	R	T	I	E	46	H	E	R	N	I	A				
49	S	A	D	D	E	N	S	51	W	R	I	T	E	R		
52	U	N	D	Y	E	D	53	I	S	A	A	C				
55	N	I	L	56	P	U	R	S	E	S	T	R	I	N	G	
61	U	T	E	62	E	C	O	L	E	63	E	A	T	E	N	
64	P	A	S	65	D	E	T	E	R	66	S	C	O	O	P	

Wonderword Answer: **TRUFFLES** (Puzzle on page 37)



## APPLIANCE REPAIRS



### TECHNICIANS APPLIANCE GROUP, LLC.

Over 30 Years of Experience in Appliance Service

Servicing all appliance brands, Air Conditioning, Light Plumbing and Electrical.  
 Serviced Lauderdale West for over 15 years while working for Century Service and still servicing Lauderdale West area and Plantation area.

**CALL JOSE RODRIGUEZ FOR SERVICE TODAY!**

**786-325-3983 \* 305-492-9110**

**Techappliancegroup@gmail.com**

HOME INSPECTION REPORT

OWNER: \_\_\_\_\_ UNIT # \_\_\_\_\_ DATE: \_\_\_\_\_

ADDRESS: \_\_\_\_\_ PURPOSE: \_\_\_\_\_

STRUCTURAL/HARDSCAPING:

- \_\_\_\_\_ AWNINGS REPAIR \_\_\_\_\_ CLEAN \_\_\_\_\_ PRIME/PAINT \_\_\_\_\_ MUST BE IN OPEN POSITION \_\_\_\_\_
- \_\_\_\_\_ GUTTERS REPAIR \_\_\_\_\_ CLEANOUT \_\_\_\_\_ REMOVE PLANTS \_\_\_\_\_ REMOVE DOWNSPOUT \_\_\_\_\_
- \_\_\_\_\_ FRONT PORCH REPAIR \_\_\_\_\_ POWERWASH \_\_\_\_\_ PAINT \_\_\_\_\_ REMOVE CLUTTER/STORAGE/POTS \_\_\_\_\_
- \_\_\_\_\_ BACK PATIO REPAIR \_\_\_\_\_ POWERWASH \_\_\_\_\_ PAINT \_\_\_\_\_ REMOVE CLUTTER/STORAGE/POTS \_\_\_\_\_
- \_\_\_\_\_ SIDE WALKWAY REPAIR \_\_\_\_\_ POWERWASH \_\_\_\_\_ PAINT \_\_\_\_\_ REMOVE CLUTTER/STORAGE/POTS \_\_\_\_\_
- \_\_\_\_\_ MAILBOX REPAIR \_\_\_\_\_ CLEAN \_\_\_\_\_ MAILBOXES MUST BE WHITE \_\_\_\_\_
- \_\_\_\_\_ WINDOWS REPAIR \_\_\_\_\_ CLEAN \_\_\_\_\_ REMOVE SIGNS \_\_\_\_\_

LANDSCAPING:

- \_\_\_\_\_ REMOVE
  - \_\_\_\_\_ PLANTS IN COMMON AREA
  - \_\_\_\_\_ ROCKS/STONES/PAVERS
  - \_\_\_\_\_ PLANTS FROM AROUND/ON TREE \_\_\_\_\_ LIGHT POLE \_\_\_\_\_ MAILBOX \_\_\_\_\_
  - \_\_\_\_\_ TREES/STUMPS/ROOTS
  - \_\_\_\_\_ CLUTTER/STORAGE IN PLANTING BED
  - \_\_\_\_\_ WALKWAY LIGHTS
  - \_\_\_\_\_ EXCESSIVE (MORE THAN 10) POTTED PLANTS OR EMPTY POTS
  - \_\_\_\_\_ PLANTING BED BEYOND THREE FEET
  - \_\_\_\_\_ PLANTING BED TOO CLOSE TO HOUSE
  - \_\_\_\_\_ POTS MUST BE MOVABLE DURING HURRICANE
  - \_\_\_\_\_ EMPTY POTS
- \_\_\_\_\_ TRIM
  - \_\_\_\_\_ ALL FRONT BUSHES TO MAXIMUM HEIGHT OF 4 FEET
  - \_\_\_\_\_ ALL SIDE BUSHES MAXIMUM HEIGHT 4 FEET
  - \_\_\_\_\_ ALL BACK PATIO BUSHES MAXIMUM HEIGHT 5 FEET
  - \_\_\_\_\_ ALL CORNER BUSHES TO MAXIMUM HEIGHT 5 FEET
- \_\_\_\_\_ MAINTAIN
  - \_\_\_\_\_ WEED FLOWER BED
  - \_\_\_\_\_ INSTALL BORDER AROUND FLOWER BED
  - \_\_\_\_\_ REPAIR/POWERWASH BORDER
  - \_\_\_\_\_ INSTALL MULCH

1. THE ASSOCIATION ASSUMES NO RESPONSIBILITY AND/OR REPAIR OF ANY ALTERATIONS, IMPROVEMENTS OR MODIFICATIONS.
2. HOMEOWNERS ARE RESPONSIBLE FOR THE EXTERIOR MAINTENANCE OF THEIR HOME WHICH INCLUDES ALL OF THE ABOVE AS WELL AS DECORATIONS AND FURNITURE.
3. ALL PLANTINGS MUST HAVE WRITTEN BOARD APPROVAL.
4. PLEASE NOTE: "PLANTINGS WILL BE REMOVED AT OWNER'S EXPENSE AFTER 14 DAYS NOTICE" FAILURE TO COMPLETE THE WORK IS A VIOLATION OF OUR ASSOCIATION DOCUMENTS AND MAY RESULT IN A FINE.

DATE: \_\_\_\_\_ NEEDS WORK: YES ( ) NO ( ) DATE: \_\_\_\_\_ REINSPECTION WORK COMPLETED: \_\_\_\_\_





### **DOES MY HOMESTEAD EXEMPTION AUTOMATICALLY RENEW?**

After your initial application for Homestead Exemption has been approved, it automatically renews each year unless there is a change of ownership or eligible use of your homesteaded property. Each January, our office mails a Homestead Renewal Notice and "Change Card" to all Homesteaded properties. Florida law requires the property owner to notify the Property Appraiser of any change which may affect homestead eligibility. This Change Order Card provides an efficient way to communicate these important changes to our office.

If there are NO changes to the use and/or ownership of your property, simply keep the card as your receipt verifying that your Homestead Exemption has automatically renewed for another year. However, if there are changes, please mark the Change Card accordingly and return it to our office.

If your name is not printed above the mailing address section on this card, it means you are not protected by Homestead Exemption at this property. You may be on title to the property, but you are not receiving Homestead Exemption. If you are eligible for Homestead Exemption on this property, you must complete your own Homestead Exemption application. You can apply online at <https://web.bcpa.net/bcpaclient/#/HomesteadExemption>

If you are a co-owner, surviving spouse, trust beneficiary or otherwise believe you are entitled to this exemption, you must file your own Homestead Exemption application to receive the benefit. If you have any questions relating to the death of the owner, the Change Card or need assistance in filing for Homestead or other tax-saving exemptions, please visit our website at [web.bcpa.net](http://web.bcpa.net) or contact our Customer Service Department at 954-357-6830.

If my office can ever be of assistance to you, please do not hesitate to contact me directly at [martykiar@bcpa.net](mailto:martykiar@bcpa.net).

Take care,  
Marty Kiar, CFA  
Broward County Property Appraiser



## ***Friends and Constituents***

As Committee Weeks ended and we look to the 2022 Legislative Session, my team and I wanted to send our best wishes to you and your family and bring an update from Tallahassee. Below, are legislative updates on some of the bills I will be sponsoring this Session, and important community announcements:

### **HB 13 Property Tax Exemptions For Widows, Widowers, Blind Persons, or Persons Totally and Permanently Disabled**

This bill increases the property tax exemption for residents who are widows, widowers, blind, or totally and permanently disabled. Currently, there is a \$500 exemption and this legislation would raise this exemption to \$5,000. Those who have lost loved ones or are disabled are already facing financial hardship. This bill will help alleviate some of that burden.

### **HB 265 Value of Motor Vehicles Exempt From Legal Process**

This bill revises the upward value of a motor vehicle owned that is exempt from legal process in bankruptcy cases to adjust for current vehicle values.

Currently, the Florida Bankruptcy statute allows for the repossession of a vehicle if the value is greater than \$1000 in bankruptcy filings. This exemption would allow those facing bankruptcy to keep their vehicle if it is valued below \$5,000. These changes would help ease the burden of bankruptcy and help those struggling to get back on their feet.

# THINKING OF SELLING?

*Tami Stogner-Realtor*



LLINAS REALTY GROUP, INC.

Let Me \$ave You \$\$\$!

**Call, Text, or Email anytime!**

**954-770-7506**

**[tamistg@bellsouth.net](mailto:tamistg@bellsouth.net)**

- Full Service Realtor with "NEGOTIABLE" Commissions
- Providing 25+ years of Real Estate Excellence
- The most up-to-date marketing technology
- My goal is to get the highest price for your property!

**Llinas Realty Group, Inc.**

Flexible Commissions, Professional Service

Tami Stogner

Realtor

954 770-7506

10736 Charleston Place  
Cooper City, Florida 33026

[tamistg@bellsouth.net](mailto:tamistg@bellsouth.net)  
Call, Text or Email anytime



**CHECK OUT MY REVIEWS ON ZILLOW.COM  
REFERENCES AVAILABLE UPON REQUEST.**

**Landlords:**

- Landlords are responsible for the upkeep of their property.
- The Association will no longer accept service requests from tenants.
- Landlords must contact the Maintenance Department for all service requests for their property.
- Please advise your tenants that they must contact you and you will contact the Maintenance Department.

Thank you for your cooperation.  
Jennie Lipari, President

**IMPORTANT NOTICE  
LW LANDSCAPING MAINTENANCE**

We continue to deal with old and overgrown plantings on common areas that were installed by homeowners without written Board approval and have not been maintained regularly. We are removing these plantings because they are in the pathway of the mowers and interfere with proper lawn maintenance such as fumigation, fertilization, irrigation, and grass trimming. These overgrown plantings on the common area provide a haven for snakes, rats and racoons which can pose danger in our Community. To replace these plantings, we plan to install smaller flowering trees which will not pose a hazard during storms.

*If you have written approval for these plantings, please contact the Board immediately to avoid removal of your plantings. This is the only notice you will receive before plantings are removed.*

LW Board of Directors

**PHYSICAL & OCCUPATIONAL THERAPY**

Are You Suffering From Back Pain, Poor Balance, Weakness?



We offer Ultrasound, Massage, Balance & Vestibular Therapy  
Cardiac, Neurological and Senior Rehab  
Exclusive 1 on 1, In the Comfort of your Home  
Protective Equipment Protocols

**THERAPY IN YOUR HOME**

Licensed Medicare Provider FL8318

Brian Caits @ 954-328-1505

**LECTRA-FAST**

**ELECTRICAL SERVICES INC.**

**(954) 689-8998**

**EC#13002335**



**ROBERT'S BARBER SHOP**  
Traditional • Old Fashion  
Men's & Boys Hair Styling  
Since 1995

- Scissor Cuts
- Layer Cuts
- Razor Cuts
- Flat Tops
- Fades
- Hot Shaves
- Beard Trim
- Ladies Cuts

*We speak English, Italian & Spanish*  
Appointments Suggested  
**954-746-8886**  
2692 N. University Dr.  
Sunrise, FL 33322

Oakland Pl. Blvd.	Next to Kings Head Pub ★	Sunset	Sunrise Blvd.
	University Dr.		



# Safe, Compassionate & Dependable IN-HOME CARE

## Taking care of all your needs.

ALL COVID-19 PRECAUTIONS TAKEN

Hourly • Daily  
Weekly • Overnight

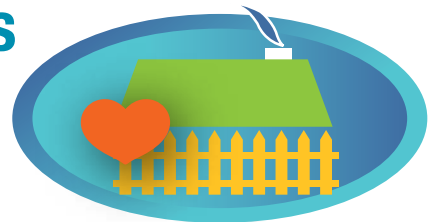
- Daily Tasks • Transportation • Cleaning & Laundry
- Meal Prep • Shopping • Appointments & Errands
- Companionship • Medication Reminders
- Overnight Attendant Care
- & Much More!



### What our clients are saying ...

I cannot find the words to say how wonderful **IDS IN HOME CARE**. The caregiver's service to my mother has been outstanding. The personal, on-hands service was extraordinary.  
**Paula K.**

I live in Michigan. **IDS IN HOME CARE** provided such excellent service for my father who lives in Florida. I highly recommend IDS. IDS gave such personal attention to my father's needs, almost like family.  
**Bob H.**



# IDS

INDEPENDENCE,  
DIGNITY & SECURITY

---

## IN-HOME CARE



# 954.476.5353

8201 Peters Rd. • Ste 1000 • Plantation FL 33324



Insurance & Private Pay Accepted

[www.IDSInHomeCare.com](http://www.IDSInHomeCare.com)

Licensed & Insured  
HCS232941 & NR302-11726

# BE AWARE BE PREPARED

For your personal safety in Lauderdale West and wherever you may travel, you must be aware of your surroundings and follow the guidelines below.

- Never open your door to anyone you do not know or did not invite.
- Double check with the utility company if a worker just knocks on your door. Call the company to verify the work order for your home (FPL, Plantation Utilities, Blue Stream, etc.).
- ALWAYS lock the doors to your home and your vehicle.
- Do not give anyone your personal information, especially your social security number, bank account information, birth date.
- Do not walk alone - use the buddy system and walk during daylight hours.
- Post your NO SOLICITATION sign and do not be afraid to call the Police non-emergency number (954-797-2100). It is always better to be safe than sorry.
- The Lauderdale West Maintenance team all wear Lauderdale West shirts. They DO NOT wear a vest.

**FOR YOUR SAFETY, PLEASE DO NOT OPEN YOUR DOOR TO ANYONE YOU DO NOT KNOW.**

## MOVING SALE *protocol*

If you have sold your house in Lauderdale West and will be moving out, you may hold a one-day sale provided you receive permission from the Board President. Should you not get permission, you will be asked to shut the sale down immediately.

Please remember, you may not place any signs on Lauderdale West property. Thank you for your cooperation and best of luck in your new home.

### **NEEDLE DISPOSAL**

Used needles must be placed into a Sharps container. A Sharps container can be purchased for minimal cost at:

- Prescription Pad Pharmacy, 333 NW 70th Avenue, Ste 102, Plantation - 954-791-2000

Once the container is full, it can be dropped off at this pharmacy and a new container obtained.



# FLORIDA SHUTTER FACTORY, INC

*Protection is Not a Luxury it's a Necessity!*

Custom Manufacturing • Professional Installation

- Accordions • Roll-Ups • Panels • Bahamas



 BUY FACTORY DIRECT & SAVE

 NOW OFFERING **NO CONTACT** ESTIMATES, INSTALLATION AND SERVICE.

 WE SELL THE TIGHTEST STACKING ACCORDION SHUTTER IN THE INDUSTRY!

**CALL**  
For Your  
**FREE ESTIMATE**  
**954.687.4793**  
[WWW.FLSHUTTERFACTORY.COM](http://WWW.FLSHUTTERFACTORY.COM)





PREMIER RESIDENCES  
OF PLANTATION

A FIVE STAR SENIOR LIVING COMMUNITY

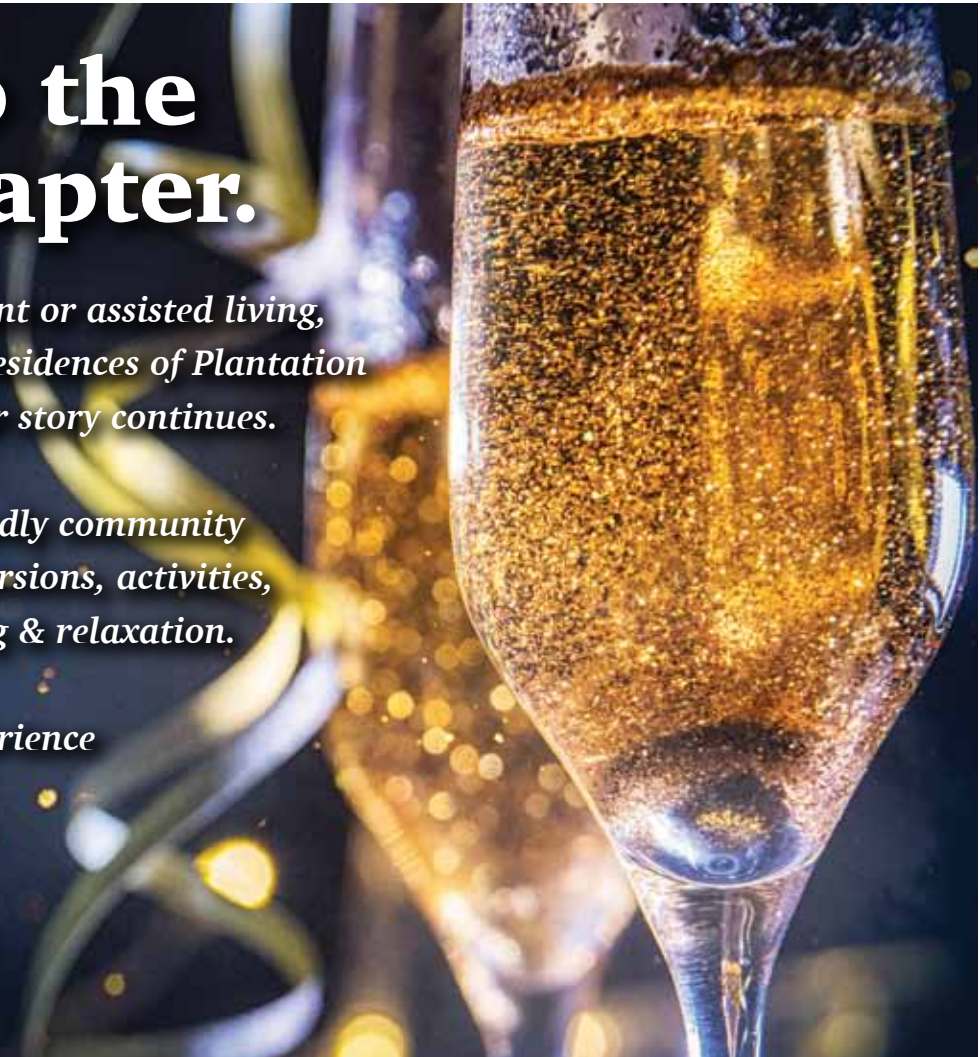


# Toast to the next chapter.

*Whether it's independent or assisted living, let Five Star Premier Residences of Plantation be the place where your story continues.*

*Enjoy a beautiful, friendly community filled with classes, excursions, activities, 5-Star Signature dining & relaxation.*

*Come see why our experience makes the difference.*



## The best place to be right now!

- Spacious rental apartments with no buy-in
- Wellness center and 24-hour nursing available
- Live entertainment, sports lounge and big-screen TV

- Washer/dryer in every apartment
- Chef-created gourmet dining
- Beautiful courtyard and heated pool
- Art studio, cinema room, fitness center and salon
- Chauffeured transportation



Assisted Living Facility #7340



Find us on Facebook

8500 W Sunrise Blvd, Plantation, FL 33322  
[www.FiveStarPremier-Plantation.com](http://www.FiveStarPremier-Plantation.com)

**CALL ABOUT OUR 2022  
MOVE-IN SPECIALS!  
(954) 289-5646**

# Howard Helps "Lauderdale West" Dreams Come True!

Living in Plantation over 42 years and serving Lauderdale West



## 954 - 647 - 9254

Ceil Brown Realty

[howardwinter@comcast.net](mailto:howardwinter@comcast.net)

<http://howardwinter.matrix.southfloridaml.com>



**Howard Winter**  
Realtor

### SINGLE FAMILY HOMES

- \*LAKEVIEW - 2 BEDROOM / 2 BATH/ GARAGE --- Water view, Split bedroom floor plan \$320,000
- \*ADMIRAL - 2 BEDROOM /2 BATH/ GARAGE --- Updated, open floor plan, Hurricane protection. \$289,000

### DUPLEX / 4-PLEX

- \*4-PLEX - 1 BEDROOM / 2 BATH --- Updated, Granite kitchen counter tops, Full size washer/dryer \$165,900
- \*DUPLEX - 2 BEDROOM /2 BATH ---COMING SOON!!!! Updated, Private entrance \$200,000

**EACH UNIT HAS MANY MORE FEATURES CALL FOR MORE INFO.  
MANY MORE UNITS ALSO FOR SALE....**

**ADDRESS CORRECTION REQUESTED**

# Prestige Impact Windows & Doors

A DBA of Prestige Construction Engineering Group, LLC



**Prestige**  
Construction Engineering Group LLC  
CGC-1516472 / CA-31258

1931 NW 150 Ave., Suite 208  
Pembroke Pines, FL 33028  
**954-961-5300**



**100%  
Financing  
Available!**

5% Discount with  
complete windows  
& doors replacement  
project!

Structural issues with your family  
room or den? **We can Help!**



**Free Engineering Plans with all Project by Prestige**

Lauderdale West References Available!

**954-961-5300**

[info@prestigeceng.com](mailto:info@prestigeceng.com)

CGC-1516472 / CA-31258